



Northwest Designer Craftsmen

www.nwdesignercraftsmen.org/

Facebook: <https://www.facebook.com/pages/Northwest-Designer-Craftsmen-NWDC/355877767779930?sk=wall>

NWDC online calendar: <http://www.nwdc-online.org/calendar/>

Members' Only Site <https://sites.google.com/site/nwdesignercraftsmen/home>

Meetings and Speakers



Phinney Neighborhood Center Program:

2nd Wed. of the month

Board meetings 5:30-7 (open to everyone)

Speaker 7-8 pm / Social Time 8-9 pm

Phinney Neighborhood Center location:

6532 Phinney Ave N, Seattle, WA 98103, in the lower (east) building basement

September 7

David French.

October 12

Loren Lukens.

November 9

Cappy Thompson.

Our September Presenter will be David French



David French received a BFA from Atlanta College of Art in 1983. In the late 1980s he began making and painting wood sculpture while living in Berlin, Germany. Since moving to Seattle in 1991, he has continued his artistic exploration, straddling a line between painting and sculpture. His work has been exhibited regionally and nationally. A recipient of an NEA grant for sculpture from Western States Arts Federation, David has also been awarded fellowships at Vermont Studio Center and a senior residency at Oregon College of Art and Craft. His work has been reviewed in Art in America, Sculpture Magazine, and American Craft, among other publications. In Seattle, David is represented by Patricia Rovzar Gallery.

Basketry with a Trio of Teachers

October 22-23, 2016

Basketmakers Polly Adams Sutton, Marilyn Moore and Katherine Lewis
offer a selection of classes in the Mount Baker Neighborhood of Seattle

Saturday Classes:

Sweet Split Cedar with Polly Adams Sutton

Using the natural thickness of western red cedar bark, this basket will begin with a twill base. The spokes will be split and then twined with mellowed NW sweetgrass, creating patterns with the inner and outer walls or cedar. Two folded borders finish the piece.



A Little Twist with Marilyn Moore

There is something magical about baskets and this one is no exception. Learn to blend color by using copper strips and copper wire for spokes and fine colored wire as a twining material. The basket makes a "little twist" as new spokes are added. A basket that will capture your imagination and bring a little of that magic into your life.

Sunday Classes:

Caned Cedar with Polly Adams Sutton

This cedar basket is created with a series of X's. The basket is woven simultaneously with waxed linen and dyed sadori cane. If you are new to basketry, this little basket is a good one to learn twining and a basic twill base.



Mini Posey Basket with Marilyn Moore

This sweet little basket is perfect for you to imagine gathering the first flowers of spring. Explore twining with fine wire, blending color and then making a handle, to turn this into the basket in your dreams of spring.

Saturday/Sunday Class:

Willow Shopping Basket with Katherine Lewis

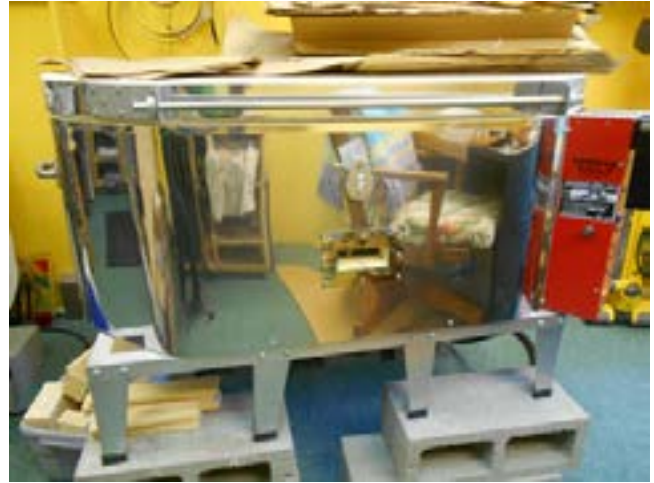
Sorry, class full



All classes will be held in the community room at the Mount Baker Neighborhood Center for the Arts, 2915 Rainier Ave S., Seattle WA, next door to the Mt. Baker Light Rail station.

For more information or how to register, contact Polly at pollysutton@hotmail.com or Katherine at willowbasketmaker@gmail.com

Kilns For Sale



1. Olympic Champ XL electric kiln with shelf kit 120V, 15 amp Bartlett Model 3 Key controller
14.5 x 14.5 x 6" deep inside 1700 degrees F max. on tall stand Excellent shape – like new! \$1025
new, asking \$770.

110/120 Volt Kilns are compact, multi-purpose kilns for firing jewelry, enamels, dolls, glass and ceramics. Glass kilns are used for fusing and forming of glass shapes. Olympic's glass fusing kilns have both lid and body elements. Elements in the firing chamber are used to evenly heat the glass piece and the lid element is used when fusing temperature is reached. Each of Olympic's glass kilns comes standard with the RTC-1000 controller that allows you to store 2 additional programs for firing. Each kiln comes with the stand shown, instruction manual. Options include Quartz Porthole, a Punty (Bead) Door, and Shelf Kit.

2. EvenHeat Model RM11 Kiln with split shelf 240v, 40 amp Rampmaster II controller sits on floor
with concrete blocks 40 x 25 x 13" inside 1800 degrees F max. Excellent shape – like new! \$5430 new,
asking \$4075.

The Studio Pro 41 offers artists, studios and production operations true, large scale firing potential. Designed specifically for easy access and glass placement, the Studio Pro 41 allows the artist the opportunity to create full works without compromise. Features include Rampmaster controls, front and top access, Swing View pivoting control enclosure, thoughtful handles, lift assisted opening and a seamless shelf which offers 884 sq. inches of usable firing surface.

The kilns reside in Shelter Bay, near La Conner, WA, just half way between Seattle and Bellingham. Assistance with delivery is available. For more information, please contact Lin McJunkin 360-941-6742 or lin@mcjunkinglass.com.

Following is the obituary for a very dear member Carolyn Anne Price-Dyer. She had been a part of our organization since 1994. Carolyn was a creative, kind, and generous woman that made new members, like myself and others, feel very welcome to the organization. She produced joyful work for many NWDC shows. We were fortunate to have her in our company. Denise Snyder, Editor

CAROLYN ANNE PRICE-DYER

1931-2016

Carolyn Anne Price Dyer passed away peacefully at the age of 84 on the morning of Tuesday, May 31, 2016 in Santa Cruz, California. Born December 19, 1931 in Seattle, Washington, she was the oldest of three children to Herbert Fredrick B. Price and Evelyn Ida Nelson. Her brother, Robert, preceded her in death in 1982. She is survived by her brother James and both brother's families. She is also survived by her three sons: Philip, Paul and Andrew, and their families.

After graduating in 1949 from West Seattle High School, Carolyn attended University of Washington and graduated with a BA in Fine Arts. She was affiliated with Sigma Kappa. Carolyn then earned her Masters in Art History at Mills College in Oakland, California. In September 1954 Carolyn was married to Melburn Clark Dyer Jr. who preceded her in death in 2014.

LIFE AS AN ARTIST

Carolyn was gifted with the spirit of creative adventure and dedicated her life to enriching the world through her visual creativity in tapestry design and weaving. She shared this passion not only through weaving, but as a teacher, writer, painter, docent, exhibitor, gallery manager and photographer.

As a gallery manager:

- * Founder / owner of the Stone Court Gallery, the first commercial gallery in central Washington. (1958-64)*
- * Mills College Gallery (1953-55)*
- * Seattle Art Museum (1953)*
- * Gallery 8, Pasadena , CA (1977-78)*

As a writer, editor and critic:

- * Fiber Arts Magazine 1980-1990*
- * HALI (London)*
- * American Craft (New York, NY)*
- * Visual Dialog (Los Altos, CA)*
- * Follies (Pasadena, CA)*
- * Artifacts (Pasadena, CA)*
- * Artweek (San Jose, CA)*
- * San Marino Tribune (1990)*
- * Owner/editor of "Line Up" art newsletter 1978-1989*

As a teacher, Carolyn taught at various institutions:

- * Los Angeles Community College,*
- * The Creative Arts Group, Sierra Madre, CA,*
- * The Pasadena Art Museum*
- * Yakima Valley Community College, Yakima, WA*



She was an active member of many art-related groups including:

- * *The American Tapestry Alliance, Vashon Island, WA*
- * *TAPS (Tapestry Artists of Puget Sound)*
- * *Northwest Designer Craftsman*
- * *Vashon Allied Arts*
- * *The Blue Heron Gallery*
- * *Co-founder of the Fiber Arts Guild on Vashon Island*
- * *Founding member of the Pasadena Art Alliance*
- * *A docent at the Tacoma Art Museum*

Honors and awards for her work:

- * *Honored as a trustee scholar and a graduate fellow in art history at Mills College*
- * *Winner of the Gold Crown award for visual arts from the Pasadena Arts Council in 1982*
- * *Named as a North American Women Artist of the Twentieth Century*
- * *Included in Who's Who in American Art*

International Projects:

- * *Uzbekistan, Turkmenistan (2001)*
- * *World Craft Council meetings (Mexico City, Kyoto, Vienna)*
- * *International Conference on oriental Carpets (Washington DC, London, Vienna, San Francisco)*
- * *China art centers & schools (1978)*
- * *Boliva (1979)*
- * *Union of South Africa (1980)*
- * *China, Silk Road (1984)*
- * *Malaysia, Sarawak (1999)*

Carolyn's works are represented in private, public, and corporate permanent collections, such as:

- * *Pepperdine College, Malibu, California*
 - * *Tokio Marine & Fire Insurance, Los Angeles*
 - * *Huntington Hospital, Pasadena, California*
 - * *General Electric Corp., Fairfield, Connecticut*
 - * *EPCOT, Orlando, Florida*
 - * *International Gas Company, Boise, Idaho*
 - * *Nestle USA, Inc., Glendale, California*
- and many others.*

LIFE ON THE ISLAND

Carolyn was of the third generation in her family to enjoy living on Vashon. Her grandfather, Arthur Nelson, homesteaded on beach property at Tahlequah.

Carolyn loved to sail, entertain guests and friends, play the piano and enjoy the view of Mount Rainier from the deck of the cottage at Shawnee Beach with her husband Clark.

She attended the Church of the Holy Spirit where her ashes will rest in the memorial garden next to Clark's.

Special thanks to Andrew & Jenifer Dyer for being there regularly in her final years. Also, a sincere thanks to the staff of Sunshine Villa and Hospice of Santa Cruz for their care and attendance to the end.

Member News

Lin McJunkin, in collaboration with metal artist Milo White, just transformed a ton of steel and 150 pounds of recycled glass to complete a commission for the Town of Langley, WA. The 9' x 14' x 15' archway entitled "Inferred" is half a spiral mounted on its side. The title refers to what is missing or unseen, and the "coral" pattern of metal cut-outs, embracing Lin's cast glass panels, suggests the plight of coral reefs worldwide.



Jan Hopkins is included in *Contemporary Fiber*, curated by Wendy Haas at Sally D. Francisco Gallery at Peters Valley School of Craft, 19 Kuhn Rd., Layton, NJ 97851. Opening Reception is Saturday, August 27, from 5-7 pm. August 27 - November 6, 2016

Invited artists who utilize long-used textile and basketry techniques in combination with current aesthetic ideas, resulting in contemporary sculpture in two and three dimensions, the incorporation of light and shadow, and the evolution of conventional ideas into unexpected artworks.

Other invited artists exhibiting: Emily Dvorin, John G. Garrett, Sandra J. Heard, Brian Jewett, Tara Keress, Nancy Koenigsberg, Gyongy Laky, Elizabeth Morissette and Karyl Sisson.

Falling

2015, 38"x15"x9"

Materials: peels of grapefruit, pomegranate, melon and cantaloupe, leaves, yellow cedar bark, waxed linen and watch parts. Photo credit: Duane Reed Gallery



images online: www.janhopkinsart.blogspot.com

Member News

“Paper Translations” An exhibition at Kirkland Arts Center Gallery

“Paper Translations” is the third exhibition of the work of eight Western Washington artists who transform machine and handmade paper into artist books, sculpture, jewelry, baskets and other visual objects.

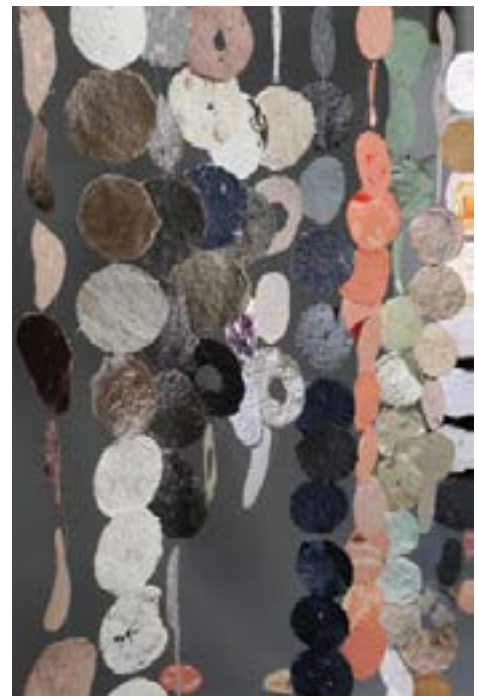
NWDC members Dona Anderson, Danielle Bodine, Zia Gipson, Lois James, and Dorothy McGuinness exhibiting along with Mary Ashton, Jean-Marie Tarascio, and Sande Wascher-James all use paper for its inherent infinitely malleable character, not just as a substrate for traditional artists’ media.

The exhibition runs from September 17 to November 19, 2016. Please join the artists at the opening reception on Friday, September 16 from 6 to 8:30 pm.

Kirkland Arts Center
620 Market Street,
Kirkland, WA 98033
www.kirklandartscenter.org (425) 822-7161



Dona Anderson
“Frank G”
10”x20”x15”



Zia Gipson
Rainfall
6’x6’ installation
Handmade paper



Danielle Bodine
Moonlight Flight
3’Hx6’Wx7”D installation
Mulberry and recycled papers,
natural and found objects,
waxed linen

Member News

Continued: "Paper Translations" An exhibition at Kirkland Arts Center Gallery



Dorothy McGuinness
Dodecahedron
10"x10"x10"

Lois James
Falling Sun
44"Hx16"W
Pulp Painting



Jill Nordfors Clark traveled to Lodz, Poland in May with Friends of Fiber Art (<http://www.friendsoffiberart.org>), for the opening of the 15th International Triennial of Tapestry exhibition, at the Central Museum of Textiles, May 9 to October 30, 2016.

Jill was invited to exhibit her work as one of five fiber artists representing the USA. The exhibition includes 150 works from 50 different countries. Jill's entry, WHEN A TREE FALLS IN THE FOREST, was inspired by the words of Anglo-Irish philosopher Bishop George Berkeley, "When a tree falls in the forest, and no one is around to hear, does it make a sound?"

The series of stitched lace like columns represents the ghosts of fallen trees, and the resulting scars on the land caused by clear-cut logging in the forests of the western USA and Canada.

WHEN A TREE FALLS IN THE FOREST, 6' H X 5' W X 4' D
needle lace embroidery, hog casing, reed, acrylic paint, yarn



Detail

WHEN A TREE FALLS IN THE FOREST installed in the Central Museum of Textiles, Lodz, Poland



Member News

NWDC members to teach at NBO Conference in July 2017



Five NWDC members have been chosen as instructors for the upcoming National Basketry Organization Conference, Tradition and Innovation in Basketry IX, to be held at UPS in Tacoma WA July 18-23, 2017

Lanny Bergner, Danielle Bodine, Jill Nordfors Clark, Barbara De Pirro and Katherine Lewis are among the 12 instructors offering classes during the conference.

In addition, a visit to Jan Hopkins' studio will be included as part of a "hands off" class touring studios, galleries and exhibits around the Puget Sound.

Conference registration begins Sept. 15, 2016 for NBO members. Non-members may register beginning Oct. 15, 2016. Full information about the classes and registration is available here: <http://nationalbasketry.org/9th-biennial-nbo-conference/>

Conference scholarships are available. The application period is from Sept. 1 to Oct. 7, 2016. <http://nationalbasketry.org/wp-content/uploads/2014/10/Final-NBO-2017-Scholarship-Forms.pdf>

In conjunction with the conference, the NBO juried exhibition, All Things Considered 9: Basketry in the 21st Century will be shown at the American Art Company in Tacoma, and then will travel to two additional locations. NWDC member Lloyd Herman will be the juror for this exhibit, and the opening night speaker at the NBO conference. Entries may be submitted thru Feb. 15th, 2017. Full details at <http://nationalbasketry.org/all-things-considered-update/>

Member News

Lanny Bergner will be one of the exhibiting artists in BAM Biennial 2016: *Metalmorphosis*, September 2, 2016 – February 5, 2017 at the Bellevue Arts Museum.

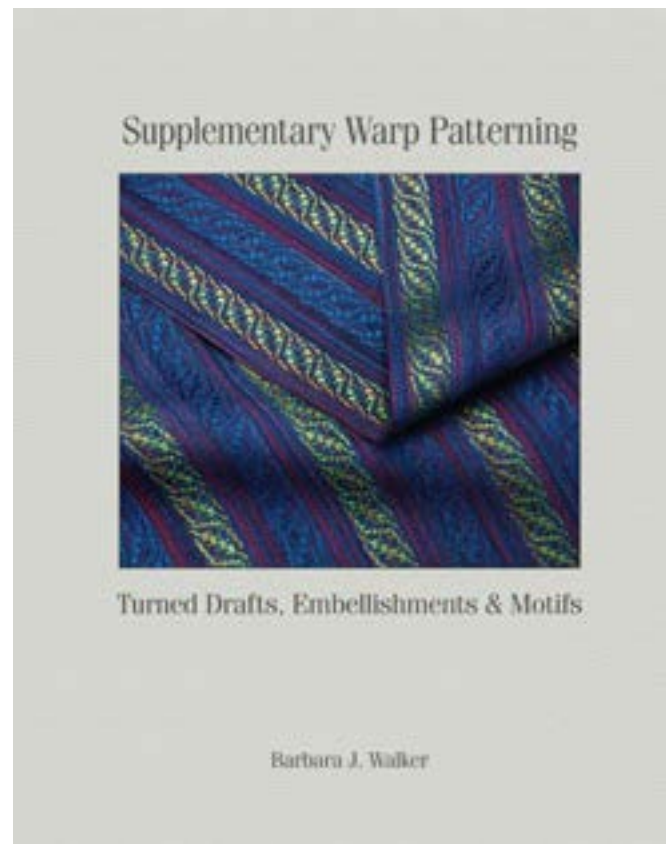


Primordial Muse: Dark Matter/Grey Matter will consist of 41 suspended forms made out of flame treated stainless steel mesh.

<http://www.lannybergner.com/>

Barbara J. Walker has published *Supplementary Warp Patterning: Turned Drafts, Embellishments & Motifs*, a culmination of her thirty years of weaving with more than one warp. Available from: www.barbarajwalker.com

Barbara has also kindly volunteered to be our new Email Blaster. You can find her contact information on this and the final contact page of the newsletter.



Member News

Barbara De Pirro's two latest installations:

Roots & Vines and *Pollinate & Bloom*.

Roots & Vines

“A mysterious unexpected form has taken root, its fibrous tendrils clinging to the surface, reaching outward into the landscape. Inspired by nature’s ability to regenerate, De Pirro developed methods that mimic these plant structures, using an invasive fiber as her medium. She collected hundreds of post consumer plastic bags from the local communities, cut them into strips; and then painstakingly crocheted individual vines that were woven into this sinuous form.”

Roots & Vines is installed & on display through October. Located within the Amazon windows in the South Lake Union neighborhood of Seattle. Special thanks to storefronts Seattle & Shunpike ! Barbara De Pirro



Member News

Pollinate & Bloom

“Imagine standing under a field of strangely beautiful flowers each suspended high above the ground under the leaf canopy of a majestic Maple tree surrounded by the linear architecture of the city. These playful flowers fill the sky with color & light, inviting visitors to look up & interact in a unique experience that combines nature, art & architecture. These eco-flowers have been created using hundreds of reclaimed plastic bottles (& caps) rescued from the waste stream then transformed into art!”

Bellwether 2016: Confluence, July – October, installed within a majestic Maple tree located at 106 Ave. NE (between NE 4 & 8 St., along the pedestrian corridor) in Bellevue, WA. With gratitude to the installation expertise of Art Site Ltd and to Bellevue Arts & Culture for hosting my project! Barbara De Pirro



<http://www.depirro.com/>

<https://www.facebook.com/pages/De-Pirro-Studio/371920172908649>

https://instagram.com/de_pirro_studio/

Hello NWDC! It is great to have the 2 Facebook pages working for us! For the 500+ fans of the business page we would LOVE to see as many process shots from the studio from the past creative year.

Please send these photos with small info posts to Barbara De Pirro depirro@earthlink.net or CJ Hurley cj@cjhurley.com for the Business Page announcements.

NWDC Members: Facebook Business Site

Social Media is key to marketing.

Steps to using the NWDC FB Page

* Please join the NWDC Facebook Page at this link: <https://www.facebook.com/pages/Northwest-Designer-Craftsmen-NWDC/355877767779930>

* Please send this same link to your friends to join as a fan, and to show that you are a part of an illustrious craft guild in the Northwest.

Making a FB Page for your art:

It is best to market your work with a FB Business page. You can start one by going to the HOME page and look at the left side column. You will see a category called PAGES. Click on START A NEW PAGE. From here you can operate your business page. This is truly the best practice as fans do not have to be involved in personal activity.

We will be featuring a focus of media per month on the Facebook page. Along with your regular news of studio events and art exhibitions, please note that we are going to try to drive traffic to our own websites and Facebook pages via the NWDC group page.

In the following months, please do extra posting or “liking” or “sharing” if you are working in a particular medium, there will be a month dedicated to that. Share articles about your medium or links to particular shows with artists making work in that format. Also, a great time to share something special to your practice.

Facebook posts can be more focused.

Please send an email with your info to Barbara De Pirro depirro@earthlink.net or to Barbara: cj@cjhurley.com

January : Wood artists — post away! Share photos, articles of wood shows, and wood making techniques.

February : Fiber Artists

March : Glass Artists

April : Jewelry

May: Basketry

June: Clay/ Ceramic

July: Beadwork

August: Craft- in general

Sept: Fiber Arts/ textile

Oct: Mixed Media

Nov: Sculpture

Dec: Hand Made Gifts

Please send information regarding your artwork, shows, craft events, and other related topics to

CJ Hurley: cj@cjhurley.com

Barbara De Pirro depirro@earthlink.net

How to submit information to the NWDC newsletter

The deadline is the 15th of the month for the next month's newsletter. What is appropriate to submit? Anything in your professional life you would like to share with NWDC members: exhibits, awards, classes, art or studio sales, call for entries, etc. Be sure to include all the information: who, what, when, where & why.

How should text be formatted? Please send your information in the body of an e-mail, **not as a Word document**. The newsletter editor will copy/paste. Please, do NOT send your text in PDF files or jpeg copies of gallery postcards! The text in jpegs and PDFs cannot be copied and pasted.

What about Images? We want images! They need to be in jpeg format, 72 dpi, about 400 pixels on the longest side. Please include name, title, medium, dimensions, etc. Website addresses are great too.

The deadline is the 15th of the month. Send to Denise Snyder at: NWDCeditor@gmail.com

Co-Presidents- Julia Lowther NWDCpresident@gmail.com and Lin McJunkin lin@mcjunkinglass.com 360-941-6742

Secretary - Liza Halverson liza@halvorsenclay.com
 Treasurers - Sally Anaya sally@sallyanaya.com and
 Mark Ditzler mark@markditzler.com
 Archivist - Sharrey Dore s.dore@comcast.net

NWDC VOLUNTEERS

Education Chair - Lin Holley - <mailto:Holleyathome@gmail.com> 206-715-0932

Education Support - Steph Mader steph@toltriverstudios.com

Museum Liaison - Nancy Loorem nancyelizabethloorem@mac.com

Tech Support - Eva Funderburgh - eva.funderburgh@gmail.com Bellevue Arts Museum lecture and workshop series

Exhibition Committee

Gale Lurie galeluriepotttery@gmail.com, 206 567-0511

Joyce Hayes - hayes.joyce@gmail.com, 206-522-6965

Hospitality - VACANT

Hospitality for the large parties: VACANT

Membership Chair- Steph Mader

E-Mail Blasts - Barbara J Walker barbara@barbarajwalker.com

Newsletter - Denise Snyder NWDCeditor@gmail.com

Newsletter Proofreaders - Natalie Olsen, Ginny Conrow, Lisa Flowers Ross

Publicity and Social Media - Julie Conway info@illuminataglass.com

Roster / Data Base - Delores Taylor - delorestaylor@mac.com 425-788-0817

Facebook Group - CJ Hurley - cj@cjhurley.com and Nia Michaels and Barbara De Pirro depirro@earthlink.net

Volunteer Coordinator - Patricia Resseguie - NWDCvolunteers@gmail.com 425-232-2483

Newsletter Proof Readers - Lisa Flowers Ross, Ginny Conrow, Natalie Olsen

Image Bank - Vacant

Rob Beishline - Instagram

Don't forget to say
 "thank you" to these
 people who make
 NWDC work for you.