

May 2016



Northwest Designer Craftsmen

www.nwdesignercraftsmen.org/

Facebook: <https://www.facebook.com/pages/Northwest-Designer-Craftsmen-NWDC/355877767779930?sk=wall>

NWDC online calendar: <http://www.nwdc-online.org/calendar/>

Members' Only Site www.nwdesignercraftsmen.org/ then click on Members Only

Meetings and Speakers



Phinney Neighborhood Center Program:

2nd Wed. of the month

Board meetings 5:30-7 (open to everyone)

Speaker 7-8 pm / Social Time 8-9 pm

Phinney Neighborhood Center location:

6532 Phinney Ave N, Seattle, WA 98103, in the lower (east) building basement

May 11 Jan Hopkins (fiber artist)

June 8 Julia Haack (wood sculpture)

Jan Hopkins Is the NWDC May Presenter



Jan Hopkins will present a "Meet the Artist", Wednesday, May 11th at 7:00 PM at the Phinney Neighborhood Center, 6532 Phinney Avenue, N. Seattle, WA 98103. The presentation will include show and tell about her past and current work. She will also talk about her relationship with Artist Trust and her experience applying for the Fellowship award. This presentation is open to the public.

This event is made possible by the Artist Trust 2015 Fellowship Grant. The "Meet the Artist" event is part of the grant whereby award recipients outreach into a community unaware of their artwork. Enjoy! To learn more about Artist Trust see: <http://www.artisttrust.org>

Amphitrite, 36"x12"x10", 2007. Double walled grapefruit peel torso, stitched together and molded, grapefruit peel, cantaloupe peel, waxed linen, lotus pod tops, ostrich shell beads, yellow cedar bark and paper. Photo credit: Carie Stryka. Private Collection

artist | TRUST
SUPPORTING ART AT ITS SOURCE

Jan Hopkins (Everett) is a fiber artist creating basketry and sculptural figurative art with alternative materials such as citrus and melon peel, sturgeon skin, lotus pods, seed pods and leaves, in addition to traditional basket making materials. Hopkins is known for her narrative figurative female sculptures and, throughout her career, has been inspired by traditional craft and textiles. Her current work includes a collaboration with Lyonel Grant (Maori Designer and Carver from Auckland, NZ) for the Fiber Arts Studio at the Evergreen State College and a project about the Japanese American Internment for a future exhibition with her husband Chris Hopkins, Jan has been awarded two Grants for Artist Projects (2007 and 2010) and a 2015 Fellowship Award from Artist Trust. She was also awarded the 2012 Samuel and Patricia Smith People's Choice Award at Bellevue Arts Museum's BAM Biennial 2012: High Fiber Diet, for her piece *Oh Eleanor*.



Mother Hen

Hen, 5-1/2" x 11" x 5-1/2"

Chick 3" x 6-1/2" x 3",

2009. Cantaloupe peels, grapefruit peels, Alaskan yellow cedar, ostrich shell beads and waxed linen. Photo credit: Ken Rowe. Private Collection



Homage,

15-1/2" x 5-1/4"

2004. Grapefruit peel, waxed linen, yellow cedar bark and paper.

Photo credit: Jerry McCollum. Private Collection



Oh Eleanor

30-1/2" x 28" x 12"

2012. Grapefruit peel, cantaloupe peel, ginkgo leaves, ostrich shell beads, cedar bark, hydrangea petals, lunaria seed pods and waxed linen. Photo credit: Ken Rowe.



Out of the Mouths of Babes (Japanese American Internment Series), 19" x 24"

2015. Cantaloupe peel, grapefruit peel, cedar bark, waxed linen, acrylic paint on hemp paper and mounted on wood panels and frame.

Help Save KPLU with Your Art

The very existence of public radio station 88-5 KPLU is under threat. The station must raise seven million dollars to buy its independence by June 30th. Otherwise, it will be sold off to KUOW. If that's allowed to happen, KPLU and all that we love about it will cease to exist.

You can help.

Donate a piece of your art to the auction being held at Sanford and Sons in Tacoma on May 21. The money your contribution will be donated to the Save KPLU campaign.

How to Contribute

In Seattle, call NWDC member Loren Lukens at 206-935-6740. In Tacoma, NWDC member Cheryl DeGroot at 253-472-7279. Deadline for contributions is May 10th for the May (date) event. Thanks in advance for whatever you can do.

Item 1

NWDC Needs Volunteers. Just a Few Hours. Once A Year.

“Not being able to do everything is no excuse for not doing everything you can” - Ashleigh Brilliant

NWDC continues to have many unfilled positions that are very important to maintaining a vibrant association. We are thankful for the many volunteers who have already contributed during 2016. Have you yet fulfilled your commitment?

If not, the following positions - detailed on the Members Only page on the NWDC website - need you. Here is the link: www.nwdesignercraftsmen.org/ If you have questions, please contact NWDCvolunteers@gmail.com.

- Meeting Hospitality
- Party Hospitality
- Assistant to Volunteer Coordinator
- Still Photographer
- Meeting Journalist
- Event/Meeting Greeters
- Meeting Site Researcher
- Publicity Task Force
- Email Blaster
- Japanese Translator

Item 2

Thank You Volunteers!

Our deepest gratitude to Annette Tamm who has served with efficiency and good cheer as our Email Blaster. Thanks, too, to Joline El-Hai who agreed to act as temporary E-Mail Blaster. We are thrilled that Steph Mader stepped forward to be Membership Chair and that Nancy Loorem will be our new Museum Liaison. Mark Ditzler has agreed to investigate the best ways to get news into the community about NWDC programs and exhibitions. Jeanette DeNicholis Meyer will be penning notes to thank those who help NWDC. (Jeanette lives in Portland. She is a great example of what can be done by out-of-area members.) NWDC also enjoyed a terrific presentation by Stewart Wong at our April meeting. Dona Anderson brought delicious spice cake, fruit and nuts to keep us energized. And thanks to the members who helped set up the April meeting and then helped put away chairs and tables. Many more volunteers, Board Members and committee chairs continue to contribute time, ideas and enthusiasm to NWDC. We could not exist without them.

Member News

Collaborative Art Proposal with Carol Milne



Carol Milne is constructing a Glass costume to be worn in the Glass Fashion Show at the Glass Art Society conference in Corning, New York on June 11, 2016.

The costume is based on entrelac knitting, and composed of many small blue and white glass entrelac squares. It is still under construction, but will be composed of 250-300 pieces and be lit with LED lighting.

In order to fund the project, Carol is pre-selling the individual pieces for a discounted rate. The catch is that the pieces will be used in the costume and then mailed to you sometime after June 11th, 2016. The cost is \$75 each and includes shipping and sales tax. You can pre-order yours on Carol's website at the following link: <http://legacy.carolmilne.com> or simply follow her progress on her Facebook page:

<https://www.facebook.com/Carol-Milne-Artwork-225956857456127/>

--

Carol Milne, sculptor
www.carolmilne.com
(206)368-8743



Member News

NWDC member **Danielle Bodine** will be exhibiting her fiber sculptures, along with painter Gordy Edberg, in a two-artist show at MUSEO gallery on Whidbey Island. Please join the artists for the opening reception Saturday, May 7, 5-7pm.

The show will be from May 6-29, 2016.

MUSEO

215 First Street/P. O. Box 548

Langley, WA 98260

360.221.7737

<http://www.museo.cc>

The Changelings Series: Red Heads 1,2,3 grouping
22"H x 9"W x 5"D, 2016

Mulberry papers cast on baskets and funnels, removed, reformed, then painted and collaged with prints. Coiled waxed linen baskets, beads, antique wooden wine barrel stopper, vintage wooden yarn spool, hair brush tines.

Photo credit: Michael Stadler



Danielle Bodine's work is published in Fiber Art Now Magazine.

Fiber Art Now magazine Spring 2016 issue is now available on-line or in print. I'm very honored to have an artist profile of my work in this edition.

COLOR, TEXTURE, FORM: The Sculptural Basketry of Danielle Bodine
Artist profile by Adrienne Sloane, pages 36-39

for more information contact: <http://fiberartnow.net>

Member News

Sharon Rowley's piece, *Emerging*, is part of the *Cutting Edge* exhibit at the Washington State History Museum, 1911 Pacific Avenue, Tacoma, Washington, running April 16 to August 21, 2016.

<http://www.washingtonhistory.org/visit/wshm/exhibits/featured/quilts/>

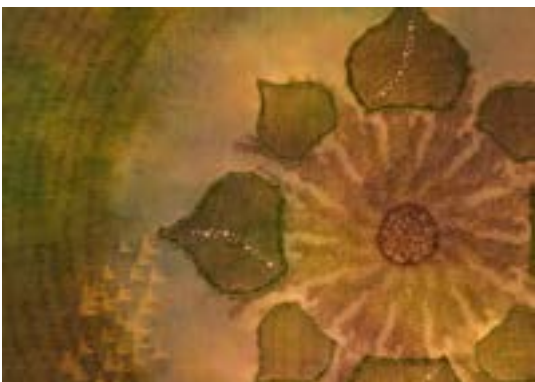


Emerging

All 3 pieces are 21" w x 21" h, 3 layers of silk, dyed, painted, discharged, embroidered.

She also has two pieces juried into the Surface Design Association's *Fiber Fusion* exhibit. *Prayer Wheel* will travel to four galleries in the coming 9 months: Allied Arts (Richland), VALA Art Center (Redmond), Northwind Arts (Port Townsend), and Schack Art Center (Everett) where *Four Faces of Compassion* will join the exhibit.

<http://sdafiberfusionshow.org/>



Four Faces of Compassion – detail



Prayer Wheel

Member News

Fantasias in Fiber:

Larkin Jean Van Horn and Caryl Bryer Fallert-Gentry

Fantasias in Fiber at the Northwind Arts Center, 701 Water Street, in Port Townsend, WA showcases the work of NWDC Members Larkin Jean Van Horn and Caryl Bryer Fallert-Gentry.



The show runs from May 5th – 29th, with the Opening Reception from 5:30 – 8:00 pm on Saturday, May 7th. The Art Talk is Sunday, May 8th at 1:00 pm. Exhibit hours are Thursday through Monday 11:30 am – 5:30 pm.

Larkin Van Horn's mixed-media 3-D structures and award-winning wearable art will delight both eyes and fingertips, while exploring the beauties of the natural world, as well as the inner world of spirit. Each piece represents the combination of her imagination, inspiration from the world around her, and her strong sense of drama. The intense forms and colors of her work are sometimes a response to the grey Pacific Northwest winters. Other times, they reflect the natural energy of spring and summer. Larkin wants her work to have as much interest for the fingertips as for the eye – hence the decision to work with fabric, fiber, beads and found objects.

Larkin is a member of the Northwest Designer Craftsmen, Studio Art Quilt Associates, Surface Design Association, and Whidbey Island Surface Design. She is in demand as a teacher and lecturer, and has published books on beadwork, and patterns for wearable art garments and fabric vessels. Her work has been displayed and won honors both regionally and nationally, and is in many private and church collections. Website: www.larkinart.com

Caryl Bryer Fallert-Gentry's work relies on the qualities of color, line and texture to engage the spirit and emotions of the viewer, evoking a sense of mystery, excitement, or joy. Her fiber artwork, both figurative and abstract, is easily recognized for their brilliant colors and illusions of light, depth and emotion. Her attention to detail has earned her a reputation for fine craftsmanship, as well as stunning designs.

Caryl Bryer Fallert-Gentry is internationally recognized for her award-winning fine-art quilts, which have appeared in hundreds of national and international exhibitions, collections, and publications. Honors include 100 Best Quilts of the 20th Century, Silver Star (lifetime achievement) Award, and selection as one of the thirty most influential quilters in the world. Caryl has lectured and taught in eleven countries around the world and continues to share her knowledge through her publications and her website. Website: www.bryerpatch.com



Cordelia: Jewel of the Sea
bead embroidery
7"x11"x1"



The Mentor, fabric and beads
7"x12"x4"



Phases of the Moon fabric and beads
5"x5"x5"

Upper right corner: *Tree House I*
fabric and beads 4"x15"x4"

Member News

Carol Gouthro had new work featured in Gallery IMA's Tenth Anniversary show during the month of April. <http://galleryima.com/>



Carol Gouthro is Published in
Ceramics Magazine



Her work was also featured in the April issue of Ceramics Monthly Magazine in an article by Matthew Kangas.

<http://ceramicsdaily.org/ceramics-monthly/article/carol-gouthro-at-gallery-ima/>

Member News

Naoko Morisawa's new installation for the City of Edmonds is installed at Main St and 8th Ave. It was commissioned by the City of Edmonds and Edmonds Parks and Recreation.



Liberated Octopus
300" W x 70" H

Naoko's artwork was also given one of the two Top Juror's Awards from a total of 218 entries at the 2016 Kirkland Arts Center Gallery exhibition on the opening day.

<http://kirklandarts.wpengine.com/eo/events/2016-kac-artists-exhibition/>

Editor's Note: This is information taken from the KAC website.

The KAC Artists' Exhibition is an annual show in the Kirkland Arts Center Gallery featuring work from our talented community of artists in a variety of media. The competition was especially fierce this year, with 79 KAC affiliates – students, instructors, staff, volunteers, and donors – submitting 218 works for consideration. The 34 pieces of artwork from 22 local artists selected for this year's show feature everything from contemporary photography to figurative prints to mixed media constructions, plus much more.

Hello NWDC! It is great to have the 2 Facebook pages working for us! For the 500+ fans of the business page we would LOVE to see as many process shots from the studio from the past creative year.

Please send these photos with small info posts to Julie Conway info@illuminataglass.com or CJ Hurley cj@cjhurley.com for the Business Page announcements.

NWDC Members: Facebook Business Site

Social Media is key to marketing.

Steps to using the NWDC FB Page

* Please join the NWDC Facebook Page at this link: <https://www.facebook.com/pages/Northwest-Designer-Craftsmen-NWDC/355877767779930>

* Please send this same link to your friends to join as a fan, and to show that you are a part of an illustrious craft guild in the Northwest.

Making a FB Page for your art:

It is best to market your work with a FB Business page. You can start one by going to the HOME page and look at the left side column. You will see a category called PAGES. Click on START A NEW PAGE. From here you can operate your business page. This is truly the best practice as fans do not have to be involved in personal activity.

We will be featuring a focus of media per month on the Facebook page. Along with your regular news of studio events and art exhibitions, please note that we are going to try to drive traffic to our own websites and Facebook pages via the NWDC group page.

In the following months, please do extra posting or “liking” or “sharing” if you are working in a particular medium, there will be a month dedicated to that. Share articles about your medium or links to particular shows with artists making work in that format. Also, a great time to share something special to your practice.

Facebook posts can be more focused.

Please send an email with your info to Julie: info@illuminataglass.com or to Barbara: cj@cjhurley.com

January : Wood artists — post away! Share photos, articles of wood shows, and wood making techniques.

February : Fiber Artists

March : Glass Artists

April : Jewelry

May: Basketry

June: Clay/ Ceramic

July: Beadwork

August: Craft- in general

Sept: Fiber Arts/ textile

Oct: Mixed Media

Nov: Sculpture

Dec: Hand Made Gifts

Please send information regarding your artwork, shows, craft events, and other related topics to

CJ Hurley: cj@cjhurley.com

Julie Conway info@illuminataglass.com

How to submit information to the NWDC newsletter

The deadline is the 15th of the month for the next month's newsletter. What is appropriate to submit? Anything in your professional life you would like to share with NWDC members: exhibits, awards, classes, art or studio sales, call for entries, etc. Be sure to include all the information: who, what, when, where & why.

How should text be formatted? Please send your information in the body of an e-mail, not as a Word document. The newsletter editor will copy/paste. Please, do NOT send your text in PDF files or jpeg copies of gallery postcards! The text in jpegs and PDFs cannot be copied and pasted.

What about Images? We want images! They need to be in jpeg format, 72 dpi, about 400 pixels on the longest side. Please include name, title, medium, dimensions, etc. Website addresses are great too.

The deadline is the 15th of the month. Send to Denise Snyder at: NWDCeditor@gmail.com

Co-Presidents- Julia Lowther NWDCpresident@gmail.com and Lin McJunkin lin@mcjunkinglass.com 360-941-6742

Secretary - Liza Halverson liza@halvorsenclay.com

Treasurers - Sally Anaya sally@sallyanaya.com and

Mark Ditzler mark@markditzler.com

Archivist - Sharrey Dore s.dore@comcast.net

NWDC VOLUNTEERS

Education Chair - Lin Holley - <mailto:Holleyathome@gmail.com> 206-715-0932

Education Support - Steph Mader steph@toltriverstudios.com

Museum Liaison - Nancy Loorem nancyelizabethloorem@mac.com

Tech Support - Eva Funderburgh - eva.funderburgh@gmail.com Bellevue Arts Museum lecture and workshop series

Exhibition Committee

Gale Lurie galeluriepotttery@gmail.com, 206 567-0511

Joyce Hayes - hayes.joyce@gmail.com, 206-522-6965

Hospitality - VACANT

Hospitality for the large parties: VACANT

Membership Chair- Steph Mader

E-Mail Blasts - vacant

Newsletter - Denise Snyder NWDCeditor@gmail.com

Publicity and Social Media - Julie Conway info@illuminataglass.com

Roster / Data Base - Delores Taylor - delorestaylor@mac.com 425-788-0817

Facebook Group - CJ Hurley - cj@cjhurley.com and Nia Michaels and Barbara De Pirro depirro@earthlink.net

Volunteer Coordinator - Patricia Resseguie - NWDCvolunteers@gmail.com 425-232-2483

Web Liaison - Trudee Hill - trudee@trudeehill.com 310-908-6675

Image Bank - Vacant

Rob Beishline - Instagram

Don't forget to say
"thank you" to these
people who make
NWDC work for you.