

[View this email in your browser](#)



Member Newsletter

October 2017

President's Note

Letter from Co-President Lin McJunkin

Since we first announced new programming in the September 2017 newsletter, your Officers and Board of Directors have been gratified to hear from some of our members about what they value in NWDC programs. These ideas have been incorporated as we continue toward our goals of creating programs designed to enhance your experience of NWDC, while attracting and retaining membership.

Through excellence in educational programs, exhibition opportunities, and member socials, and by enhancing appreciation of fine craft within our regional community, we are seeking to build on the programs that our members cherish, while creating new versions and approaches.

Before I tell you more about new programs, I want to acknowledge the passing in early September of Lifetime Member Ron Ho. His contributions to NWDC and the craft world are numerous and will be detailed elsewhere in our newsletters. I look forward to the future release of the Living Treasures video about Ron, and I am thankful he worked so hard in the last days of his life to contribute to the filming. Although I did not know Ron, I still mourn his loss as part of our NWDC heritage, one in which we can all play important roles.

One area in which the Board is making great strides is to use 21st century technology for efficiency, visibility, and professional presentation. Our new newsletter format and recent updates to our website are examples of some of these efforts.

On September 8, several Officers and Board Members participated in an historic first-time **video-conference** Board Meeting, carefully organized by President Julia Lowther. There were a few glitches, and there is still a place for face-to-face meetings, but most participants seemed pleased to use the time saved from sitting in Seattle's legendary summer traffic to talk about the upcoming year. I was off the grid and unable to participate,

but I am sharing Patricia Resseguie's fine summary of the **2017-18 Event Line-up**. It should look something like this:

2017

October 21, 2 p.m.:

Chris Maynard presentation at BAM with Member Social and time for viewing the BAM exhibition, *Cut Up, Cut Out*.

October:

Members should be **recruiting** new applicants who meet our qualifications, as well as submitting nominations for Lifetime and Honorary members.

November 4:

Self-Portrait exhibition in honor of Ron Ho to help fund his section of our Living Treasures Videos.

November:

Our new, improved **member voting process** will roll out, with thanks to new Membership Chair Liz Axford, President Julia Lowther, and our professional website guru, Jen Grogan. Details will follow.

It is our goal to raise the number of members who vote from the current 50% to a much higher number.

Applicants need only 51% approval of the voting members to be accepted. By increasing the number of members voting, we know that more people are choosing new members FOR LIFE based on their high-quality work.

2018

January:

Annual Meeting and Party at Rainier Center in Seattle, date TBA. New Member Presentations, plus Current Member Presentations (to broaden the audience for our beloved members' presentations formerly given at our monthly meetings at Phinney Center).

February:

Quarterly Program - Negotiations are underway with a major regional museum where a show of national importance will be exhibiting.

April:

Slide Bank Presentation of members' work.

May or June:

Quarterly Program – TBA.

August:

Studio Visits – this program will give our members an opportunity to visit several members' studios followed by our Summer Social.

October:

Quarterly Program - possibly as a starting version of the proposed **2020 Symposium**.

October:

Estimated opening for **Washington State Convention Member Exhibition**. This will be a curated show with guaranteed acceptance of any member who enters work for exhibition. Information will be

submitted to the Newsletter soon so that members can begin to plan work for the exhibition. We expect to do some special programming and a Social event around this.

Also Pending: Negotiations are under way with regional Museums in WA and OR for additional shows.

That is a huge plate of goodness and we are very excited! But none of this will happen **without new officers, especially President and Vice-president**, both of whom retire from long service at the end of this year. As all reminders of our mortality are, Ron's passing is also an invitation to ask ourselves what our role in the legacy of NWDC will be. Please ask yourself if taking an Officer position or volunteering for one of our new programs can be your contribution to NWDC. NWDC needs volunteers in order to remain a permanent fixture in a changing world. Volunteer Coordinator, Patricia Resseguie, will be sending out calls for volunteers, but why wait? Contact her at NWDCvolunteers@gmail.com.

We appreciate your comments and use them to refine our activities. Please remember that everyone is welcome at all meetings and we will be announcing them in advance so that you can participate and share your comments, concerns and praise. Also, please feel free to contact me or any other Officer or Board Member with your comments.

- Lin McJunkin, NWDC Co-President - *with hopes for your smooth personal and professional transitions in this season of change*

Letter from Co-President Julia Lowther

While Lin McJunkin has been focusing on exciting new programs for both members and the public to enjoy, I have been working on making the machinery behind the scenes run more smoothly and efficiently. As a result, the board has embraced a couple of key pieces of software - MailChimp and MembershipWorks.



NEW LOOK for Email Blasts & Newsletter:

NWDC has switched to using MailChimp to distribute our Newsletters and email blasts, making our messages more accessible and legible on smartphones and tablets.

This change also allows members to **DIRECTLY** update their own email addresses, and to unsubscribe if they choose (we hope they won't unsubscribe, but we want to make it easy for them if that's what they want to do).

I'm very grateful to Lisa Flowers Ross and Brian O'Neill for creating a beautiful, fresh professional look for our MailChimp messages!

NEW REQUIREMENTS for Email Blast

Material:

The move to more user-friendly MailChimp means that we are moving away from sending messages that contain pdfs and other attachments that don't play well with mobile devices. So if you are submitting information for an email blast, please **ONLY** send text and images, no attachments.



COMING SOON! New Look for Member Profiles on Web Site:

MembershipWorks is a membership management plugin for our web site that will allow us to offer members a number of advantages. One of these is that members will soon be able to create/edit/update their own member profiles on the website.

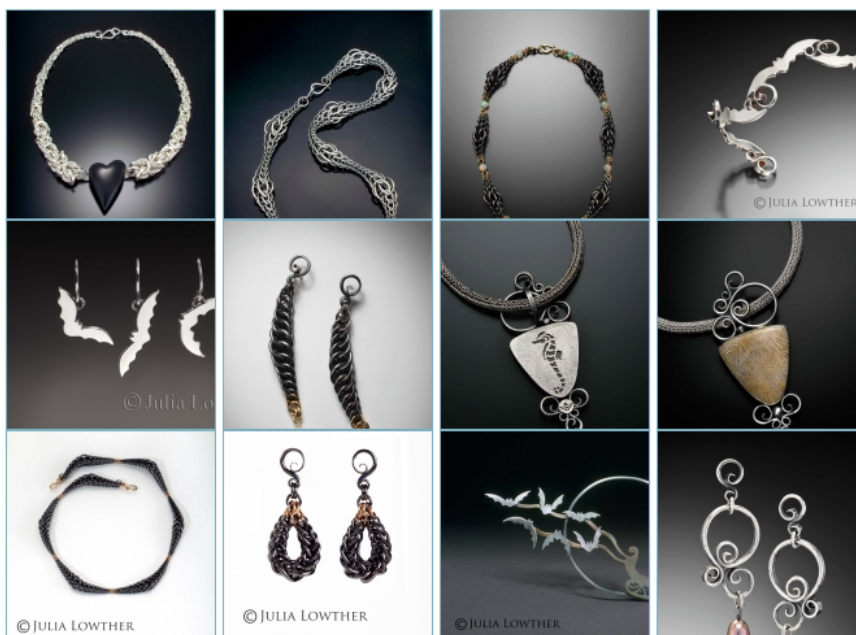
Here is an example of what the new member profiles will look like (this is the profile that I created for myself on the Seattle Metals Guild website, an organization that has been using MembershipWorks for several years with very positive results): <https://tinyurl.com/SMGProfileExample>



Julia Lowther

Jeweler and Jewelry teacher. Curvy tapered chains. And bats...

Weaving chain is a highly repetitive task. Paradoxically, both considerable skill and a comfortably loose focus are required. I like that you can't see the hard work in the smooth finished chains, that all you see are the pleasing tapered shapes, and the dark silver contrasting with the bright gold - just as the complicated execution of the making process contrasts with the shiny, shimmery, pretty result.



For those members who already submitted images and text for the old member profiles, we will move that existing data to your new profile, and then you can edit/update it whenever you choose!

With MembershipWorks, ALL members will be listed on the website, instead of only those members who submitted images. Members can also be contacted through the website by their adoring public (rest assured emails are not visible to said adoring public).

COMING SOON! New Dues Management:

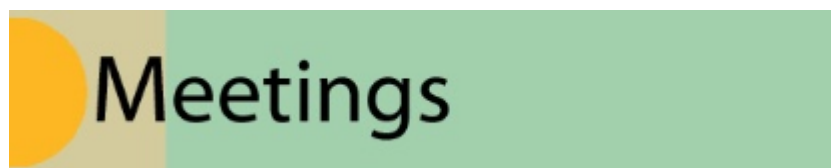
Another wonderful feature of MembershipWorks is that it will allow members to manage their own dues payments. You can pay easily by credit card, access your account to see if you are paid up or not, and even set up your payments to renew automatically every year.

If dues are not paid, the member's profile on the website is suppressed but NOT deleted, and the profile will magically re-appear with payment.

We hope both current and new members find these changes helpful and useful, as we continue to make NWDC more efficient and productive. Please feel free to contact me with any questions you have so I can steer you in the right direction for getting your information set up correctly.

- Julia Lowther, NWDC Co-President

nwdcpresident@gmail.com



NWDC and BAM present Chris Maynard Saturday, October 21, 2 p.m.

Take flight on wings of fact and fancy with biologist and author, Chris Maynard, who carves feathers into intricate works of breathtaking art. On **Saturday, October 21, 2017, from 2:00 to 3:30 pm**, NWDC joins in an exciting new partnership with Bellevue Art Museum to present Maynard's talk in conjunction with BAM's *Cut Up, Cut Out* paper exhibition which ends the next day.

Please join in our new NWDC Quarterly Education Series. Bring guests, students, and prospective members. We planned the event so that you can make the date into an outing with lunch prior or dinner following at one of the many restaurants within walking distance of the museum. We also chose Saturday to promote participation, access to parking and more reasonable travel in the region.

The lecture and social is open to BAM's membership and the public to fulfill our mission to *stimulate interest and appreciation for fine craft*. [RSVP](#) early to ensure your space

Maynard will share his personal story, techniques and vision, and tell how his appreciation of birds and the natural world led him to his passionate study and unique art form.



Firmament by Chris Maynard



Gesture by Chris Maynard

NWDC Hosted Social Following the talk in the Forum with Maynard Book Sales and Signing.

RSVP: The talk is **FREE** but you have to register online [here](#). BAM members get into the

exhibit area for free, but non-members have to pay to see the “Cut Up, Cut Out” show.

PARKING: is **FREE** and convenient under the museum.

Member News

Apiarium Impendius: A Commissioned Artwork



Lin McJunkin and her metal partner, Milo White, created *Apiarium impendius* out of 2 tons of steel and 200 unique cast and slumped glass tiles. The 20' x 4' steel and glass tower was commissioned for the new City Center Apartment Complex on the SW corner of the 196th St. I-5 Exit in Lynnwood, WA. Lit from within, the stretched hexagons with fiery red, orange and yellow glass warn of the loss of bees due to Colony Collapse Syndrome, a world-wide threat to our food supply due to climate change and pesticide usage. As the project engineer says, “The tower is a notable entry feature to our building, as well as a gateway feature to the City.”

Governor's Arts & Heritage Award



Riding the Express Bus to and from Seattle, Chihuly
Lynn Di Nino

Lynn di Nino is one of the 6 illustrious honorees recently approved by Washington State Governor Jay Inslee to receive a 2017 Governor's Arts & Heritage Award. The six honorees were chosen based on several criteria, including contributions to arts and cultural development in the state, level of community engagement, quality of work, and significant record of accomplishments.

The Awards were established in 1966 to recognize individuals and artists for their significant contributions to the creative vitality of Washington State.

From the ArtsWA web site:

LYNN DI NINO (PIERCE COUNTY) - ARTS AWARD, INDIVIDUAL

A freelance artist since 1974, Di Nino is self-taught and has been completely self-supporting through private commissions, shows and gallery sales. Her sculptural work stems from news stories, usually involving social or political observation. For Di Nino, the excitement comes in selecting the right materials: maybe concrete, household objects, plastic, shredded newspaper, coffee beans – whatever will express her story in a clever way. She sometimes combines a sober idea with humor for impact. Di Nino also has a long history of creating in four dimensions: the usual three plus working with large groups of artists and presenting performance in real time, involving ideas, costumes, singers, props, actors, dancers, music, lights, and spoken word.

In Memory

Ron Ho, internationally respected art jeweler, died at his Seattle home on September 7, 2017, due to prostate cancer that had spread in his body. He is mourned by family, friends and the arts community.



He was recognized in 1988 as Asian Artist of the Year by the Wing Luke Asian Museum and given a solo exhibition. A year later, he was awarded Pacific Regional Elementary Art Educator of the Year by the Washington Art Education Association, and, in 1990, one of "100 Outstanding Alumni" at the centennial of Pacific Lutheran University, which recognized him again in 2014 with a Distinguished Alumnus Award.

In 1990, the Bellevue Arts Commission recognized him with their Outstanding Achievement in the Arts award. NWDC named him a Lifetime Award Member in 2006.

A year later, the Seattle Metals Guild gave him a Lifetime Achievement Award. Finally, capping his growing recognition, the American Craft Council inducted him into its College of Fellows in 2010.





Ho was recognized for his creativity as an artist-jeweler in many publications, as well, and his work is in the collections of numerous museums internationally.

After his first foreign trip to London, around 1997, he traveled internationally and began to lead groups of like-minded travelers to foreign destinations, largely in southeast Asia.

NWDC is completing a 30-minute biographical video on Ron Ho's life and work. Those who wish to recognize the artist are encouraged to donate by going to the [Living Treasures page](#).

Exhibitions

Interpretations: Conversations **Visions Art Museum**

NWDC Members, Lisa Flowers Ross and Kathleen Probst, will have artwork displayed at the Visions Art Museum in San Diego in the exhibition, *Interpretations: Conversations*. The opening reception will be Oct. 21, 5-7 p.m.

Interpretations: Conversations

Oct. 21, 2017 – Jan. 7, 2018

Visions Art Museum
2825 Dewey St., Suite 100
San Diego, CA



Pictured on top:

Timing by Kathleen Probst
hand-dyed fabrics, thread
35" x 34"

Pictured on bottom:

Leaf Stack #20 by Lisa Flowers Ross
hand-dyed fabrics, thread
33-1/2" x 35-1/4"



Turning Over a New Leaf: Fabric Constructions by Lisa Flowers Ross

In the *Leaf Stack* series, Lisa Flowers Ross abstracts the simple shape of a leaf to explore implied overlapping forms, transparency and intersections of lines. Some of her artworks from the series will be on display in her solo exhibition entitled, *Turning Over a New Leaf: Fabric Constructions by Lisa Flowers Ross*. The exhibition will be at the Metro Gallery in City Hall in Reno, Nevada.



Dates: Oct. 16 – Dec. 1, 2017
Location: Metro Gallery in City Hall
 1 E. 1st St.
 Reno, NV
Hours: Weekdays, 8 a.m. - 5 p.m.

Artwork by Lisa Flowers Ross
Above: *Leaf Stack #19*, 49" x 106-3/4"
Left: *Leaf Stack #22*, 36-1/4" x 37"
Right: *Leaf Stack #14*, 50" x 50"

Announcements

We Need You! Make A Commitment to Help

NWDC needs as many members as possible contributing to the success of your organization. It is easy to get involved. **Contact Patricia Resseguie** at NWDCvolunteers@gmail.com to express your interest in jobs big and small. The following jobs need your commitment.

President
Vice President
Secretary
Exhibitions Committee, especially as an understudy/assistant to Joyce Hayes
Quarterly Programming, all sorts of help needed
Symposium 2020 Planning, all sorts of help needed
Student Mentorship Program, under the direction of Mark Ditzler
Scholarship Program
Publicity/Social Media
Membership Committee, under the direction of Liz Axford
Volunteer Liaison
And other jobs as they come to attention

Please get involved. Achieving NWDC goals is not possible without you.

Accepting New Member Applications Invite an Friend to Join

It's time to open our doors to new members! The application for 2017 membership is now available on the website. The [APPLY FOR MEMBERSHIP](#) link includes the application form and all instructions to complete the process.

Applications may be sent anytime between Sunday, October 1 and Tuesday, October 31, 2017.

Questions may be emailed to the membership chair, Liz Axford, at NWDCMembership@gmail.com.

The vitality of NWDC depends on the quality of our membership. Now -- during the application season -- is the time when new members are created. Our organization thrives with increased diversity of talent, fresh energy, new connections.

Help build NWDC - invite others to join

Are there people you know who should have joined long ago and haven't? Invite them to apply. How about young artists? It would be wonderful to add members who will carry the legacy of NWDC into the future.

Please invite responsibly. Make sure the applicant knows:

- He/she will be juried online by all members.
- The application will require 10 professional images of a cohesive body of recent work.
- A resume of experience/exhibitions is required.

You might offer to review the application and help your applicant present the best submission possible. Once your applicant is accepted, make sure they come to events so

they will have a chance to love NWDC.

Let's continue to build a vibrant and productive organization!

- **Liz Axford**, Membership Chair

(Those living in Washington, Oregon, Idaho, Montana and Alaska are eligible. Juried artist members work in a variety of media, including clay, wood, glass, metal, fiber and mixed media. Still other members support fine craft in the Pacific Northwest as educators, managers of non-profit arts organizations, or buyers of art for public or private collections.

Applicants will be evaluated during November by an on-line jury method that is open to all current members. It is free to apply. If accepted, the annual membership dues are \$50. For information and application, go to the [application page](#).)



Thanks For Your Commitment to NWDC

Over the summer, many of the Officers, Board Members and Committee Chairs spent a significant number of hours preparing an agenda for the Board Retreat and talking through the Calendar of Events and programs for 2017/2018. This is an evolving process involving meetings and emails and telephone calls that sometimes seem unending. It has had one goal in mind: keeping NWDC a vibrant organization now and in the future. The legacy of NWDC is being preserved, even as programs are developed to meet the needs and wants of NWDC members, present and future. We are grateful for these dedicated volunteers and their commitment to NWDC.

Our Newsletter Editor Makes It Happen

The new newsletter format is so fresh and user friendly thanks to our intrepid newsletter editor, Lisa Flowers Ross. Not only is the newsletter easier to read and the graphics bright and clear, but you can now click on links and be directed to the information you need and the people you want to talk with. Over the summer, Lisa redesigned our newsletter in MailChimp, with help from Brian O'Neill, so that distribution is far more streamlined and the newsletter is better integrated with the Website. This was no small undertaking. Thank you Lisa. We appreciate the hours you dedicate every month to this all-important communication with NWDC members.



Under Construction

Work is still in progress on the website to set up a page, in the Member Access area, with the list of board members and volunteers and their contact numbers. In the past, this information has been contained at the end of the newsletter. Once this page is set up, there will be a link in this section in future newsletters to access this list.

In addition, there will be a page (or more) explaining how to submit information to the newsletter, our Facebook group, Facebook page and Instagram account.

October will feature Mixed Media on our Facebook Business Page. To post your featured or general information in the main section, please send short, focused, content, links and photos to Kristy Kun,

Any future NWDC Call for Entries will have a link in the newsletter to a page on the website that will have all the information you need. This will streamline the newsletter and make access to that information easier to find.

Member News Submissions

To submit member news for the November newsletter, please send an email **with information in the body of the email** to NWDCeditor@gmail.com **by October 15th** with the images in **jpg formats** at 72 dpi, around 700 pixels on longest side, **saved at maximum quality**.

Living Treasures

To make a donation to the Living Treasures project and/or to view all the current Living Treasures videos, please visit this [page](#).



[NWDC Website](#)



[NWDC Page](#)



[NWDC Members Group](#)



[Instagram](#)

Copyright © 2017 Northwest Designer Craftsmen, All rights reserved.

