

[View this email in your browser](#)



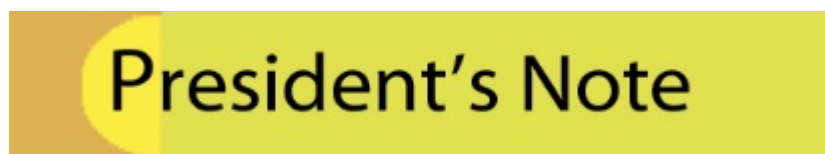
February 2018

---

Welcome to the February newsletter with lots of happenings, information and news.

***An important note:** When making inquires about information listed in the newsletter, please note the specific emails listed for your questions . If you just reply to the newsletter, then the editor gets the email and has to forward it on.*

Remember if you have **member news to submit for the March newsletter the deadline is February 15th**. Please send information in the body of an email to Lisa at [NWDCeditor@gmail.com](mailto:NWDCeditor@gmail.com). Images need to be in a **jpg format around 600 pixels** on the longest side. Please include titles and media for artworks.



## President's Letter

Most Friday mornings find me in a relaxed, peaceful state following a slow hour practice of yin yoga. Yin yoga takes long poses aimed at bringing deep stimulation and healing to the connective tissue of the body. It cultivates growing awareness of the unity of body and spirit. Recently as the class lay still in our last meditative pose, our teacher read from a Tao master, "As long as we engage life fully, we need not fear being separated from the essential current of life."

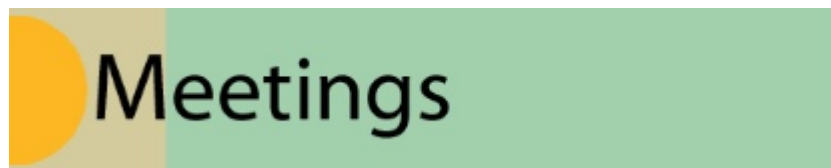
It's a bit of a stretch, but I thought of those words as I stood in front of 65 or so of our members at our Annual Meeting and Social. As Western artists, we are steeped in statements of intent and goals and sales. NWDC gives us a lot for our 50 bucks a year: education, exhibitions and events.

From my experience though, NWDC's highest value lies in our engagement with one another. You can feel that essential current in a room filled with us. There are greetings, good laughs and shared stories. Ideas and techniques pass from one craftsperson to another pushing each toward innovation and excellence. Opportunities are shared. Support is extended both professionally and as each of us faces disappointments, illnesses and loss. Out of that powerful current of creative exchanges come lifetime collaborations and friendships.

For those of you who have yet to engage fully in NWDC, there is much to be gained from leaving the solitude of studio to walk among those who are the best of the best practicing craft in the Pacific Northwest. Our members are awe-inspiring. For some of us, it can be hard to get involved. Obstacles seem more real than opportunity. All I can say is it's worth it to get engaged whether by connecting through our internet resources or driving the distance to reach a meeting. We'd all welcome the opportunity to know you better.

Patricia Resseguie, *NWDC President*

---



## Meeting Announcement

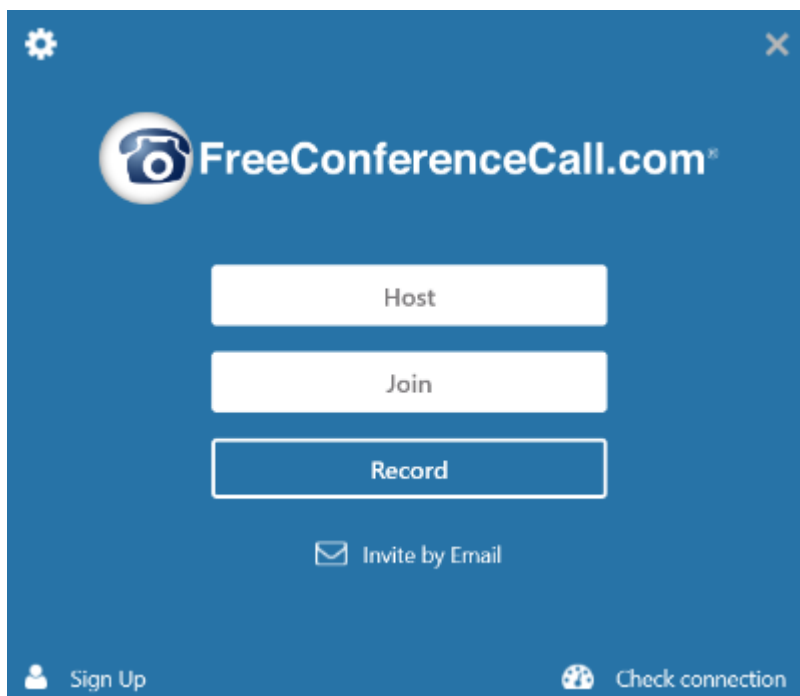
### Executive Committee Meeting By Video Conference

**Tuesday, February 6**

**3-4:30 pm PST**

The Quarterly Board Meeting has been delayed until March 6. Instead we will hold an Executive Committee Meeting to continue planning for upcoming events. All NWDC members are encouraged to attend Executive Committee and Board Meetings, both in-person meetings and those conducted by video. Please download FreeConference Call application that is best for your computer (Mac, PC or Linux) at <https://www.freeconferencecall.com/downloads>.

***It will be helpful if you notify [nwdcpresident@gmail.com](mailto:nwdcpresident@gmail.com) so that we know to expect you.***



For joining meetings:

**Join Online Meeting (PREFERRED METHOD):**

Online Meeting Link: <https://join.freeconferencecall.com/nwdcpresident>

**Online Meeting ID:**

**Dial In to the Conference (ALTERNATE METHOD):**

(United States): (563) 999-1081

**Access Code:**

**Instructions:**

At the scheduled date and time of the meeting, to join the online meeting, click the online meeting link and follow the prompts, OR dial in to the conference line, and when prompted, enter the access code followed by hash (#).

For detailed instructions on how to test the FreeConferenceCall.com app and make sure it's working for you, go to the Members Only page and click on the "[Video Conference Instructions](#)".



**Flourish at Seattle Center**  
**Barbara De Pirro**

De Pirro's installation, *Flourish*, includes over four thousand reclaimed plastic bottle caps that have been drilled then stitched into multi-color banners, each abstractly representing & celebrating the multicultural mix of people in our community.

Special thanks go to Office of Arts & Culture Seattle, Seattle Center and Alaska Airlines for highlighting & funding this project! More images here: <https://www.facebook.com/DePirroStudio/>



Barbara De Pirro  
*Flourish*  
Installation at the Seattle Center



## By Hand

### Lisa Flowers Ross

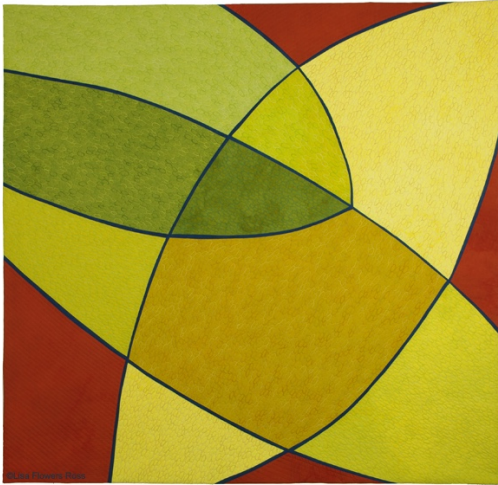
Two works by NWDC member, Lisa Flowers Ross, are on display in the *By Hand* exhibition at Blue Line Arts in Roseville, CA. *By Hand* is an international, biennial exhibition which includes a variety of media from glass and wood to fiber and others.

January 20 - March 3, 2018

[Blue Line Arts](#)

405 Vernon St, Suite 100

Roseville, CA



Lisa Flowers Ross  
**Leaf Stack #11**  
 hand-dyed fabrics, thread



Lisa Flowers Ross  
**Leaf Stack #14**  
 hand dyed fabrics, thread

---

## 50th Clay, Paper, Fiber, Glass, Metal, Wood

### Lisa Flowers Ross

The triptych, *Leaf Stack #19*, by Lisa Flowers Ross has been selected for inclusion in the 50th annual, all-media juried exhibition held at the Octagon Center for the Arts in Ames, Iowa.

January 26 - April 7, 2018

[Octagon Center for the Arts](#)

427 Douglas Ave

Ames, IA

**Opening Reception:**

January 26, 5-7 p.m.



Lisa Flowers Ross  
**Leaf Stack #19**  
hand dyed fabrics, thread

---

## Exhibitions

### Excellence in Fibers San Jose Museum of Quilts and Textiles

NWDC members, Liz Axford, Danielle Bodine, and Jan Hopkins, each have artwork and received awards in the Fiber Arts Now juried *Excellence in Fibers 2017, Winter 2017/18* edition of the magazine and will be in the exhibit, *Excellence In Fibers*, at San Jose Museum of Quilts & Textiles, San Jose CA.

Awards:

**Bodine's** artwork, *Moonlight Flight*, was the Category Winner for "Installation Works." Another of her works, *Celestial Dance*, is featured in the [online exhibition](#).

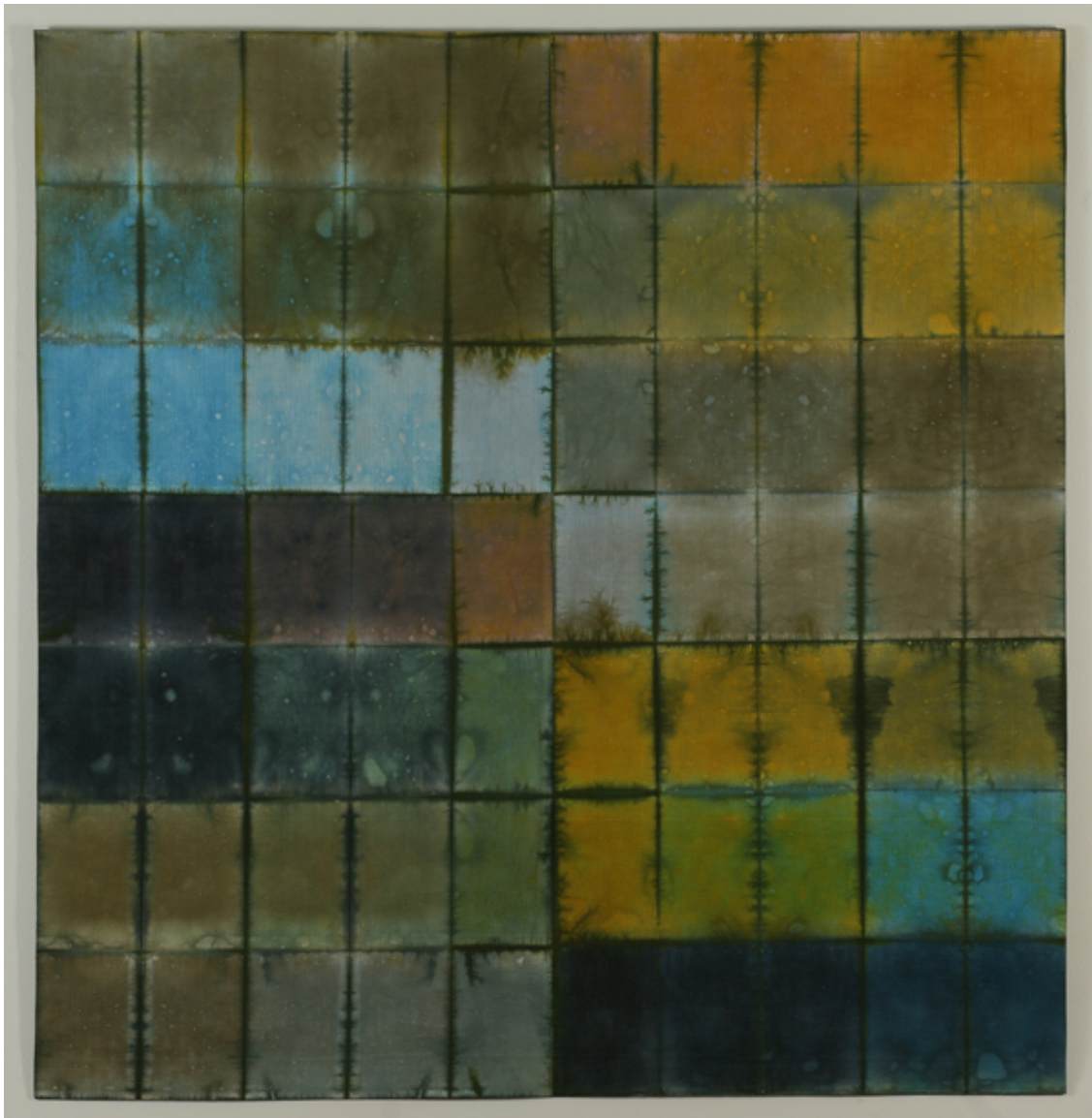


Danielle Bodine

***Moonlight Flight***

3'h x 6'w x 8"d installation

mulberry and recycled papers cast on basket, removed, reformed, painted, collaged,  
embellished and coiled objects



Liz Axford  
***Shift 3***

**Axford's** piece, *Shift 3*, was Category Winner for Wall/Floor Works.

**Hopkin's** artwork, *Sturgeon Moon*, (not pictured) was Category Winner for Vessel Forms/Basketry.

The *Excellence In Fibers* will run from Oct. 19 - Jan. 13, 2019 at the San Jose Museum of Quilts & Textiles, San Jose CA. Opening reception is Oct. 21, 2018.

---

## **All the World's a Stage Museo**

NWDC members, Danielle Bodine and Sara Owens, have works on display for the *All the World's a Stage* exhibition at Museo through Feb. 27th.



*"All the World is a Stage is an exhibit in collaboration with Island Shakespeare Festival. This group show will feature works by local artists inspired by the words and works of William Shakespeare."*

Museo

215 First Street

P O Box 548

Langley, WA 98260

360.221.7737

Hours: 11 a.m. - 5 p.m. Wednesday through Monday

---

## **Basketry Day - NWDC Quarterly Education Program Feb. 24 at Mt. Vernon and Bellingham**

***Make a scenic drive day of it with this line-up of Basketry Exhibitions,  
NWDC Naturally Speaking Panel and Social!***

Summary:

- Nancy Loorem Adams Solo Exhibition, Mt. Vernon Skagit Valley College  
Open 10 a.m. - 1 p.m.
- Whatcom Museum 3 Basketry Exhibitions (listed below)  
Open Noon - 5 p.m.
- NWDC Panel, Naturally Speaking, Whatcom Museum, 2 - 3 p.m.
- NWDC Social following panel, 3-4 p.m.

### **Nancy Loorem Adams Solo Exhibition**

## Nancy Loorem Adams

January 3 - March 2, 2018

Artist Talk: February 27th  
10:30 a.m. in Hodson Hall 211

Skagit Valley College  
Campus Center Art Gallery  
M - F: 10 a.m. - 4 p.m.

2405 East College Way  
Mount Vernon, WA 98273



Skagit Valley College in Mt Vernon

The gallery will be **open February 24th just for NWDC members and guests from 10:00 AM to 1:00 PM** for those traveling to Bellingham for the Northwest Designer Craftsmen Naturally Speaking Panel Saturday at 2 PM at the Whatcom Museum and THREE concurrent basketry exhibitions the Whatcom Musuem. (see below)

### **Naturally Speaking Panel: Northwest artists discuss fine art basketry in the 21st century Feb. 24, 2-3 p.m.**

#### **Old City Hall - 121 Prospect St.**

Northwest Designer Craftsmen (NWDC) present a moderated panel of internationally recognized Northwest fine art basketry artists. Panelists will respond to questions about their use of techniques, materials, and influences from moderator Layne Goldsmith, Fiber Arts Professor Emeritus, University of Washington. Panelists include Polly Adams Sutton, Jill Nordfors Clark, Katherine Lewis, Lanny Bergner, Charissa Brock, Dorothy McGuinness, Nancy Loorem Adams, Danielle Bodine, R. Leon Russell, Judy Zugish, and Bill Roeder. Reception to follow the event. Panel and reception included with admission (\$10 General, \$8 Senior 62+). Museum members are free.

**Note:** NWDC Members who do not intend to visit any of the exhibitions and "only" attend the panel and social, please RSVP to [NWDCRSVP@gmail.com](mailto:NWDCRSVP@gmail.com). NWDC will cover the admission for those members who wish only to attend the panel and the reception, and who do not wish to enter the exhibitions. Guests of members will be charged admission.

For more information, visit the Whatcom Museum [website](#).

## NWDC Social will follow Panel Discussion

Feb. 24, 3-4 p.m.

### Gathered Together:

### Work Celebrating the Northwest Basket Weavers Guild



NWDC Members included in the exhibition:

Katherine Lewis (Juror with Lisa Telford)

Danielle Bodine

Nancy Loorem Adams

Sharon Kita

Judy Zugish

Bill Roeder

Dorothy McGuinness

R. Leon Russell

Artwork pictured: *Before Print Copies Disappear* by Sharon Kita

**February 3 – May 6, 2018; Old City Hall**

View a selection of artwork at Old City Hall by members of the Northwest Basket Weavers Guild (NWBW) in an exhibition juried by Lisa Telford and Katherine Lewis, artists featured in *Rooted, Revived, Reinvented*.

Members of NWBW will be on hand on opening day to talk about basketry and the artwork on display. The NWBW, Vi Phillips Guild, began with a group of 16 people who loved to get together at Vi Phillips' house on Whidbey Island, Washington to make baskets and share information. These weavers used reed, cedar bark and root, sweet grass, pine needles, and other natural materials to make traditional baskets.

Thirty-five years later, the 180 guild members today weave both traditional and contemporary baskets. Several members are nationally known teachers and artists who have baskets featured in *Rooted, Revived, Reinvented: Basketry in America*.

### Rooted, Revived, Reinvented:

### Basketry in America

A visit to the Whatcom Museum provides a chance to see the traveling exhibition, *Rooted, Revived, Reinvented: Basketry in America*, **February 3 – May 6, 2018** at the Lightcatcher building in collaboration with the National Basketry Organization and The Museum of Art and Archaeology at the University of Missouri. This is the only West Coast venue of this exhibition.

NWDC members, Lanny Bergner, Katherine Lewis, Jan Hopkins Jill Nordfors Clark, Dorothy McGuinness and and new NWDC member Charissa Brock have work in the exhibition.

## **Hidden in a Bundle: A Look Inside the Whatcom Museum's Basketry Collection**

**February 3 – May 6, 2018**  
**Old City Hall**  
**Curated by Rebecca Hutchins,**  
**Curator of Collections**

Hidden in the Bundle features a selection of baskets from the Whatcom Museum's extensive Native American and First Nations collection. Representing different eras and cultures, the baskets showcase some unique, innovative, and even playful elements of design or decoration.



The viewer can explore these creative and practical adaptations while pondering the role of individual expression in the world of basket-making.

Artwork pictured: *Lidded basket*, Inuit. Gift of Dr. Gay Wickersham Davis.  
Whatcom Museum #2008.68.1.



## **Volunteers Always Needed**

If you think it's time – and it is – to get involved in NWDC, email [NWDCpresident@gmail.com](mailto:NWDCpresident@gmail.com). The President will listen to your interests and help you find a



place, whether it's as a Chair or a committee member. Volunteering is a terrific way to meet other NWDC members, make new friends and give back at the same time.

The following positions are open and waiting for you:

Education Chair

Scholarship Chair

Studio Visit Chair

Social Media/Publicity Chair

Volunteer Coordinator

Video Manager

Exhibition Installation Team

Graphic Designer: The Living Treasures Project and other committees of NWDC occasionally want to create ads and postcards. If you have graphic design skills, your help would be valued for adding graphic flair to these publicity vehicles. Please contact [nwdcpresident@gmail.com](mailto:nwdcpresident@gmail.com)

---

## Signing into the Website

### Helpful Hint

On the first member sign in page, always enter the password starting with "c" you'll find at the bottom of the newsletter. (We redact that password information from public versions of the newsletter.) Then sign in using your email address and personal password to access your roster information and to update your images.

### ***Still Wanting To Pay Your Dues?***

Here's the process step-by-step:

1. Log into [nwdesignercraftsmen.org](http://nwdesignercraftsmen.org)
2. Go to Members Only
3. Enter the password found at the end of the newsletter
4. Pull down the menu under Members Only and click on "Sign In."
5. Enter your email on record with NWDC.
6. Click on "ask for password."
7. Get password from your email and enter it. (If you log out of the Website, you must enter the password that begins with "c" to get back to the Member login. Then go to Members Only and sign in with your email and personal password.)
8. After you sign in, scroll almost to the bottom of the page. Click on the blue bar that says Renew, Upgrade or Update Billing. That takes you to where you can enter your credit card. (Click on the annual automatic renewal so you don't need to think about it in the future. You can always change back to annual billing if you choose.)
9. From the member login, you can also update your profile and change your password from the one initially provided by NWDC. While there, take a few minutes to upload images of your work or to update your images.

Questions? Email [nwdcpresident@gmail.com](mailto:nwdcpresident@gmail.com)

## What Happens After a Disaster? Information for Self-Employed Artists and Others

Below is a [link](#) to information about a webinar put together by Americans for the Arts. You don't have to pay to see this archived webinar (30mins long); you just have to create an account with ARTSU (Americans for the Arts).

"For several years, CERF+, the nation's leading nonprofit organization focused on safeguarding artists' livelihoods, has been pursuing a change in FEMA regulations to allow self-employed workers to be eligible for tool replacement under FEMA's Other Needs Assistance. Current FEMA regulations explicitly state that self-employed workers are ineligible for this important assistance. To be clear, we are talking about workers who work alone or with one or two assistants, such as musicians, carpenters, surveyors, photographers, craft artists, and more."

Listen to the [webinar](#) to learn more about what is being done to remedy this.

---

## NWDC Happenings Review

Here's What Happened Since the January Newsletter:

This is a new feature in the newsletter designed to let you know just how many activities take place every month to keep NWDC moving forward. Our dedicated volunteers make it happen!

- About 65 NWDC members enjoyed the Annual Meeting and Social at Factory Luxe. Our seven new members, the two honorary members and our new Lifetime member were introduced. An excellent potluck meal was enjoyed by all.
- Mark Ditzler gave an excellent and educational presentation about his work and the many innovations he created to make his work possible.
- Members at the Annual Meeting and Social were provided a flyer giving an update on all our anticipated 2018 programs.
- Five NWDC members provided gifts of their craft to outgoing officers.
- Thank you notes were written and given to our members who are outgoing Chairs and who helped with special projects.
- Early edits of the Ron Ho video were screened and feedback given to the video producer.
- The planning got underway for the premier of the Living Treasures Project video about Ron Ho.

- The exhibitions committee met to develop the prospectus for the Fall member show at the Washington State Convention Center. Other exhibition opportunities were explored. And work was initiated to assure that members can submit images for the show through the Website.
- Search for the venue for the May Image Bank image sharing program got underway.
- Coordination with the Society of North American Goldsmiths took place so that a memorial session will be held in honor of Ron Ho. NWDC may sponsor a reception at the event.
- Videos of previous Living Treasures presentations were delivered to the Cascade Museum in Edmonds for sale in conjunction with a retrospective show that includes work from several of our founding members.
- About 130 member dues were received and deposited, a process that sometimes required a series of emails to help members negotiate the new system.
- The new Officers were briefed and brought up to speed on all the software systems and organizational policies for NWDC. Software updates and fixes are constantly underway.

***Clearly, your help is needed. We offer a lot to our members. It cannot happen without volunteers to make it happen.***

---

## **New Ad Hoc Sub-Committee for Living Treasures Project**

### **Will Help Look to Future and a New Video Documentary**

The Living Treasures Video Committee (LTPC) has organized an *ad hoc* sub-committee tasked with selecting the subject of the next video documentary.

The *ad hoc* committee members are Peter Olsen, Miriam Works, Jan Koutsky, Cheryll Leo Gwin, Carol Milne and David French.

For an artist, or art advocate, to be considered for a Living Treasures Project video, he or she must meet the following criteria:

- Candidate does not have to be an NWDC member, but must be either an art advocate, or an artist working in clay, wood, glass, metal, fiber, and/or mixed media. Note: the committee is striving to establish a balanced representation among the categories in the video library.
- Candidate must be a leader; mentor of other artists, motivator, and innovator.
- Candidate must be capable of contributing to the documentary through first-person narration.
- Candidate's most influential period occurred within the NWDC membership area: Washington, Oregon, Idaho, Montana and Alaska.

- Candidate should not have been the subject of a previous documentary by any other organization.

The LTPC further recommends that the *ad hoc* Sub-Committee report their recommendation to the NWDC Board for discussion. That recommendation should include a short justification for their choice. The LTPC will then follow the final recommendation after Board approval.

The current Living Treasures Project Committee created a suggested list of candidates with input from NWDC members that includes art advocates/curators and artists working in ceramics, mixed media, and glass.

---

## Calendar of Events

### Upcoming

**February 6** – Executive Committee Meeting, 3-4:30 pm video meeting. Details about how to attend are elsewhere in the newsletter

**February 24** – Quarterly Program - Whatcom Museum in Bellingham. Details about the event are elsewhere in the newsletter.

**March 6** – Quarterly Board of Directors Meeting, 3-4:30 pm

**April 3** – Executive Committee Meeting, 3-4:30 pm

**April 15** – Premier of the Living Treasures Project's newest video about the late NWDC member and jeweler, Ron Ho - Seattle Central College Broadway Performance Hall

**May TBA** - Annual Image Bank Image Sharing Program

**May 23-26** – Events in conjunction with the international Society of N. American Goldsmiths' (SNAG) conference in Portland featuring the Living Treasures Project video on Ron Ho

**June - TBA** (Suggest what you would like to do!)

**July 21** – Studio Tour of NWDC member studios and Summer Social

**August** – Summer Break

**September** – Fall Quarterly Program TBA

**September 29, 2018 - January 6, 2019:** "Craft in the Pacific NW" NWDC exhibition at the WA State Convention Center

**Oct and Nov- TBA** (Suggest what you would like to do!)

**December** – Winter Break

---

## In Memoriam

### Honoring Harold Balazs

Harold Balazs, a celebrated Pacific Northwest artist, died on December 30 at the age of 89. Mr. Balazs is the subject of one of NWDC's Living Treasures videos. You can view it by



going to the NWDC Website and pulling down the menu for Living Treasures on the main page. [www.nwdesignercraftsmen.org](http://www.nwdesignercraftsmen.org)

Mr. Balazs was known for his large scale public works including a dramatic metal sculpture at the entrance of the Henry M. Jackson Federal Building in Seattle (not shown here). His enameled steel panels, called Rhododendrons, are near the entrance to the King County Administration Building. While Mr. Balazs was commissioned for work around the country, much of his work can be found in Spokane. It makes an indelible mark on that city.

Mr. Balazs graduated with a fine arts degree from Washington State University. He went on to create an incredible range of work including enamels, paintings, drawings, sculpture, and mixed media assemblages. He was recognized as a technical innovator with a strong will to experiment in order to create what he envisioned. His art was not only original but a sincere expression of who he was.

In the Living Treasures video, Mr. Balazs says, “The purpose of art is to create wonder.” The wonder of his work – and his zest for creation - will be missed.



Harold Balazs



Harold Balazs sculpture at Riverfront Park, Spokane.



## Mark Ditzler Presents

Mark Ditzler gave a 45-minute presentation about his work at the recent Annual Meeting and Social. It was an informative and interesting review of his progression from a ceramic artist to a glass artist, and how both disciplines inform his work. Mark has a very busy career fulfilling commissions, exhibiting in galleries and teaching. NWDC is grateful that he spent the time to put together an inspiring walk through his career.

## Noble Golden Puts on a Party

Noble Golden never fails to find great venues for our Socials. The Factory Luxe in the Old Rainier Brewery was no exception. Our members arrived to snacks on the clothed tables

with refreshments and food that tasted so good. Our thanks also go to Noble's husband Tim, who provides tremendous logistical support. And finally, thanks to our members who always please our palates with tasty potluck contributions.

## Thank You Marguerite Goff and Zia Gipson

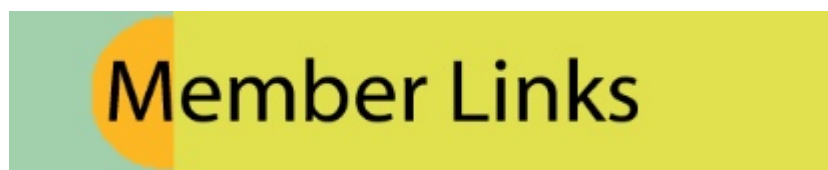
Marguerite Goff saw a notice in the newsletter asking for a volunteer to organize refreshments at our Quarterly Educational Programs. She acted on it, and we are grateful that she has taken on this responsibility. Thank her when you get a beverage and a snack at the February 24 Quarterly Education Program at the Whatcom Museum in Bellingham. And Zia Gipson volunteered to serve on the Exhibitions Committee. Thank you Zia!

## Thanks for Donations of Work

It has been tradition that some of our members donate pieces of their work as thank you gifts to our retiring officers. This year NWDC was proud to match the following retiring officers with gifts:

- President Julia Lowther received a pair of highly decorated coffee mugs from Stanwood, WA member Marguerite Goff.
- Co-President Lin McJunkin received a beautiful piece of stained glass from Seattle, WA member Dick Weiss.
- Secretary Liza Halvorsen received two delicate ceramic vessels from member Diane Gale, who resides in Port Townsend, WA.
- Treasurer Mark Ditzler received a slip cast ceramic vessel that included interesting, custom decals from Bellingham, WA member Robert Beishline.
- Treasurer Mary Hosick received beautiful coasters featuring the bold graphics of fiber artist Kathleen Probst, a member who resides in Eagle, ID.

Thank you to these very generous members.



### NWDC Board of Directors and Volunteer Staff

#### How To Reach Some of Your Officers and Chairs:

President Patricia Resseguie      [nwdcpresident@gmail.com](mailto:nwdcpresident@gmail.com)  
Vice President Nancy Loorem Adams      [nwdcvicepresident@gmail.com](mailto:nwdcvicepresident@gmail.com)  
Secretary Lin McJunkin      [nwdcsecretary1954@gmail.com](mailto:nwdcsecretary1954@gmail.com)  
Treasurer Gretchen Echols      [nwdctreasurer@gmail.com](mailto:nwdctreasurer@gmail.com)

Exhibitions Joyce Hayes [nwdcexhibitions@gmail.com](mailto:nwdcexhibitions@gmail.com)  
Membership Liz Axford [nwdcmembership@gmail.com](mailto:nwdcmembership@gmail.com)  
Email Blaster Brian O'Neill [nwdcgroup@gmail.com](mailto:nwdcgroup@gmail.com)  
Newsletter Editor Lisa Flowers Ross [nwdceditor@gmail.com](mailto:nwdceditor@gmail.com)  
Hospitality Noble Golden [nwdcrsvp@gmail.com](mailto:nwdcrsvp@gmail.com)  
Instagram Robert Beishline [nwdcinstagram@gmail.com](mailto:nwdcinstagram@gmail.com)

[Living Treasures Videos, Information and Donation Form](#)

MEMBERS:

[MEMBERS ONLY](#) portion of the NWDC website

PASSWORD:

[Members Directory](#)

[Log-in to your Member Profile](#)

You can edit your information on the website, change images, pay dues

FACEBOOK:

[NWDC Facebook Members Group](#)

[NWDC Facebook Page](#)

INSTAGRAM:

[NWDC Instagram](#)

Rob Beishline manages the Instagram account. Send images to

[nwdcinstagram@gmail.com](mailto:nwdcinstagram@gmail.com)



[NWDC Website](#)



[NWDC Page](#)



[NWDC Members Group](#)



[Instagram](#)

---

*Copyright © 2018 Northwest Designer Craftsmen, All rights reserved.*

Want to change how you receive these emails?  
You can [update your preferences](#) or [unsubscribe from this list](#).

