



12643 12th Ave. S. Seattle, WA 98168

2011 Calendar

Saturday, March 5th, 2011

Opening and social at
Matzke Fine Art
5-9pm
Stanwood, WA

March 5 – April 10, 2011

NWDC Invitational show
Matzke Fine Art
2345 Blanche Way
Camano Island, WA
www.matzkefineart.com

March 16, 2011

5:30 – 8:30 pm
Board meeting at Loren Lukens

April 20, 2011

7-9pm
How to Manipulate Digital Images
Lecture by Gordon Modin
Youngstown Community Center

May 2011

Paul Marioni lecture

June 2011

Social
TBD

September 2011

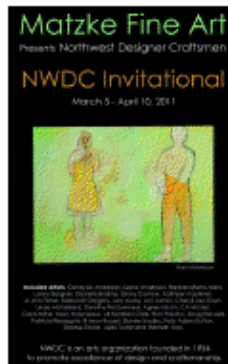
"Confluence"
Sept.-7-Oct.-29, 2011
Chase Gallery
Spokane City Hall –
Council Chamber Level
808 W. Spokane Falls Blvd.
Spokane, WA
Artist Opening: 10-7-11 7-9 pm

Northwest Designer Craftsmen

www.nwdc-online.org

March 2011

**OPENING AND SOCIAL AT MATZKE FINE ART
5-9 PM, 2345 BLANCHE WAY, CAMANO ISLAND, WA**



NWDC Invitational at Matzke Fine Art will be opening on Saturday March 5th. We are combining the opening with an NWDC social. It will be a potluck get together beginning at 5pm. You can come early and tour the gallery and sculpture garden and/or stay late until the gallery closes at 9. Come congratulate and celebrate with the NWDC artists in this show: **CANDYCE ANDERSON, DONA ANDERSON, BARBARA BARNES ALLEN, LANNY BERGNER, DANIELLE BODINE, GINNY CONROW, KATHLEEN FAULKNER, JO ANN FEHER, DEBORAH GREGORY, LARS HUSBY, LOIS JAMES, CHERYLL LEO-GWIN, JULIA LOWTHER, LINDA MCFARLAN, DOROTHY MCGUINNESS, AGNES MCLIN, CAMICHEL, CAROL MILNE, MARY MOLYNEAUX, JILL NORDFORS CLARK, RON PASCHO, DOUG RANDALL, PATRICIA RESSEGUIE, LEON RUSSELL, DENISE SNYDER, POLLY ADAM SUTTON, DELORES TAYLOR, JEAN TUDOR and HANNAH VOSS**

A little bit about Karla Matzke:

In 1983, Karla received her MFA from the University of New York at Albany. She is known as a hard edged realist painter, primarily using soft pastel. Also, she has several stainless steel sculptures in public art collections and plans to use her new space for more of these projects. She co-owned History of the World Fine Art Gallery with artist Jack Gunter on Camano Island for eighteen years. In 2008, her new gallery, **Matzke Fine Art Gallery and Sculpture Park** on Camano Island, WA. opened. The 3000 square foot Gallery features prominent and emerging American and International artists. The ten acre sculpture park features world class sculptures.



Directions:

<http://www.matzkefineart.com/location/>

I-5 exit 212, Head west towards Stanwood/Camano.

No turns until the LEFT on Blanche Way (approx. 20 miles from I-5) Continue up Blanche Way 600 ft. First driveway to the right, continue another 600 ft. Phone 360.387.275

2011 Calendar

Saturday, March 5th, 2011 Opening and social at Matzke Fine Art 5-9pm Stanwood, WA

March 5 – April 10, 2011 NWDC Invitational show Matzke Fine Art 2345 Blanche Way Camano Island, WA www.matzkefineart.com

March 16, 2011 5:30 – 8:30 pm Board meeting at Loren Lukens

April 20, 2011 7-9pm How to Manipulate Digital Images Lecture by Gordon Modin Youngstown Community Center

May 2011 Paul Marioni lecture

June 2011 Social TBD

September 2011 “Confluence” Sept.-7–Oct.-29, 2011 Chase Gallery Spokane City Hall – Council Chamber Level 808 W. Spokane Falls Blvd. Spokane, WA Artist Opening: 10-7-11 7-9 pm

Northwest Designer Craftsmen www.nwdc-online.org March 2011 Opening and Social at Matzke Fine art 5-9 pM, 2345 Blanche Way, caManO island, Wa

Directions: <http://www.matzkefineart.com/location/> I-5 exit 212, Head west towards Stanwood/Camano. No turns until the LEFT on Blanche Way (approx. 20 miles from I-5) Continue up Blanche Way 600 ft. First driveway to the right, continue another 600 ft. Phone 360.387.275

NWDC Invitational at Matzke Fine Art will be opening on Saturday March 5th. We are combining the opening with an NWDC social. It will be a potluck get together beginning at 5pm. You can come early and tour the gallery and sculpture garden and/or stay late until the gallery closes at 9. Come congratulate and celebrate with the NWDC artists in this show: C

ANDYCE

A

NDERSON

, D

ONA

A

NDERSON

, B

ARBARA

B

ARNS

A

LLEN

, L

ANNY

B

ERGNER

, D

ANIELLE

B

ODINE

, G

INNY C

ONROW

, K

ATHLEEN

F

AULKNER

, J

O

A

NN

F

EHER

, D

EBORAH

G

REGORY

, L

ARS

H

USBY

, L

OIS

J

AMES

, C

HERYLL

L

EO

-G

WIN

, J

ULIA

L

OWTHER

, L

INDA M

C

F

ARLAN

, D

OROTHY

M

C

G

UINNESS

, A

GNES

M

C

L

IN

, CA M

ICHEL

, C

AROL M

ILNE

, M

ARY

M

OLYNEAUX

, J

ILL

N

ORDFORS

C
LARK
, R
ON
P
ASCHO
, D

OUG R

ANDALL
, P
ATRICIA
R
ESSEGUIE
, L
EON
R
USSELL
, D
ENISE
S
NYDER
, P

OLLY A

DAM
S
UTTON
, D
ELORES
T
AYLOR
, J
EAN
T
UDOR
and H
ANNAH

V

OSS

A little bit about Karla Matzke: In 1983, Karla received her MFA from the University of New York at Albany. She is known as a hard edged realist painter, primarily using soft pastel. Also, she has several stainless steel sculptures in public art collections and plans to use her new space for more of these projects. She co- owned History of the World Fine Art Gallery with artist Jack Gunter on Camano Island for eighteen years. In 2008, her new gallery, Matzke Fine Art Gallery and Sculpture Park on Camano Island, WA. opened. The 3000 square foot Gallery features prominent and emerging American and International artists. The ten acre sculpture park features world class sculptures.

NWDC

Board of Directors

President: Megan Corwin
megan@mindspring.com

Vice President: Carol Mine
(206) 360-8743
carol@carolmine.com

2

Treasurer: Loren Lukens
llo@comcast.net

Secretaries: Phyllis King & Katherine
Helmreich
kingweaver@earthlink.net
kharitz@bellsouth.com

Education: Delores Taylor
425-788-0817
delores.taylor@mac.com

Exhibition Chair: Delores Taylor
425-788-0817
delores.taylor@mac.com

Archivist: Beth Wyatt
360-579-7888
bethwyatt@whidbey.com

Hospitality: ?

Membership: Joline El-Hai
(206) 354-8694
jblelhai@comcast.net

Newsletter Editor: Candyce Anderson
253-752-3456
candyce.anderson@gmail.com

Publicity: Trudee Hill
trudee@trudeehill.com

Website Liaison: Trudee Hill
trudee@trudeehill.com

Member at Large: ?

President's Message *Megan Corwin*

I want to thank you all for giving up your Sunday to join us for the important meeting at the Frye Art Museum. Many members shared their thoughts and feelings about fixing our broken jury process and the future of NWDC. The Board members clearly outlined the various approaches to accepting new members, fielding questions and encouraging members to participate. And thank you to the many members who emailed the board and myself before and after the meeting. The energy is high and the future looks encouraging as long as we all engage together to help NWDC operate.

We have collected all the responses and have sent out a Survey Monkey with the top two options identified for your vote. One is an open membership, and the other is an online jurying process. The board will take the results and revise the by-laws to accommodate the changes. We will ask you to vote once more on the by-laws before the summer.

A few members indicated an interest in working on some committees. However, no one has indicated an interest in serving on the board. Those who were at the meeting heard me explain that most of our board will need to be replaced in September 2011. We need members to step up and join the board right now to serve as members at large who will take over board positions when they have had some experience with how the organization operates. We need you. Please come and join us. Our next board meeting is on March 16th. Please email any board member for instructions on where and when. Check out the jobs lists that I have included in this newsletter to see if there is any need you can fulfill.

We have a number of exciting events coming up, and all kinds of ideas for improving operations and extending educational experiences. Many members wrote extensively about their suggestions, and the board is reviewing all those comments for future actions. Please keep them coming.

Megan

Northwest Designer Craftsmen

NWDC is a 501(c)3 non-profit organization.

Mission

Northwest Designer Craftsmen was founded in 1954 to promote excellence of design and craftsmanship and to stimulate public appreciation and interest in fine craft.

Artists in Washington, Oregon, Idaho, Montana and Alaska, who work professionally in clay, wood, glass, metal, fiber, and/or mixed media, are members. Other members support the crafts in the Pacific Northwest as educators, managers of non-profit arts organizations, or buyers of art for public or private collections.

Membership

Members are admitted twice yearly, through a review of applicants' slides and resumes. Artists interested in applying should request an application form from Membership Chair, Joline El-Hai, jblelhai@comcast.net, (206) 354-8694.

Newsletter

Monthly except July-August. Submit news by the 15th for submission in the next month's newsletter to Editor, Candyce Anderson.
candyce.anderson@gmail.com



NWDC Board of Directors

President: Megan Corwin nmegan@mindspring.com

Vice President: Carol Milne (206) 368-8743 carol@carolmilne.com

Treasurer: Loren Lukens llpots@comcast.net

Secretaries: Patti King & Katherine Holzknecht pkingweaver@earthlink.net khartiste@hotmail.com

Education: Delores Taylor 425-788-0817 delorestaylor@mac.com

Exhibition Chair: Delores Taylor 425-788-0817 delorestaylor@mac.com

Archivist: Beth Wyatt 360-579-7888 bethwyatt@whidbey.com

Hospitality: ?

Membership: Joline El-Hai (206)354-8694 jblelhai@comcast.net,

Newsletter Editor: Candyce Anderson 253-752-3456 candyce.anderson@gmail.com

Publicity: Trudee Hill trudee@trudeehill.com

Website Liaison: Trudee Hill trudee@trudeehill.com

Member at Large: ?

President's Message

Megan Corwin

I want to thank you all for giving up your Sunday to join us for the important meeting at the Frye Art Museum. Many members shared their thoughts and feelings about fixing our broken jury process and the future of NWDC. The Board members clearly outlined the various approaches to accepting new members, fielding questions and encouraging members to participate. And thank you to the many members who emailed the board and myself before and after the meeting. The energy is high and the future looks encouraging as long as we all engage together to help NWDC operate.

We have collected all the responses and have sent out a Survey Monkey with the top two options identified for your vote. One is an open membership, and the other is an online jurying process. The board will take the results and revise the by-laws to accommodate the changes. We will ask you to vote once more on the by-laws before the summer.

A few members indicated an interest in working on some committees. However, no one has indicated an interest in serving on the board. Those who were at the meeting heard me explain that most of our board will need to be replaced in September 2011. We need members to step up and join the board right now to serve as members at large who will take over board positions when they have had some experience with how the organization operates. We need you. Please come and join us. Our next board meeting is on March 16th. Please email any board member for

Northwest Designer Craftsmen NWDC is a 501(c)3 non-profit organization.

Mission Northwest Designer Craftsmen was founded in 1954 to promote excellence of design and craftsmanship and to stimulate public appreciation and interest in fine craft.

Artists in Washington, Oregon, Idaho, Montana and Alaska, who work professionally in clay,

wood, glass, metal, fiber, and/or mixed media, are members. Other members support the crafts in the Pacific Northwest as educators, managers of non-profit arts organizations, or buyers of art for public or private collections.

Membership Members are admitted twice yearly, through a review of applicants' slides and resumé's. Artists interested in applying should request an application form from Membership Chair, Joline El-Hai, jblelhai@comcast.net, (206)354-8694.

newsletter Monthly except July-August. Submit news by the 15th for submission in the next month's newsletter to Editor, Candyce Anderson. candyce.anderson@gmail.com

instructions on where and when. Check out the jobs lists that I have included in this newsletter to see if there is any need you can fulfill.

We have a number of exciting events coming up, and all kinds of ideas for improving operations and extending educational experiences. Many members wrote extensively about their suggestions, and the board is reviewing all those comments for future actions. Please keep them coming.

Megan

Suggestions from meeting responses and emails sent in:

NEW MEMBER PROCESS

Important to establish a minimum for the total number of votes tabulated at a given membership meeting.

Voting based on a point system, where the candidates' work is evaluated based on separate scores for design, concept, quality, etc.

Continue with voting but simplify it with a paper ballot.

Applicants' info online with a PDF ballot that could be printed out and mailed in with annual dues.

Voting could be once/year.

MEETINGS/COMMUNICATION

Teleconferencing to facilitate committee meetings

Simple email group program (free) like Posterous. <https://posterous.com/>

Yahoo groups: joint calendar with reminders, database to keep lists, polling, files section to post images or documents that belong to all.

GETTING NEW MEMBERS

Mentor students and invite them to apply.

Invitational exhibit where a member would invite a non-member and that would introduce more people to the group.

Go after young artists and mentor

Offer free memberships to arts advocates.

Membership category for non-artists that want to support NWDC, such as curators, gallery owners, etc.

Offer these carrots to new members: mentorship, sponsorship, advice, education

Advertise that we are looking for new members and list why it's a great deal to be in NWDC.

EXHIBITS

NWDC could raise its profile and reputation by partnering with the Bellevue Art Museum to sponsor an international craft show

More inclusive shows at larger venues.

OUTREACH

Arts & Heritage Bills in Olympia. NWDC should take a stand & join the many other arts organizations supporting this.

More effort in education in school workshops

Sponsor high school juried shows.

VOLUNTEERING ISSUES

Make it clear in applications that active participation is a requirement for being juried in. List what the job possibilities are & have a time limit/goal for getting involved.

Have a mentoring process for some jobs.

Linda McFarland volunteers to call new members and talk with those not participating.

Hire someone to do some of the work of the organization. Perhaps someone part-time to take some of the burden off of the Board.

Entice board members with reduced or free memberships.

MISCELLANEOUS

Change mission statement – add "other media" as a category.

The upcoming **NWDC Invitational** at Matzke Fine Art Gallery has been getting attention! The show was recently mentioned online in the American Style Magazine datebook as well as the Camano Community web site. The invitational was also featured in the March issue of Art Jewelry Magazine along with an image of "Pandora Series; Basic Black and Pearls" by Leon Russell.



3

NWDC Board Meeting Minutes Summary February, 2011

The NWDC board met on February 16th, and discussed the comments that came in from members after the January 30 meeting. There will be an online survey soon, to enable members to vote for their choice of options. We also discussed the upcoming exhibits, budget, and rewriting the Standing Rules and By Laws, to accommodate changes in the jury system.

Katherine Holzknacht and Patti King
Secretaries

General Meeting Video available

If you were not able to attend the January 30th NWDC General Members meeting, it is now available online for PC users. http://web.me.com/gordonmodin/NWDC_2/January_30_2010_Meeting.html. If you are unable to read the online version, or would simply like a copy of the DVD, please email: carol@carolmilne.com and she will snail-mail you a copy for \$5.

Advice? Opportunity?

Looking for anyone experienced in non-profit boards. Since it is so difficult to recruit board members, it might be time to restructure the makeup of our board. Any experienced advice would be appreciated.

Sincerely,
Carol Milne, VP

suggestions from meeting responses and emails sent in: NEW MEMBER PROCESS Important to establish a minimum for the total number of votes tabulated at a given membership meeting.

Voting based on a point system, where the candidates' work is evaluated based on separate scores for design, concept, quality, etc. Continue with voting but simplify it with a paper ballot. Applicants' info online with a PDF ballot that could be printed out and mailed in with annual dues. Voting could be once/year.

MEETINGS/COMMUNICAITON Teleconferencing to facilitate committee meetings Simple email group program (free) like Posterous. <https://posterous.com/> Yahoo groups: joint calendar with reminders, database to keep lists, polling, files section to post images or documents that belong to all.

GETTING NEW MEMBERS Mentor students and invite them to apply. Invitational exhibit where a member would invite a non-member and that would introduce more people to the group. Go after young artists and mentor Offer free memberships to arts advocates. Membership category for non-artists that want to support NWDC, such as curators, gallery owners, etc. Offer these carrots to new members: mentorship, sponsorship, advice, education Advertise that we are looking for new members and list why it's a great deal to be in NWDC.

EXHIBITS NWDC could raise its profile and reputation by partnering with the Bellevue Art Museum to sponsor an international craft show More inclusive shows at larger venues.

OUTREACH Arts & Heritage Bills in Olympia. NWDC should take a stand & join the many other arts organizations supporting this. More effort in education in school workshops Sponsor high school juried shows.

VOLUNTEERING ISSUES Make it clear in applications that active participation is a requirement for being juried in. List what the job possibilities are & have a time limit/goal for getting involved. Have a mentoring process for some jobs. Linda McFarland volunteers to call new members and talk with those not participating. Hire someone to do some of the work of the organization. Perhaps someone part-time to take some of the burden off of the Board. Entice board members with reduced or free memberships.

MISCELLANEOUS Change mission statement – add “other media” as a category.

general Meeting Video available

If you were not able to attend the January 30th NWDC General Members meeting, it is now available online for PC users. http://web.me.com/gordonmodin/NWDC_2/January_30,_2010_Meeting.html. If you are unable to read the online version, or would simply like a copy of the DVD, please email: carol@carolmilne.com and she will snail-mail you a copy for \$5.

Advice? Opportunity?

Looking for anyone experienced in non-profit boards. Since it is so difficult to recruit board members, it might be time to restructure the makeup of our board. Any experienced advice would be appreciated. Sincerely, Carol Milne, VP

The upcoming NWDC Invitational at Matzke Fine Art Gallery has been getting attention! The show was recently mentioned online in the American Style Magazine datebook as well as the Camano Community web site. The invitational was also featured in the March issue of Art Jewelry Magazine along with an image of “Pandora Series; Basic Black and Pearls” by Leon

Russell.

③

nWdc Board Meeting Minutes summary February, 2011

The NWDC board met on February 16th, and discussed the comments that came in from members after the January 30 meeting. There will be an online survey soon, to enable members to vote for their choice of options. We also discussed the upcoming exhibits, budget, and rewriting the Standing Rules and By Laws, to accomodate changes in the jury system.

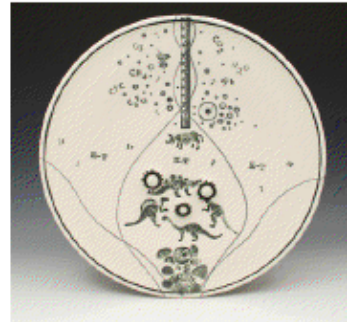
Katherine Holzknecht and Patti King Secretaries

Member News:

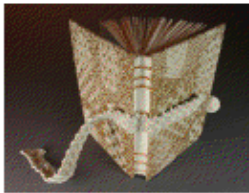
DON MYHRE will be showing work at Artexpo New York on Pier 94 in NYC March 25-27.



Don Myhre, "Probably One of my Uncles"
4,25" x 4,25" x 1,5" closed
mixed media: photo, suede, acrylic, alum



SAM SCOTT - www.samscottpottery.com is having a show of Black and White work at KOBO Gallery at Higo, in Seattle, Feb 19th—Mar. 6. The Gallery is in the International District, 604 South Jackson Street. <http://www.koboseattle.com/category/main.aspx>



Barbara Walker, "Woven, Cloven, Plied & Tied"

"Woven, Cloven, Plied & Tied" by NWDC member **BARBARA WALKER**, <http://www.barbarajwalker.com/>, and Alice Schlein of Greenville, SC, has been selected for National Fiber Directions Exhibition 2011 at The Wichita Center of the Arts, Wichita, KS, March 25 - May 8, 2011. The handwoven jacquard cloth cover and handbound book are by Alice; the ply-split band and 18-facet globe knot are by Barbara.

GINNY CONROW, <http://www.conrowporcelain.com/>, was the juror (along with John Tilton and Diane Creber) for the show "Crystalline Waves" at the Dunedin Art Center, near Tampa during NCECA 2011 (March 29-April 2). She will speak at the opening and be part of a symposium on new directions in Crystalline glazes at the conference.

She's spending October in Beijing, China with an artist residency at Red Gate Gallery, where she'll be working on new slab built forms and also has been invited to speak/demonstrate at the university.



Ginny Conrow
Large envelope form, 17"X17"X4"
Crystalline glazes on porcelain

Member News:

D

ON

will be showing work at Artexpo New York on Pier 94 in NYC March 25-27.

S

AM

Barbara Walker, "Woven, Cloven, Plied & Tied"

Don Myhre, "Probably One of my Uncles" 4,25",x4,25"x1,5" closed mixed media:photo,suede,acrylic,alum

"Woven, Cloven, Plied & Tied" by NWDC member B

ARBARA

W

ALKER

, <http://www.barbarajwalker.com/>, and Alice Schlein of Greenville, SC, has been selected for National Fiber Directions Exhibition 2011 at The Wichita Center of the Arts, Wichita, KS, March 25 - May 8, 2011 The handwoven jacquard cloth cover and handbound book are by Alice; the ply-split band and 18-facet globe knot are by Barbara.

G

INNY

C

ONROW

, <http://www.conrowporcelain.com/>, was the juror (along with John Tilton and Diane Creber) for the show "Crystalline Waves" at the Dunedin Art Center, near Tampa during NCECA 2011 (March 29-April 2). She will speak at the opening and be part of a symposium on new directions in Crystalline glazes at the conference.

She's spending October in Beijing, China with an artist residency at Red Gate Gallery, where she'll be working on new slab built forms and also has been invited to speak/demonstrate at the university. Ginny Conrow

Large envelope form, 17"X17"X4" Crystalline glazes on porcelain

M

YHRE

-www.samscottpottery.com is having a show of Black and White work at KOBO Gallery at Higo, in Seattle, Feb 19th—Mar. 6. The Gallery is in the International District, 604 South Jackson Street. <http://www.koboseattle.com/category/main.aspx>

S

COTT

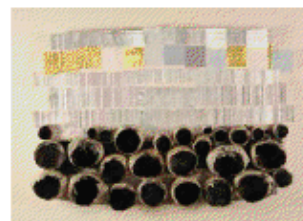
Member News (cont'd):

CJ HURLEY, www.cjhurley.com, created a new painting this past fall and donated the use of the art to the Architectural Heritage Center for their holiday cards, which were mailed to members and donors. The AHC had not had a budget for nice cards for several years and the response to CJ's work resulted in a significant increase in year-end donations. CJ submitted the painting for consideration at the Portland Art Museum's sales gallery and it was juried into the gallery in February and is currently on display and for sale. <http://portlandartmuseum.org/visit/sg/artists/CJ-Hurley/>



THE QUIETUDE OF WINTER
CJ Hurley, "The Quietude of Winter"
India Ink, Watercolor, and Acrylic
25" x 17"

DINA BARZEL will have new work at The Francine Seders Gallery March 4-27. Reception Sunday March 6, 2-4 pm Francine Seders Gallery. <http://www.sedersgallery.com/> 6701 Greenwood Avenue North Seattle, WA 98 013 (206) 782-0355



Dina Barzel

5



Dorothy McGuinness, "Citrus"
Materials: watercolor paper, acrylic paint
Size: 6x13x13"

DOROTHY MCGUINNESS has won the 2011 Niche award, professional, basketry division, sponsored by Niche Magazine. <http://www.nicheawards.com/category/winners/professional-winners/basketry-professional-winners/> and <http://www.nicheawards.com/2011-finalists/citrus-dorothy-mcguinness/>.

KATHERINE HOLTZKNECHT will be one of over 100 emerging and established artists exhibiting in the Northwest Art Alliance's 23rd annual Spring Best of the Northwest art and fine craft show, March 26 & 27 in the light-filled space of Hangar 30 in Seattle's Magnuson Park. http://www.nwartalliance.com/events/Spring_2011_Best_of_the_Northwest/



How to submit information about what you've been up to, to the NWDC newsletter:

With the NWDC newsletter moving to a digital format, information that you'd like to have included in the newsletter needs to be ready to layout. Here's a Q & A to help you make sure that what you provide is ready to include:

What's appropriate to include? Anything recent or upcoming about you and/or your art that you want NWDC members to know. For instance exhibits, classes/workshops, art or studio sales, studio space, opportunities, etc. would all be appropriate. Be sure to include basic information, i.e. who, what, why, when (dates and times), where (include city and state), how, etc. Website addresses are especially welcome. The newsletter can now link directly to them if you hover the cursor over a website or e-mail address and then click on it.

How should the text be formatted? In plain text, Arial font, size 10. Format it so it's ready to copy and paste into the newsletter. Please don't make us have to distill your info down to its essence. Attached documents are better, rather than in the body of the e-mail. Please use .doc format if sending a Word document instead of .docx format. Not everyone has Office 2008 yet, so .docx files can't be opened by folks using an older version of Word. Use correct punctuation. If it's not formatted correctly it will not be included.

What about images? We want images, but they must be formatted correctly. All images must be no larger than 350 pixels wide and high, 72 dpi, and must be jpeg format. Please include titles, medium, dimensions, etc.,

When does it need to get to candy? By the 15th of the month. In the subject box of your emails, please use "newsletter item."

, CJ H
URLEY

www.cjhurley.com, created a new painting this past fall and donated the use of the art to the Architectural Heritage Center for their holiday cards, which were mailed to members and donors. The AHC had not had a budget for nice cards for several years and the response to CJ's work resulted in a significant increase in year-end donations. CJ submitted the painting for consideration at the Portland Art Museum's sales gallery and it was juried into the gallery in February and is currently on display and for sale. <http://portlandartmuseum.org/visit/rsg/artists/CJ-Hurley/>

Member News

(cont'd)

CJ Hurley, "The Quietude of Winter" India Ink, Watercolor, and Acrylic 25" x 17"

how to submit information about what you've been up to, to the nWdc newsletter:

With the NWDC newsletter moving to a digital format, information that you'd like to have included in the newsletter needs to be ready to layout. Here's a Q & A to help you make sure that what you provide is ready to include: What's appropriate to include? Anything recent or upcoming about you and/or your art that you want NWDC members to know. For instance exhibits, classes/workshops, art or studio sales, studio space, opportunities, etc. would all be appropriate. Be sure to include basic information, i.e. who, what, why, when (dates and times), where (include city and state), how, etc. Website addresses are especially welcome. The newsletter can now link directly to them if you hover the cursor over a website or e-mail address and then click on it. How should the text be formatted? In plain text, Arial font, size 10. Format it so it's ready to copy and paste into the newsletter. Please don't make us have to distill your info down to its essence. Attached documents are better, rather than in the body of the e-mail. Please use .doc format if sending a Word document instead of .docx format. Not everyone has Office 2008 yet, so .docx files can't be opened by folks using an older version of Word. Use correct punctuation. If it's not formatted correctly it will not be included. What about images? We want images, but they must be formatted correctly. All images must be no larger than 350 pixels wide and high, 72 dpi, and must be jpeg format. Please include titles, medium, dimensions, etc., When does it need to get to candy? By the 15th of the month. In the subject box of your emails, please use "newsletter item."

▪
▪

K

ATHERINE

will be one of over 100 emerging and established artists exhibiting in the Northwest Art Alliance's 23rd annual Spring Best of the Northwest art and fine craft show, March 26 & 27 in the light-filled space of Hangar 30 in Seattle's Magnuson Park. http://www.nwartalliance.com/events/Spring_2011_Best_of_the_Northwest/

Dorothy McGuinness, "Citrus" Materials: watercolor paper, acrylic paint Size: 6x13x13"

H

OLTZKNECHT

B D

INA

ARZEL

will have new work at The Francine Seders Gallery March 4-27. Reception Sunday March 6, 2-4 pm Francine Seders Gallery. <http://www.sedersgallery.com/> 6701 Greenwood Avenue North Seattle, WA 98 013 (206) 782-0355

Dina Barzel

G D

OROTHY

M

C

UINNESS

has won the 2011 Niche award, professional, basketry division, sponsored by Niche Magazine. <http://www.nicheawards.com/category/winners/professional-winners/basketry-professional-winners/> and <http://www.nicheawards.com/2011-finalists/citrus-dorothy-mcguinness/>.

5

Member News (cont'd):

For Those Who've Been Wondering Where's Bonnie?

From: Bonnie Tarses
Sent: Thursday, February 24, 2011 10:26 PM

6

I am finally back home in Montana (after spending weeks in Baltimore attending my mother (Charlotte's) funeral and staying on to make sure that Joe (Charlotte's true love and longtime companion) was going to be OK.

I am so grateful that my mother lived long enough that I had the opportunity to completely heal our relationship. I am especially grateful to Joe who gave my mother the support and love (true love) that allowed the healing to take place. Of course, un-knitting cashmere sweaters together was a tremendously positive project; and as I survey the pounds of lovely yarn we created, I see this as Charlotte's real legacy to me (and to everyone who gets to wrap up in a woven piece created with this precious yarn)



Bonnie Tarses' mother, Charlotte, and Joe

My mother died at age 92 in the arms of her true love on February 2, 2011 of a massive heart attack. She had 6 great grandchildren (two of which spoke at her memorial). We should all be so lucky.

I would like to share the words I spoke at Charlotte's memorial service.

Recently I have begun to explore the path of Buddhism. When I shared this with my mother, she said "Oh no! I just got used to you being a vegetarian!"

We get to know our mothers from the inside out, so it is practically impossible to be objective. Hearing so many of Charlotte's friends talk about her from the outside in is a gift I will treasure almost as much as the 50 lbs. of cashmere yarn my mother and I created together over these last 5 years by taking apart some 200 old cashmere sweaters. The yarn which I call "Outstanding Moral Fiber" is a precious legacy woven in the countless meaningful hours we spent together un-knitting—following the thread miles and miles—all the way back to the beginning—not the end.



So many blessings--

Bonnie Tarses
An Artist Who Happens to Weave
bonnie@bonnietarses.com
www.bonnietarses.com
<http://weavingspirit.blogspot.com>
<http://inspiredbybonnie.blogspot.com>
406.471.7610

NWDC Membership Roster

Thanks, Rebecca for
updating the [membership
roster!](#)

JEAN HICKS' new phone
number is 206-914-4922.

NWDC bead artist LIZ MANFREDINI shares that she is chronically ill with the debilitating neurodegenerative disorder Multiple System Atrophy. MSA affects many of the autonomic body systems that people take for granted, and it is often misdiagnosed as Parkinson's disease or ALS. Her goal is to draw attention to this rare, currently incurable disease. With that in mind, she wants people to know that March has been designated as MSA Awareness Month, in order to increase public awareness and encourage research activities worldwide. For more information on Multiple System Atrophy please visit <http://www.MSAawareness.org>.

Member News

(cont'd)

:

For those Who've Been Wondering Where's Bonnie?

From: Bonnie Tarses Sent: Thursday, February 24, 2011 10:26 PM

6

I am finally back home in Montana (after spending weeks in Baltimore attending my mother (Charlotte's) funeral and staying on to make sure that Joe (Charlotte's true love and longtime companion) was going to be OK.

I am so grateful that my mother lived long enough that I had the opportunity to completely heal our relationship. I am especially grateful to Joe who gave my mother the support and love (true love) that allowed the healing to take place. Of course, un-knitting cashmere sweaters together was a tremendously positive project; and as I survey the pounds of lovely yarn we created, I see this as Charlotte's real legacy to me (and to everyone who gets to wrap up in a woven piece created with this precious yarn)

My mother died at age 92 in the arms of her true love on February 2, 2011 of a massive heart attack. She had 6 great grandchildren (two of which spoke at her memorial). We should all be so lucky.

I would like to share the words I spoke at Charlotte's memorial service.

Recently I have begun to explore the path of Buddhism. When I shared this with my mother, she said "Oh no! I just got used to you being a vegetarian!"

We get to know our mothers from the inside out, so it is practically impossible to be objective. Hearing so many of Charlotte's friends talk about her from the outside in is a gift I will treasure almost as much as the 50 lbs. of cashmere yarn my mother and I created together over these last 5 years by taking apart some 200 old cashmere sweaters. The yarn which I call "Outstanding Moral Fiber" is a precious legacy wound in the countless meaningful hours we spent together un-knitting—following the thread miles and miles—all the way back to the beginning—not the end.

So many blessings--

Bonnie Tarses An Artist Who Happens to Weave bonnie@bonnietarses.com
www.bonnietarses.com <http://weavingspirit.blogspot.com> <http://inspiredbybonnie.blogspot.com>
406.471.7610

NWDC bead artist L

I

M

ANFREDINI

shares that she is chronically ill with the debilitating

neurodegenerative disorder Multiple System Atrophy. MSA affects many of the autonomic body systems that people take for granted, and it is often misdiagnosed as Parkinson's disease or ALS. Her goal is to draw attention to this rare, currently incurable disease. With that in mind, she wants people to know that March has been designated as MSA Awareness Month, in order to increase public awareness and encourage research activities worldwide. For more information on Multiple System Atrophy please visit <http://www.MSAawareness.org>.

Bonnie Tarses' mother, Charlotte, and Joe

nWdc Membership roster

Thanks, Rebecca for updating the membership roster!

J

EAN

H

ICKS

' new phone number is 206-914-4922.

Exhibition News *Delores Taylor, Exhibition Chair*

The Exhibition Committee has a new yahoo group for anyone who wants to join the Exhibition Committee group. Go to yahoo.com and under groups search for NWDC_Exhibition_Committee. We'll have discussions on show themes, venues, etc and any member is welcome to join.

7

Upcoming NWDC Shows

September 2011

"Confluence"

Chase Gallery, 9-7-11 to 10-29-11

Spokane City Hall – Council Chamber Level

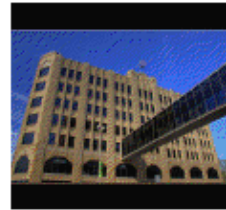
808 W. Spokane Falls Blvd.

Spokane, WA 99201-3333

(509) 625-6079

Show: 9-7-11 to 10-29-11

Artist Opening: 10-7-11 7:00 pm to 9:00 pm



Spokane City Hall

2012

March 2012

NWDC – NCECA

NW Gallery of Fine Woodworking

101 S. Jackson

Seattle, WA 98104

www.nwfinewoodworking.com

206 625-0542



Northwest Fine Woodworking

May 2012

"Touchables" ***

Maude Kerns Art Center

1910 East 15th Avenue

Eugene, OR 97403

(541) 345-1571

<http://www.mkartcenter.org/index.htm>

Show: May 25 – June 29, 2012

Artist Opening: May 25, 2012 6:00 pm – 8:00 pm



Maude Kerns Art Center

*** This show is still in the development stage so if you have a title suggestion or thoughts on the theme please e-mail delorestaylor@mac.com to form a committee and work on the theme for this show.

Delores Taylor, Exhibition Chair

The Exhibition Committee has a new yahoo group for anyone who wants to join the Exhibition Committee group. Go to yahoo.com and under groups search for NWDC_Exhibition_Committee. We'll have discussions on show themes, venues, etc and any member is welcome to join.

Upcoming NWDC Shows

September 2011 "Confluence" Chase Gallery, 9-7-11 to 10-29-11 Spokane City Hall – Council Chamber Level 808 W. Spokane Falls Blvd. Spokane, WA 99201-3333 (509) 625-6079 Show: 9-7-11 to 10-29-11 Artist Opening: 10-7-11 7:00 pm to 9:00 pm

2012

March 2012 NWDC – NCECA NW Gallery of Fine Woodworking 101 S. Jackson Seattle, WA 98104 www.nwfinewoodworking.com 206 625-0542

May 2012

"Touchables" *** Maude Kerns Art Center 1910 East 15th Avenue Eugene, OR 97403 (541) 345-1571 <http://www.mkartcenter.org/index.htm> Show: May 25 – June 29, 2012 Artist Opening: May 25, 2012 6:00 pm – 8:00 pm

*** This show is still in the development stage so if you have a title suggestion or thoughts on the theme please e-mail delorestaylor@mac.com to form a committee and work on the theme for this show.

Northwest Fine Woodworking

Maude Kerns Art Center

Spokane City Hall



CALL FOR ART

Northwest Designer Craftsmen Exhibit

"The Clay Edge"

NWDC Ceramic Artists at NW Gallery of Fine Woodworking
March 20 to April 8, 2012

8

NW Gallery of Fine Woodworking
www.nwfnewoodworking.com
101 S. Jackson
Seattle, WA 98104
206 625-0542

Inspiration for Show: NCECA (National Council on Education for the Ceramic Arts) Convention March 25 - 31 2012

Media: Open to All 2D and 3D work with clay as the primary material.

Show: Juried

Images Due: Images for National Publicity due 9/2/2011
Images for Regional Publicity due 1/8/2012

Dimensions of Pc: 9/2/2011 if you do not have images at that time you will need to advise the size; show space is limited and requires you advise the maximum size of your piece.

Image Size: 300 dpi Images of work representative of what will be produced

Number of Images: Up to 2 pcs with detail shots

Entry Deadline: **September 2, 2011**

Notice of Acceptance: September 17, 2011

Delivery of Artwork: 3/1 to 3/10/2012 To NW Gallery of Fine Woodworking

Set Up: 3/19/2012 10 to 4

Artist Reception: Opening of Show: March 20, 2012
March 29, 2012 5pm-9pm (artist presence requested)
De-installation 4/10 or 4/11/2012

Gallery Commission: 45% gallery and 55% artist

Insurance: Yes

Installation: NWDC to help provide pedestals as need

Publicity: Some images of show work needed by 9/2/2012.

Application Must Be Submitted by Mail and Include:

Documentation: Bio (one page)

1. Artist Statement (one pages)
2. CV or Artist Resume (two pages)
3. Title Page
 - Name of the Piece
 - Height, Width, Length of the work in inches or feet and inches
 - Date of Creation
 - Material/Media Information
 - Display Info (Wall Mount, Pedestal Mount, and security needs) and security needs
 - Retail Value of the Piece
4. Media and or materials & Methods:
5. Images on CD(image info: Halverson,Larry,_name of piece) **Please** use last name first
6. Photo credits

Mail CD To:
Larry Halverson
335 NW 51st Street
Seattle, WA 98107
206 781-1434

8

call FO r art Northwest Designer Craftsmen Exhibit

“the clay edge” nWdc ceramic artists at nW gallery of Fine Woodworking March 20 to april 8, 2012

NW Gallery of Fine Woodworking www.nwfinewoodworking.com 101 S. Jackson Seattle, WA 98104 206 625-0542

inspiration for show: nceca (national council on education for the ceramic arts) convention March

25 - 31 2012 Media: Open to All 2D and 3D work with clay as the primary material. Show: Juried images due: Images for National Publicity due 9/2/2011

Images for Regional Publicity due 1/6/2012 dimensions of pc: 9/2/2011 if you do not have images at that time you will need to advise the size; show

space is limited and requires you advise the maximum size of your piece.
image size: 300 dpi Images of work representative of what will be produced number of images Up to 2 pcs with detail shots entry deadline September 2, 2011 notice of acceptance: September 17, 2011 delivery of artwork: 3/1 to 3/10/2012 To NW Gallery of Fine Woodworking set Up: 3/19/2012 10 to 4

Opening of show: March 20, 2012 artist reception March 29, 2012 5pm-9pm (artist presence requested)

de-installation 4/10 or 4/11/2012 gallery commission: 45% gallery and 55% artist insurance: Yes installation: NWDC to help provide pedestals as need publicity: Some images of show work needed by 9/2/2012.

application Must Be submitted by Mail and include: documentation:Bio (one page)

Artist Statement (one pages) 1. CV or Artist Resume (two pages) 2. Title Page 3.

Name of the Piece · Height, Width, Length of the work in inches or feet and inches · Date of Creation · Material/Media Information · Display Info (Wall Mount, Pedestal Mount, and security needs) and security needs · Retail Value of the Piece · Media and or materials & Methods: 4. Images on CD(image info: Halverson,Larry_,name of piece) 5. Please use last name first Photo credits 6.

Mail cd to: Larry Halverson 335 NW 51st Street Seattle, WA 98107 206 781-1434

NWDC Board Position and Other Job Descriptions

President – current term possibly ends 9/2011

Lead all meetings, hold regular board meetings and communicate with board and membership directly and through the newsletter. 6-12 hours/month including meetings.

Vice President – current term possibly ends 9/2011

Responsible for procuring venues for NWDC events and coordinating with education and hospitality to see they proceed smoothly. Also, the keeper of the calendar and monthly reporter to newsletter of dates, venues and directions. Good communicator a must. 5-12 hours/month including meetings.

Treasurer/Financial – current term ends 9/2012

Collects dues, pays bills, reconciles checkbook with QuikBooks, presents regular financial reports, completes tax and filing fee forms, keeps Living Treasurers Books.

Recording Secretary (Shared Position) – one position ends 9/2011, other 9/2012

Take notes at meetings. Create draft minutes for review by board. Send final minutes to board and summary to newsletter. Archive minutes. One or both must attend all meetings. Hours per month vary.

Exhibitions – current term ends 9/2011

Encourage participation and volunteerism from the membership in carrying out of exhibitions. Secures, organizes and arranges exhibitions with the help of the Exhibition Committee. Hours vary depending on number of shows.

Education – current term ends 9/2011

Arrange four or more programs per year. These can be lectures, panel discussions, field trips, workshops, etc. Make sure all AV is in working order and that programs are correctly announced in newsletter. Hours depend on projects.

Membership – current terms ends 9/2011

Facilitates membership growth through directing new membership activities, managing active and prospective membership lists and recruiting new members.

Newsletter Editor – unknown end date

Produces monthly digital newsletter with Board generated information and reported activities of members. 1-2 days per month

Archivist-Formerly Historian – current terms ends 9/2012

Acts as liaison between the University of Washington's Pacific NW Special Collections Library curator and the membership of NWDC. Receives and stores ongoing submission to NWDC's archives. Prepares and delivers accessions to the archives at the UW.

Publicity – current terms ends 9/2011

Designs and distributes exhibition cards, posters, email blasts as well as local and national press releases. Works with Exhibition Chair and venue. Establishes publicity budget.

Members at Large

Come to board meetings. Participate in all discussions and votes. Average of 3-4 hours per month, depending on involvement with board programs.

Other Positions:

Volunteer Coordinator

Finds volunteers for various jobs associated with NWDC activities.

Nominations and Elections

Finds candidates for Board positions.

Exhibition Committee Member

Works with Exhibition Chair to set up and take down shows.

Publicity Committee Member

Works with Publicity Chair to send press releases, mail show cards, etc.

Webmaster

Rework the website to add headings and events, a calendar, etc.

Website updating and Liaison

Updating the website with new information. Working with webmaster to reform at web information.

Hospitality (can be shared)

Organizing food and drinks when necessary for meetings or educational programs. Brings nametags to membership meetings.

Photographer

Photograph events and educational programs for the newsletter.

Name Tag Designer

Currently filled positions to think about:

Roster and email blasts; snail mail newsletter distribution, electronic communication

We are also interested in starting a Calendar with not only NWDC events listed, but show entry dates and events of interest in all the states we represent.

President – current term possibly ends 9/2011

Lead all meetings, hold regular board meetings and communicate with board and membership directly and through the newsletter: 6-12 hours/month including meetings. Vice President – current term possibly ends 9/2011

Responsible for procuring venues for NWDC events and coordinating with education and hospitality to see they proceed smoothly. Also, the keeper of the calendar and monthly reporter to newsletter of dates, venues and directions. Good communicator a must. 5-12 hours/month including meetings.

Treasurer/Financial – current term ends 9/2012

Collects dues, pays bills, reconciles checkbook with QuikBooks, presents regular financial reports, completes tax and filing fee forms, keeps Living Treasurers Books. Recording Secretary (Shared Position) – one position ends 9/2011, other 9/2012

Take notes at meetings. Create draft minutes for review by board. Send final minutes to board and summary to newsletter. Archive minutes. One or both must attend all meetings. Hours per month vary. Exhibitions – current term ends 9/2011

Encourage participation and volunteerism from the membership in carrying out of exhibitions. Secures, organizes and arranges exhibitions with the help of the Exhibition Committee. Hours vary depending on number of shows. Education – current term ends 9/2011

Arrange four or more programs per year. These can be lectures, panel discussions, field trips, workshops, etc. Make sure all AV is in working order and that programs are correctly announced in newsletter. Hours depend on projects. Membership – current terms ends 9/2011

Facilitates membership growth through directing new membership activities, managing active and prospective membership lists and recruiting new members. Newsletter Editor – unknown end date

Produces monthly digital newsletter with Board generated information and reported activities of members. 1-2 days per month Archivist-Formerly Historian – current terms ends 9/2012

Acts as liaison between the University of Washington's Pacific NW Special Collections Library curator and the membership of NWDC. Receives and stores ongoing submission to NWDC's archives. Prepares and delivers accessions to the archives at the UW. Publicity – current terms ends 9/2011

Designs and distributes exhibition cards, posters, email blasts as well as local and national press releases. Works with Exhibition Chair and venue. Establishes publicity budget. Members at Large

Come to board meetings. Participate in all discussions and votes. Average of 3-4 hours per month, depending on involvement with board programs. Other Positions: Volunteer Coordinator

Finds volunteers for various jobs associated with NWDC activities. Nominations and Elections

Finds candidates for Board positions. Exhibition Committee Member

Works with Exhibition Chair to set up and take down shows. Publicity Committee Member

Works with Publicity Chair to send press releases, mail show cards, etc. Webmaster

Rework the website to add headings and events, a calendar, etc. Website updating and Liaison

Updating the website with new information. Working with webmaster to reformat web information. Hospitality (can be shared)

Organizing food and drinks when necessary for meetings or educational programs. Brings nametags to membership meetings. Photographer

Photograph events and educational programs for the newsletter. Name Tag Designer Currently

filled positions to think about: Roster and email blasts; snail mail newsletter distribution, electronic communication

We are also interested in starting a Calendar with not only NWDC events listed, but show entry dates and events of interest in all the states we represent.

9