



# Northwest Designer Craftsmen

[www.nwdc-online.org](http://www.nwdc-online.org)

December 2011

## Members' Only Site:

<https://sites.google.com/site/nwdesignercraftsmen>



## Thank You Lars!

Lars Husby, ceramics professor at Bellevue College, shared highlights of Mexico with a selection of images gathered from numerous visits to nearly every state in Mexico. As a result, those of us who have not traveled in Mexico were able to get a good visual sense of the depth and breadth of the Mexican culture, art, pottery, archeology, textiles, customs and more. In addition, we saw a variety of landscapes and climates and the art and architecture that has resulted. We were treated to the best from almost every one of the states of Mexico- coast to coast and north to south. We saw a wide variety of treasures from antiquity as well as present day culture festivals. It was a visual survey of some of the best of the best. My worldview and appreciation of the Mexican culture was very much expanded as a result. Thank you Lars.

## Holiday Party!

**SATURDAY, Dec 10. 2:00 -4:00**  
2007 NW 61st St, Seattle, 98107

Bring your fabulous self and your fabulous potluck dish and let's have the best party ever!

David Chatt is our host. Come see his surprising new work, enjoy his fantastic space and revel in the exquisite company of our great group!

January 22, 2012

Annual Members' Meeting  
2-4pm @ the Frye Art Museum

We will discuss various reports by board members, talk about the financial health of NWDC, and discuss how the new online voting went. We will honor new Lifetime members, introduce newly voted-in members with images of their work, and have a preview of the 'how to photograph 2D & 3D artwork' ('class on a CD') that is being produced for NWDC. Details coming in the January newsletter.

**February 8, 2012: NWDC Image Bank "Show & Tell" meeting in EVERETT at the Schack Art Center**  
Also featuring "Mesh" - **Lanny Bergner's** show in the Schack Gallery / 2921 Hoyt Ave., Everett, 98201

6-7 Board Meeting / NWDC members welcome in gallery to see "Mesh" with Lanny Bergner  
7-9 pm potluck & image Bank Show & Tell

This is indeed a special WOW! evening. We will see Lanny Bergner's inventive show, "Mesh", at the Schack Art Center Gallery. Then we will be sharing our own work & seeing the work of our fellow NWDC members in our annual "image Bank" show & tell while enjoying a pot luck. Looking forward to seeing everyone!

## Mark Your Calendars

Saturday, December 10, 2-4pm  
**Holiday Potluck** @ David Chatt's  
2007 NW 61st St. Seattle, 98107

Sunday, January 22, 2012  
2-4pm  
**Annual Members' Meeting**  
**Frye Art Museum, Seattle**

Wed. February 8, 2012  
6-7 board meeting  
7 pm Tour Lanny Bergner's  
show at the **Schack Art Center -**  
**Everett**, pot luck & image bank

Sunday February 19th 2pm  
NWDC lecture series at BAM  
**NCECA Panel Discussion**

Wed. March 14, 2012  
6-7 board meeting  
7-9 pm **Cameron Anne Mason**  
Phinney Neighborhood Center  
Community Hall

Wed. April 11, 2012  
6-7 board meeting  
7-9 pm **Margaret Ford**  
Phinney Neighborhood Center  
Community Hall

Sunday April 15, 2012 2pm  
NWDC lecture series at BAM  
**Patty Warashina**

Wed. May 9, 2012  
6-7 board meeting  
7-9 pm (being finalized)  
Phinney Neighborhood Center  
Community Hall

Wed. June 13, 2012  
6-7 board meeting  
7-9 pm **Mary Ann Peters**  
Phinney Neighborhood Center  
Community Hall

Sunday June 24, 2012 2pm  
NWDC lecture series at BAM  
**Lloyd Herman**  
The Evolution of Craft

**NWDC needs a President-elect** or someone to come onto the Board who is willing to train to be President. Megan is ending her term (absolutely!) at the end of December 2012. For an easy transition, it would be great to have a 'president elect' in training for six months or so (before the summer). Megan has done a superb job taking NWDC through bylaw rewrites, standing rules rewrites, and general reorganization of everything NWDC. We have a strong board, which will make the job of president a bit more smooth. Please give this some thought. We will be talking about this at our January Members' meeting on January 22 at the Frye Art Museum.

### Attention NWDC **dues** Paying Members

The NWDC has 162 dues paying members and 108 of you have paid your 2012 dues. Thank you very much. I ask that the **54 who have not yet paid would send a \$50 check**, made out to NWDC to:

Loren Lukens, treasurer  
4208 SW 100th St  
Seattle, WA 98146

Membership is delinquent  
after January 1, 2012  
Call or email if you have any questions.  
206-935-6740



## NCECA @ BAM

In 2012 the **National Council on Education for the Ceramic Arts** annual conference will be held in Seattle. Thousands of visitors will come to Seattle and the Pacific Northwest to see the best and brightest of contemporary ceramic work. Join Bellevue Arts Museum's own **Stefano Catalani**, UW Professor **Jamie Walker**, arts professional **Marge Levy**, and **Wally Bivins** Director of Pottery Northwest for a panel discussion and preview of the exhibitions and artists involved in this national event  
**Sun. February 19th 2pm at Bellevue Arts Museum**

## President's Letter

From Our President, Megan Corwin:

Hurrah! Online jurying is done and is a great success. We had 88 members responding – 3 times the average number of attendees at the Seattle new member jury meetings in the past. Thank you all for following through and voting.

Welcome and congratulations new members: Teresa Sullivan, Julia Rapinoe, Lin McJunkin, Gail Lurie, and Eva Funderburgh.

Our annual business and social meeting is coming up January 22 at the Frye Art Museum (same location as last year). Look for a more specific outline of meeting content in the January newsletter. Some of the things that will be happening: a power point presentation of our new members' work and new member introductions; Lifetime achievement awards (we will be sending a survey out soon for you to vote on the recipient); year end committee reports; and a peek at the CD's we have commissioned on how to photograph your work which will be available for free to all our members. As happened last year, you will be able to come up to the microphone and address the membership with thoughts, suggestions and concerns. We especially want to hear about your experience with the online voting. Let me know what else you would like to see at the annual meeting when we meet at David Chatt's wonderful home in Ballard during our holiday party. A little piece of news – I will be out of town teaching in Vermont (snow, beautiful snow) during the January meeting, so your delightful board will be running the show.

Many of you have served on the NWDC board and many of you are still in need of fulfilling your service piece of the NWDC membership pie. We have a couple of board positions that need to be filled now: the second Secretary and President-elect. I will be ending my position with NWDC December 2012. It's imperative that I train a replacement, as the president needs to understand every aspect of the organization. The hours are no longer daunting. We meet for 50 minutes a month with a 2-hour meeting in December and a retreat in the spring. Outside of that, I spend on average 4-6 hours a month communicating with the board, setting the agenda, writing the president's report and meeting with committees or individuals related to NWDC business. I am happy to serve for one more year and to train the incoming president. It's an exciting role and one that is constantly rewarding. Step up and join me in guiding NWDC into the future.

Megan Corwin

**Summary of the 11/9/11 board meeting:** The Deed of Gift to the UW Libraries document was approved, and a gift certificate to the Dahlia Lounge will be given to the lawyer who drafted it pro bono for NWDC. We talked about how the online voting is going with 43 votes in so far. We talked about introducing the new members at the January meeting, and the packet of info that will be given to them. There are still over 54 members who have not paid their dues yet! Dues fund the programs, exhibits and upcoming holiday party, **so please send your dues payment to Loren Lukens ASAP!**

## NWDC MEMBERS' NEWS

**Rosette “Posy” Gault** is working on a new book with the tentative title “Paper Clay Art and Practice” for A and C Black, London, with co publishers University of Pennsylvania Press in USA, forthcoming in late 2012. Over 150 artists in 34 countries contributed works for consideration with insight & visions with the medium that were not possible to create in the past with legacy ceramics.

Her art work and a paper, “The Potential for Ceramic Paperclay as a porous Material for Water Filtration in Developing Regions,” was presented and published at the Frolunda Culture House, Gothenberg Sweden in early March this year. Excerpts from a long 30 page illustrated report are appearing in series in the international Journal Ceramics Art and Perception: Technical. Issues 31(spring), 32 (fall- current issue) and 33 (forthcoming). Anyone interested in the full text of the entire article can email her at [rosette@rosettestudio.net](mailto:rosette@rosettestudio.net). This article documents the result of early stage testing of paperclay water filters in Nicaragua using Managua newsprint and the local clay and suggest some alternative methods for water filter design and manufacture with paperclay that offer promise for alternative design, cost savings, in context of sustainable materials research.

Also Rosette “Posy” Gault has been invited to lead a masterclass and 3 week symposium on Paperclay Porcelain at the International Ceramics Center in Keszket, Hungary in Sept 2012.

**Jean Tudor** has two works included in the 3ème biennale internationale des émaux d’art au Plessis-Pâté, France. The wall pieces are two of her Inuksuk studies: “Arctic Sentinels 2” and “Arctic Sentinels 3.”

**Jean Tudor** also has an installation of an enameled wall cross in a chapel at St. Timothy’s Episcopal Church, Houston, Texas.



**Jean Tudor’s** Inuksuk Studies: “Arctic Sentinels 2” left, and “Arctic Sentinels 3” right, are silver cloisonné on copper superimposed on background enameled sheets which have been raku fired.



**Jean Tudor’s** cross is made of vitreous enamel on copper, is 21 inches long and 14 inches wide, with a depth of 1 inch. The central inset has a silver cloisonné enameled Chi Rho symbol in black on a background of 24k gold foil inlay. The foil extends into the arms of the cross and is overlaid with transparent enamels.

# NWDC MEMBERS' NEWS



**Ginny Conrow** spent October in Beijing, China at an artist residency. She taught briefly at the university and spent a few days creating prototypes for/at a bone China factory in Zibo.

She recently exhibited in the Strictly Functional Pottery National where she won the *'best handbuilt award'*.



Ginny is teaching a 2-day hands on Crystalline workshop pre-NCECA and will have pieces in a few local shows during NCECA, including the Potter's Council Show at the Convention Center.

Lastly, she is curating a show during NCECA at the Azuma Gallery, 'Pacific Rim Connections' with work by 10 artists she's met in her travels to Australia, Thailand and China.

[www.conrowporcelain.com](http://www.conrowporcelain.com)

**Paul Lewing's Annual Holiday Show & Sale** has moved to his new studio in Shoreline. His tiles and paintings will be featured along with **Gay Jensen's** textile art, fashion accessories and note cards.

December 2nd, 4-9 pm  
December 3rd and 4th,  
10 am- 5 pm  
105 N 200th St. Shoreline 98133.

Call 206-801-7332 for directions or, for a map, go to  
[www.paullewingart.com/www.paullewingart.com/Contact.html](http://www.paullewingart.com/www.paullewingart.com/Contact.html)

At right: "Cutthroat Peak", wood-framed ceramic tile with china paint, 18" x 12"



# NWDC MEMBERS' NEWS



From **Lynn DiNino**:

This piece is in the Greater Community Foundation Artist-of-the-year nominees art exhibit (Jessica Spring won), which previewed on November 30. The show is part of the Showcase Tacoma series which utilizes vacant storefronts -this one is in the Chamber of Commerce building, 11th and Pacific Avenue, ground level, in Tacoma. You can see the works 24/7 from the sidewalk for the next few months!

My work, comprised of five 16" tall very round people, is titled "Pin a Dorito on an American". The inspiration comes from at least a couple of sources: my preoccupation with the fact that corn, a highly subsidized crop and used in almost ALL foods, may be the culprit in the mushrooming diabetes and obesity problems here in the United States. Also, I heard news that the creator of Doritos -the first chips made from

corn instead of potatoes - died a few months ago. And of course I've LOVED studying the physiques of rounder people: they're MUCH more fun to create as sculptures than skinny people!

These works use a paper mache medium, along with plaster, cement, wire, color wash and leather. Most pieces are cast from shapes I created and then morphed together.

My fellow nominees/exhibitors are Jennifer Adams, Sean Alexander, Nick Butler, Oliver Dorris, Kristin Giordano, Ellen Ito, Matt Johnson, Rick Lawson, Nicholas Nyland, Elise Richman, and Peter Serko -and this year's winner of course, Jessica Spring.



**Holiday Open House & Sale**  
 Preview Party on  
 Friday December 2, 4-9pm  
 Saturday December 3, 10am-5pm  
 Sunday December 4, 10am-5pm

Brace Point Pottery  
 4208 SW 100th St.  
 Seattle, 98146  
 206-935-6740

**NWDC members Loren Lukens and Cheryl DeGroot**, along with James Brook and Reid Ozaki  
**A Seattle Sampling Event**  
 Regular Hours: Tues. - Sat. 10-5  
[www.BracePointPottery.com](http://www.BracePointPottery.com)



# NWDC MEMBERS' NEWS

**Joline El-Hai**, through the program *Storefronts Seattle*, has created a window installation in Seattle's International District. Storefronts Seattle pairs accepted artists with vacant retail spaces for the purpose of turning otherwise unattractive empty storefronts into artworks.



“Twenty-five years of setting up my booth in art fairs has prepared me for this moment. I have always treated my booth as a small theater. For my storefront I have gathered funky odd old stuff from my friends’ basements (and from my own) and set up a dusty attic scene interspersed with my glowing fired glass and repurposed luggage pieces.”

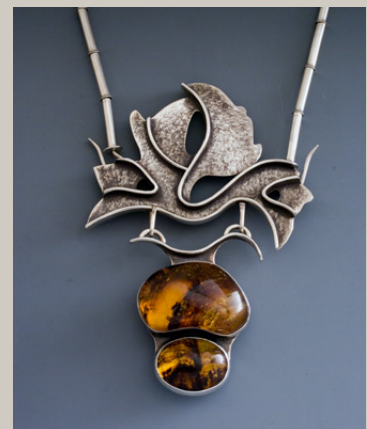
The installation, “A Light in the Attic,” is up until February 1 at 411 Maynard Ave. S. between Jackson and King streets.

Storefronts Seattle website: <http://storefrontsseattle.wordpress.com/>



**PUSHING BUTTONS:**  
sterling silver, brass, found  
Mother of Pearl buttons: 6  
inch array: 2010

**Irene Embrey** has two neckpieces included in the national exhibition:  
Mesa Contemporary Arts 33rd  
Annual Contemporary Crafts Exhibition.  
January 27 to March 18, 2012



**UNTITLED:**  
sterling silver, two pieces  
of Chiapas amber:  
21/4"x51/2"x1/2": 2009

# NWDC NEW MEMBERS

The results of our first online voting are in.  
NWDC is pleased to welcome these five new shining stars!  
Please welcome them at our January Members' meeting at the  
**Frye Art Museum Sunday January 22, 2-4pm.**  
A warm welcome to:

**Teresa Sullivan**  
**Julia Rapinoe**  
**Lin McJunkin**  
**Gail Lurie**  
**Eva Funderburgh**



Lin McJunkin  
[www.mcjunkinglass.com](http://www.mcjunkinglass.com)



Eva Funderburgh  
[www.evafunderburgh.com](http://www.evafunderburgh.com)



Gail Lurie  
[www.galeluriepotttery.com](http://www.galeluriepotttery.com)



Teresa Sullivan  
[www.teresasullivanstudio.com](http://www.teresasullivanstudio.com)



Julia Rapinoe



## Seattle Sampling

Ten NWDC Members are participating in Seattle Sampling  
December 2nd, 3rd & 4th. The Seattle Sampling web site -  
[www.seattlesampling.com](http://www.seattlesampling.com) - has complete details including  
samples of art, artists' names and maps.





Ongoing  
NWDC  
Shows

“**The Clay Edge**” March 20, 2012 to April 22, 2012  
NWDC Ceramic Artists at NW Gallery of Fine Woodworking  
[www.nwfinewoodworking.com](http://www.nwfinewoodworking.com)

101 S. Jackson  
Seattle, WA 98104  
206 625-0542

Store hours: Tuesday - Saturday 10:30 AM to 5:30 PM / Sunday 12- 5 PM Mondays- Closed

Images for Regional Publicity January 1, 2012

Opening of Show: March 20, 2012

Artist Reception March 29, 2012 5 pm-9pm (artist presence required)

De-installation April 22 or 23rd

NWDC Show “**Touchable**” at the Maude Kerns Art Center  
May 25, 2012 to June 29, 2012

<http://www.mkartcenter.org/>

191 East 15th Avenue  
Eugene, OR 97403  
(541) 345-1571

The inspiration for this show is work that is touchable, and will include sample pieces by each artist that can be “touched” by show visitors.

Delivery of Artwork: May 16, 2012 10am – 5pm

Opening of Show: May 25, 2012

Artist Reception May 25, 2012 5pm – 9pm

De-installation Monday, October 31, 2011 8am-finished

Gallery Hours: Monday to Friday: 10.00 AM - 5.30 PM, Saturday: 12.00 PM - 4.00 PM

Transitions with our Exhibitions Chair

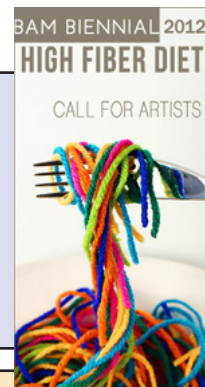
THANK YOU!

We want to thank **Delores Taylor** for all her hard work as our Exhibitions Chair. We appreciate your time and dedication to NWDC and all that you have done for us!

WELCOME!

And... We want to welcome **Ron Pascho**, our new Exhibitions Chair. We are pleased to have you back on the board and appreciate your willingness to help our group.

## Call For Entry

**BAM Biennial 2012: High Fiber Diet**

CALL FOR ENTRIES

Submission Deadline: **December 15, 2011**

Exhibition Dates: October 25, 2012 – February 24, 2013

Prospectus:

[http://www.bellevuearts.org/resources/exhibition/BAM\\_Biennial/Prospectus.pdf](http://www.bellevuearts.org/resources/exhibition/BAM_Biennial/Prospectus.pdf)**Clay? IV Kirkland Arts Center Exhibition****March 26 - May 19, 2012**

Juried by University of Washington, School of Art Professors Doug Jeck, Jamie Walker, and Akio Takamori

**Deadline for Entries: Sunday, January 8, 2012**

Kirkland Arts Center is proud to present the fourth installment of its biennial contemporary ceramics exhibition, Clay? IV in conjunction with the National Council on Education for the Ceramic Arts' (NCECA) 46th annual conference in Seattle, Washington. Juried by University of Washington, School of Art Professors Doug Jeck, Jamie Walker, and Akio Takamori, Clay? IV explores the versatility of clay as a medium of expression. Showcasing a range of sizes, scales, subject matter, and techniques, the artwork of this exhibition is both a testament to the enduring legacy of clay and to the future of the field.

Online Application & Information: <http://www.formstack.com/forms/?1122093-kpTQlzQtwg>**18th Annual Benefit: Juried Show and Sale Wearable Art**

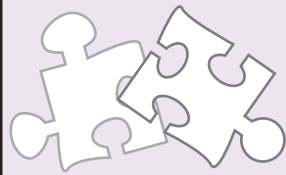
The YWCA RAGS Guild announces a call for entries for its 18th annual juried wearable art show and sale. The RAGS 2012 event will take place **March 9-11, 2012** at the new Larson's Mercedes-Benz of Tacoma in Fife: 1701 Alexander Ave. East in Fife. THE RAGS GUILD urges everyone to make a note of the venue change for the March event.

RAGS is open to all artists working in all media of wearable art garments, fashion accessories and jewelry. Two entry types with nonrefundable fees are accepted:

- Gallery - competition of one-of-a-kind artist made pieces (\$15 per entry up to three entries)
- Marketplace - boutique style sale (\$35 entry fee)

All initial entries are juried from digital images. Accepted gallery entries are judged for award from actual works in late February 2012. Cash prizes are awarded to gallery winners in garments, accessories / jewelry, and best of show. To support the domestic violence prevention and intervention programs of the YWCA Pierce County, RAGS retains 33% of sales in the Marketplace and 40% of sales in the Gallery.

**Deadline for submitting digital images is December 16, 2011.** For prospectus and entry form, visit [www.ragswearableart.org](http://www.ragswearableart.org), or send an SASE to Artist Coordinator, YWCA RAGS Guild, 405 Broadway, Tacoma, WA 98402. For more information, call the RAGS hotline at 253-272-4181 ext. 352



**Puzzling...  
...isn't it?**

### Ask the Geek



How do we resize those digital images to prepare them for all those submissions? Frustrating, isn't it? How to do it easily?

Artist Gloria Hansen has made the perfect little video for you. It can be found at:

<http://www.gloriahansen.com/weblog/>

Please.... check it out and pass it along to others in need - as a holiday treat.

Do you have a geeky question? E-mail [jankoutsky@comcast.net](mailto:jankoutsky@comcast.net)

### Are you enjoying the NWDC Newsletter? It could be better with two things:



Thing One: A BIG “Thank You” to Polly Adams Sutton, Ginny Conrow and Natalie Olsen who agreed to help as our newsletter proofreaders!

Thing Two: **Still looking** for a GOOGLE CALENDAR person. The calendar is set up:

<https://sites.google.com/site/nwdesignercraftsmen/>

We just need someone to enter the info. No need to come to any meetings! Just read the newsletter and plug in the dates. As easy as pie! Interested?

Please contact Jan Koutsky [jankoutsky@comcast.net](mailto:jankoutsky@comcast.net)



### How to submit information to the NWDC newsletter

**The deadline is the 15th of the month** for the next month's newsletter. What is appropriate to submit? Anything in your professional life you would like to share with NWDC members: exhibits, awards, classes, art or studio sales, studio space, opportunities, call for entries, etc. Be sure to include all the information: who, what, when, where & why.

**How should it be formatted?** Please send your information in plain text. It can be either in an attached “Word” document, or in the body of an e-mail. The newsletter editor will copy / paste. Please, do NOT send PDF files or jpeg copies of gallery post cards! The newsletter editor cannot copy / paste from PDFs and JPEGs.

**What about Images?** We want images! They need to be in jpeg format, 72 dpi, about 400 pixels on the longest side. Please include name, title, medium, dimensions, etc.

Website addresses are great too. Because our letter is electronic, those web site addresses will become clickable links.

**The deadline is the 15th of the month.** Send to Jan Koutsky: [jankoutsky@comcast.net](mailto:jankoutsky@comcast.net)

Please put “NWDC Newsletter” in the subject line.

# NWDC Board Members

These are the members who volunteer their time every month to make it all happen. Please be sure to say 'thanks' when you see them at meetings and parties.

**President** - Megan Corwin - [nmegan@mindspring.com](mailto:nmegan@mindspring.com) 206-781-2646

The President presides over all meetings & conducts business, holds all documents of the group, leads the board, is alert to the membership and creates forums for discussions & goals, temporarily replaces board members who leave mid-term.

**Vice President - Interim** - Rosette Gault - [rosette@rosettestudio.net](mailto:rosette@rosettestudio.net) 206-284-7805

The Vice President schedules programs, works closely with education chair to organize programs of interest to members, finds location for meetings, provides information to the newsletter, arranges payment to speakers, makes sure events run smoothly.

**Secretary** - Katherine Holznecht - [khartiste@hotmail.com](mailto:khartiste@hotmail.com) 425-481-7788

The Secretary records minutes at board meetings, requests electronic copies of committee reports to compile an accurate record of the NWDC business, writes a draft of minutes for approval of the board, writes a summary for the newsletter, the final version is sent out, printed and saved to a flashdrive for the archives.

**Treasurer** - Loren Lukens - [llpots@comcast.net](mailto:llpots@comcast.net) 206-935-6740

The treasurer collects & deposits dues, pays bills, keeps & reconciles the budget, presents regular financial reports to the board, prepares a yearly budget, completes tax and filing fee forms, is liason with investment management company, works with accountant when necessary.

**Archivist - VACANT** The Archivist acts as liason between NWDC & UW Pacific NW Special Collections Library, receives & stores submissions to NWDC archives, takes care of archival printing & binding of the NWDC newsletters, prepares and delivers any further NWDC submissions to the UW Pacific NW Special Collections Library.

**Education** - Lin Holley - [lin@palmstogether.net](mailto:lin@palmstogether.net) 206-322-7593 & David Traylor - [studio@dirtcircus.com](mailto:studio@dirtcircus.com) 206-706-5901

The Education Chair arranges yearly programs, works with VP to secure locations, arranges AV equipment, makes sure the VP gets the publicity into the newsletter, works with Education Publicity Chair to publicize programs.

**Exhibitions** - Delores Taylor - [delores@artglassconcepts.com](mailto:delores@artglassconcepts.com) 425-788-0817 & Ron Pascho [rpjh1@frontier.com](mailto:rpjh1@frontier.com) 425-788-081

The Exhibition Chair Secures NWDC exhibition opportunities, organizes and works with teams to ensure the logistics for exhibitions. Encourages member participation, maintains a well-rounded committee, attends board meetings, handles exhibition budgets, coordinates with publicity.

**Hospitality** - Lois Harbaugh - [lois.harbaugh@gmail.com](mailto:lois.harbaugh@gmail.com) 425-454-0098

The Hospitality Chair helps us with our parties by getting them organized, sends the information to the newsletter, and communicates with other members of the board as needed.

**Membership** - Joline El-Hai - [jblelhai@comcast.net](mailto:jblelhai@comcast.net) 206-354-8694

The Membership Chair processes new member applicants, creates Powerpoint online ballot, tallies ballots and announces new members, advises applicants of result of jurying process, introduces new members at the Annual Membership Meeting, maintains current membership lists, emails NWDC information to members, develops communications materials regarding membership application.

**Newsletter** - Jan Koutsky - [jankoutsky@comcast.net](mailto:jankoutsky@comcast.net) 206-935-2306

Proofreaders: **Polly Adams Sutton, Ginny Conrow & Natalie Olsen** The Newsletter Editor receives items from members by the 15th of the month, compiles the newsletter, sends a preview to proofreaders for final editing, sends the final version to the Membership Chair for distribution to NWDC members.

**Publicity** - Trudee Hill - [trudee@trudeehill.com](mailto:trudee@trudeehill.com) 310-908-6675

The Publicity Chair works with the exhibitions chair to publicize NWDC shows, organizes gallery/venue press releases at regional & national level, maintains a budget, communicates with members, maintains database of press release contacts, sets deadlines for when images are due for press, works with publishers on post cards, brochures, etc., proofs prepress, works with Education chair as necessary.

**Roster / Data Base - Vacant** - The Roster - Database Chair maintains current member list with contact information in a database and hard copy, updates all changes to individual records, supervises the creation of the annual 'Membership Directory'.

**Web Liason** - Trudee Hill - [trudee@trudeehill.com](mailto:trudee@trudeehill.com) 310-908-6675

The Website Liason receives updates for web site and works with web master to ensure the NWDC site is current, reviews bill from web developer and forwards to the treasurer, presents updated reports to the board, places periodic updates in the NWDC newsletter, works with committee chairs, updates content on site, occasionally asks for input from board & members to improve NWDC website.

**Image Bank** - Lanny Bergner - [lbergner@wavecable.com](mailto:lbergner@wavecable.com) 360-229-0514

Paul Lewing pg. 5  
Loren & DeGroot pg. 6

Lewing pg 5  
Loren & DeGroot pg.6

**DECEMBER**

|    |    |    |    |                                                             |                                                                                                    |                                                                                            |
|----|----|----|----|-------------------------------------------------------------|----------------------------------------------------------------------------------------------------|--------------------------------------------------------------------------------------------|
|    |    |    |    | 1                                                           | 2                                                                                                  | 3                                                                                          |
|    |    |    |    |                                                             | Seattle Sampling<br>4-9 pm<br><a href="http://www.seattlesampling.com">www.seattlesampling.com</a> | Seattle Sampling<br>10am-5pm                                                               |
| 4  | 5  | 6  | 7  | 8                                                           | 9                                                                                                  | 10 2:00 - 4:00<br>Holiday Potluck<br>at David Chatt's<br>2007 NW 61st St.<br>Seattle 98107 |
| 11 | 12 | 13 | 14 | 15 "High Fiber"<br>due at BAM<br><br>Newsletter<br>Deadline | 16<br>Deadline for<br>wearable art<br>jury                                                         |                                                                                            |
| 18 | 19 | 20 | 21 | 22                                                          | 23                                                                                                 | 24                                                                                         |
| 25 | 26 | 27 | 28 | 29                                                          | 30                                                                                                 | 31                                                                                         |

|                                                                |    |    |                     |    |    |    |
|----------------------------------------------------------------|----|----|---------------------|----|----|----|
| 1                                                              | 2  | 3  | 4                   | 5  | 6  | 7  |
| 8                                                              | 9  | 10 | 11                  | 12 | 13 | 14 |
| 15<br><br>Newsletter<br>Deadline                               | 16 | 17 | 18                  | 19 | 20 | 21 |
| 22 2-4pm<br>Annual Mem-<br>bers' Meeting<br>Frye Art<br>Museum | 23 | 24 | 25                  | 26 | 27 | 28 |
| 29                                                             | 30 | 31 | <b>January 2012</b> |    |    |    |