



12643 12th Ave. S. Seattle, WA 98168

2011 Calendar

Tuesday, February 1, 2011

Images due for "Confluence"
Chase Gallery – Spokane, WA
Show Dates: 9-7-11 to 10-29-11

Friday, February 18th

6:30 -7:30 pm lecture
Marci McDade, editor of *Fiberarts* magazine, at Bellevue Arts Museum

Sunday, February 27, 2011

1-4pm
Image Bank
Shoreline Public Library

Saturday, March 5th, 2011

Opening of NWDC Invitational Show
and social at Matzke Fine Art
2345 Blanche Way
Camano Island, WA
www.matzkefineart.com
Show continues thru April 10, 2011
www.matzkefineart.com

April 20, 2011

7-9pm
photoshop lecture
with Gordon Modin
Youngstown Community Center

Northwest Designer Craftsmen

www.nwdc-online.org

February 2011

TWO EVENTS IN FEBRUARY:

MARCI MCDADE, EDITOR OF FIBERARTS MAGAZINE, LECTURE AT BELLEVUE ARTS MUSEUM, FEBRUARY 18, 6:30 P.M., AND NWDC'S ANNUAL SHOW & TELL AT THE SHORELINE PUBLIC LIBRARY, FEBRUARY 27, 2011, 1-4 P.M.

Join Marci Rae McDade, editor of *Fiberarts* magazine, to learn about the humble beginnings of one of the world's most influential textile arts publications, in print for over thirty-five years that covers artists working with a wide range of fiber materials and techniques, news from the fiber field, trends, creative processes, exhibition and book reviews. McDade will discuss the magazine's guiding mission to promote exceptional recent works of art made with a vast array of fiber materials and techniques including basketry, conceptual craft, needle arts, quilting, soft sculpture, wearable art, and much more. Highlights of important artists promoted in print over the last thirty-five years will inform the past, present, and future editorial direction of *Fiberarts*.



In addition to an informed overview of the contemporary fiber arts field, McDade adds to her perspective with a decade of experience as a successful independent curator and exhibiting maker of 2d and 3d fiber artwork. She received her MFA from the School of the Art Institute of Chicago's department of fiber and material studies and has a BA in film and video production from Columbia College Chicago. In 2007 she was the Emerging

Fiber Artist-in-Residence at the Oregon College of Art and Craft in Portland, Oregon, where she now lives. For artists in attendance, McDade will also provide tips to create attractive and engaging submission packets that can be used for print, gallery, and grant consideration. A question and answer period will conclude the talk.

The lecture is FREE to NWDC members, although you will need to pay admission to the museum to visit the galleries. There will be a fiber exhibit, *The Mysterious Content of Softness*, at the museum at the same time.

Directions to Bellevue Arts Museum,

Bellevue Arts Museum is located across from Bellevue Square on Bellevue Way NE at the corner of Bellevue Way NE and NE 6th in downtown Bellevue. Two floors of free parking are available below the Museum. BAM is also easily reached by bus. Click here to plan your trip to BAM using [Google Maps](#).

SEATING IS LIMITED !!
YOU WILL NEED TO RSVP
TO THIS EVENT!!
Bellevue Arts Museum
Phone: 425.519.0770
email: info@bellevuearts.org

2011 Calendar

/

Tuesday, February 1, 2011 Images due for "Confluence" Chase Gallery – Spokane, WA Show Dates: 9-7-11 to 10-29-11

Friday, February 18th 6:30 -7:30 pm lecture Marci McDade, editor of Fiberarts magazine, at Bellevue Arts Museum

Sunday, February 27, 2011 1-4pm Image Bank Shoreline Public Library

Saturday, March 5th, 2011 Opening of NWDC Invitational Show and social at Matzke Fine Art 2345 Blanche Way Camano Island, WA www.matzkefineart.com Show continues thru April 10, 2011 www.matzkefineart.com

April 20, 2011 7-9pm photoshop lecture with Gordon Modin Youngstown Community Center

Join Marci Rae McDade, editor of Fiberarts magazine, to learn about the humble beginnings of one of the world's most influential textile arts publications, in print for over thirty-five years that covers artists working with a wide range of fiber materials and techniques, news from the fiber field, trends, creative processes, exhibition and book reviews. McDade will discuss the magazine's guiding mission to promote exceptional recent works of art made with a vast array of fiber materials and techniques including basketry, conceptual craft, needle arts, quilting, soft sculpture, wearable art, and much more. Highlights of important artists promoted in print over the last thirty-five years will inform the past, present, and future editorial direction of Fiberarts.

In addition to an informed overview of the contemporary fiber arts field, McDade adds to her perspective with a decade of experience as a successful independent curator and exhibiting maker of 2d and 3d fiber artwork. She received her MFA from the School of the Art Institute of Chicago's department of fiber and material studies and has a BA in film and video production from Columbia College Chicago. In 2007 she was the Emerging Fiber Artist-in-Residence at the Oregon College of Art and Craft in Portland, Oregon, where she now lives. For artists in attendance, McDade will also provide tips to create attractive and engaging submission packets that can be used for print, gallery, and grant consideration. A question and answer period will conclude the talk.

The lecture is FREE to NWDC members, although you will need to pay admission to the museum to visit the galleries. There will be a fiber exhibit, The Mysterious Content of Softness, at the museum at the same time.

Directions to Bellevue Arts Museum, Bellevue Arts Museum is located across from Bellevue Square on Bellevue Way NE at the corner of Bellevue Way NE and NE 6th in downtown Bellevue. Two floors of free parking are available below the Museum. BAM is also easily reached by bus. Click [here](#) to plan your trip to BAM using Google Maps.

SEATING IS LIMITED!! YOU WILL NEED TO RSVP TO THIS EVENT!! Bellevue Arts Museum Phone: 425.519.0770 email: info@bellevuearts.org

Northwest Designer Craftsmen www.nwdc-online.org February 2011 TWO EVENTS IN FEBRUARY: MARci McDADE, EDITOR OF FIBERARTS MAgAZINE,

**LECTURE AT BELLEVUE ARTS MUSEUM, FEBRUARY 18, 6:30 p.M., AND NWDc'S
ANNUAL SHOW & TALK AT THE SHORELINE PUBLIC LIBRARY, FEBRUARY 27, 2011,
1-4 p.M.**

NWDC

Board of Directors

President: Megan Corwin
mregan@mindspring.com

Vice President: Carol Mine
(206) 360-8743
carol@carolmine.com

2

Treasurer: Loren Lukens
llukens@comcast.net

Secretaries: Phyllis King & Katherine
Helsmescht
kingweaver@earthlink.net
kharitz@icloud.com

Education: Delores Taylor
425-788-0817
delores@mac.com

Exhibition Chair: Delores Taylor
425-788-0817
delores@mac.com

Archivist: Beth Wyatt
360-579-7888
bethwyatt@whidbey.com

Hospitality: ?

Membership: Joline El-Hai
(206) 354-8694
jlelhai@comcast.net

Newsletter Editor: Candyce Anderson
253-752-3456
candyce.anderson@gmail.com

Publicity: Trudee Hill
trudee@trudeehill.com

Website Liaison: Trudee Hill
trudee@trudeehill.com

Member at Large: Scott Schultz
206-323-5502
scot@scotsschultz.com



President's Message *Megan Corwin*

It may be a little confusing when you read this, because we would have already had our big meeting at the Frye. I am really looking forward to hearing from you and finding out what direction this important organization will be taking in the near future. For those of you who were unable to attend, we will have CD's available of the meeting, free to members. Please only order one if you were not able to meeting as they cost us \$5 each plus mailing. If you did attend, but would like the CD anyway, we will be happy to send you one if you cover the costs.

The Evite we sent elicited many thoughtful and thought provoking comments, both about the jurying process and the goals and structure of the organization. The board will be reading these and factoring them into the response at our meeting in February. We plan on coming up with three possible directions for jurying NWDC and will submit them to you for a vote in mid-February. We will let you know the results in the March newsletter.

Some of the changes will necessitate updating the By-laws, which, by the way, still require contacting members by US mail. We have to update not only the content of this document, but the media specific language as well. Any changes to the By-Laws require a vote by the membership. So look for that in the future as well.

Regardless of what we decide after the January 30th meeting, I want to encourage all of you to start thinking about how we could create satellite groups in the various states that are not within easy driving distance of Seattle, and miss out on a number of our events. These groups could arrange events, shows and possibly a symposium or two in the future. We could find ourselves participating in an exciting NWDC event in Idaho, or Alaska,

Northwest Designer Craftsmen

NWDC is a 501(c)3 non-profit organization.

Mission

Northwest Designer Craftsmen was founded in 1954 to promote excellence of design and craftsmanship and to stimulate public appreciation and interest in fine craft.

Artists in Washington, Oregon, Idaho, Montana and Alaska, who work professionally in clay, wood, glass, metal, fiber, and/or mixed media, are members. Other members support the crafts in the Pacific Northwest as educators, managers of non-profit arts organizations, or buyers of art for public or private collections.

Membership

Members are admitted twice yearly, through a review of applicants' slides and resumés. Artists interested in applying should request an application form from Membership Chair, Joline El-Hai, jlelhai@comcast.net, (206)354-8694.

Newsletter

Monthly except July-August. Submit news by the 15th for submission in the next month's newsletter to

Editor, Candyce Anderson.
candyce.anderson@gmail.com

or any of the other states that represent the Northwest. Certainly we should think of Portland as our backyard and with a strong group down there, the Seattle board would not have to take charge in a city with resources that are unfamiliar. There are members who have given up their membership because they live far enough away from Seattle to make it difficult or expensive to attend our local events, including the new member jurying process.

Along with this, I encourage all of you to think how you can contribute to running our organization. During the meeting, I handed out an interest sign up sheet with the various jobs that need support from our membership. I hope you found one or two that sparked your interest. We need your help to continue to meet, have our mission directed educational events, exhibitions, and the all-important socials. Although each job involves some time and in many cases, a good deal of involvement, the benefit of working with other artists who are motivated to maintain the quality and camaraderie of our organization greatly outweighs the effort involved. If you didn't have a chance to fill out the form, please feel free to email or call me to let me know what interests you. I look forward to hearing from you.

Megan

NWDC Board of Directors

President: Megan Corwin nmegan@mindspring.com

Vice President: Carol Milne (206) 368-8743 carol@carolmilne.com

Treasurer: Loren Lukens llpots@comcast.net

Secretaries: Patti King & Katherine Holzknecht pkingweaver@earthlink.net khartiste@hotmail.com

Education: Delores Taylor 425-788-0817 delorestaylor@mac.com

Exhibition Chair: Delores Taylor 425-788-0817 delorestaylor@mac.com

Archivist: Beth Wyatt 360-579-7888 bethwyatt@whidbey.com

Hospitality: ?

Membership: Joline El-Hai (206)354-8694 jblelhai@comcast.net,

Newsletter Editor: Candyce Anderson 253-752-3456 candyce.anderson@gmail.com

Publicity: Trudee Hill trudee@trudeehill.com

Website Liaison: Trudee Hill trudee@trudeehill.com

Member at Large: Scott Schuldt 206-323-5502 scott@scottschuldt.com

President's Message

Megan Corwin It may be a little confusing when you read this, because we would have already had our big meeting at the Frye. I am really looking forward to hearing from you and finding out what direction this important organization will be taking in the near future. For those of you who were unable to attend, we will have CD's available of the meeting, free to members. Please only order one if you were not able to meeting as they cost us \$5 each plus mailing. If you did attend, but would like the CD anyway, we will be happy to send you one if you cover the costs.

The Evite we sent elicited many thoughtful and thought provoking comments, both about the jurying process and the goals and structure of the organization. The board will be reading these and factoring them into the response at our meeting in February. We plan on coming up with three possible directions for jurying NWDC and will submit them to you for a vote in mid-February. We will let you know the results in the March newsletter.

Some of the changes will necessitate updating the By-laws, which, by the way, still require contacting members by US mail. We have to update not only the content of this document, but the media specific language as well. Any changes to the By-Laws require a vote by the membership. So look for that in the future as well.

Regardless of what we decide after the January 30th meeting, I want to encourage all of you to start thinking about how we could create satellite groups in the various states that are not within easy driving distance of Seattle, and miss out on a number of our events. These groups could arrange events, shows and possibly a symposium or two in the future. We could find ourselves participating in

Northwest Designer Craftsmen NWDC is a 501(c)3 non-profit organization.

Mission Northwest Designer Craftsmen was founded in 1954 to promote excellence of design

and craftsmanship and to stimulate public appreciation and interest in fine craft.

Artists in Washington, Oregon, Idaho, Montana and Alaska, who work professionally in clay, wood, glass, metal, fiber, and/or mixed media, are members. Other members support the crafts in the Pacific Northwest as educators, managers of non-profit arts organizations, or buyers of art for public or private collections.

Membership Members are admitted twice yearly, through a review of applicants' slides and resumés. Artists interested in applying should request an application form from Membership Chair, Joline El-Hai, jblelhai@comcast.net, (206)354-8694.

Newsletter Monthly except July-August. Submit news by the 15th for submission in the next month's newsletter to Editor, Candyce Anderson. candyce.anderson@gmail.com

an exciting NWDC event in Idaho, or Alaska, or any of the other states that represent the Northwest. Certainly we should think of Portland as our backyard and with a strong group down there, the Seattle board would not have to take charge in a city with resources that are unfamiliar. There are members who have given up their membership because they live far enough away from Seattle to make it difficult or expensive to attend our local events, including the new member jurying process.

Along with this, I encourage all of you to think how you can contribute to running our organization. During the meeting, I handed out an interest sign up sheet with the various jobs that need support from our membership. I hope you found one or two that sparked your interest. We need your help to continue to meet, have our mission directed educational events, exhibitions, and the all-important socials. Although each job involves some time and in many cases, a good deal of involvement, the benefit of working with other artists who are motivated to maintain the quality and camaraderie of our organization greatly outweighs the effort involved. If you didn't have a chance to fill out the form, please feel free to email or call me to let me know what interests you. I look forward to hearing from you.

Megan

NWDC Board Meeting Minutes Summary January, 2011

Due to technical difficulties, the minutes from the 1/25 board meeting will have to wait until after Feb. 8th, this just in from Patti King who is in snowy upstate New York. Life happens.....

Look for the summary of January's board minutes in next month's newsletter.

NWDC Annual Show and Tell

Members wanting to participate in one of our most entertaining programs of the year, the annual "Show and Tell" are asked to email up to 5 images, jpeg format at 72 dpi, no larger than 1200 pixels any one direction to Lanny Bergner at Lbergner@wavecable.com. Lanny will compile the images into a PowerPoint presentation. Participating members will be asked to give a brief verbal description of the projected works. This is a great chance to show your recent work and get to know the work of fellow NWDC members. The program will be held at Shoreline Library from 1:00pm – 4:00pm on Sunday, February 27th. The presentation will probably begin around 2:00 pm. February 25th is the last day images can be submitted, but if possible, PLEASE send your images in early so as not to plug up Lanny's e-mailbox.

Directions to the Shoreline Library:

Click here for a ["printer friendly"](#) version of the map & directions

From I-5 North or South:
Take the NE 175th St. exit, (exit #176). Go east on NE 175th St. The Shoreline Library is on the right side of NE 175th, (on the corner of NE 175th St. and 5th Ave NE).

From Highway 520 or I-90 (Eastside):
Go west to I-5 Northbound, then follow the instructions for I-5 N.
Metro Bus Routes 347 and 348 go by the Shoreline Library. Visit [Metro Transit's Online Trip Planner](#).

Anne Gould Hauberg is 93!

These pics of Lifetime member **ANNE GOULD HAUBERG** were taken by Lynn DiNino on a visit she and Sidney Herness paid her at her penthouse on Pill Hill last month. She is 93, looking really good and seemed to be in very good shape although she rarely leaves home. The bottom picture is of Sidney and Lynn on hands and knees, paying their respects.



Anne Gould Hauberg at 93!



Lynn and Sidney paying their respects to Anne Hauberg

Northwest Designer Craftsmen Membership Roster

Thanks, Rebecca for updating the [membership roster](#)!

For the time being, **CAROLYN PRICEDYER's** contact info is:

1660 Gatton Drive, EV28
San Jose, CA 95125
cell phone: 206-660-9118
email: none

January, 2011

These pics of Lifetime member A

NNE

G

OULD

H

AUBERG

were

Due to technical difficulties, the minutes from the 1/25 board meeting will have to wait until after Feb. 8th, this just in from Patti King who is in snowy upstate New York. Life happens.....

Look for the summary of January's board minutes in next

taken by Lynn DiNino on a visit she and Sidney Herness paid her at her penthouse on Pill Hill last month. She is 93, looking really good and seemed to be in very good shape although she rarely leaves home. The bottom picture is of Sidney and Lynn on hands and knees, paying their respects.

month's newsletter.

NWDC Annual Show and Tell

Members wanting to participate in one of our most entertaining programs of the year, the annual "Show and Tell" are asked to email up to 5 images, jpeg format at 72 dpi, no larger than 1200 pixels any one direction to Lanny Bergner at Lbergner@wavecable.com. Lanny will compile the images into a PowerPoint presentation. Participating members will be asked to give a brief verbal description of the

Anne Gould Hauberg at 93!

projected works. This is a great chance to show your recent work and get to know the work of fellow NWDC members. The program will be held at Shoreline Library from 1:00pm – 4:00pm on Sunday, February 27th. The presentation will probably begin around 2:00 pm. February 25th is the last day images can be submitted, but if possible, PLEASE send your images in early so as not to plug up Lanny's e-mailbox.

Directions to the Shoreline Library:

Click [here](#) for a "printer friendly" version of the map & directions

From I-5 North or South:

Lynn and Sidney paying their respect to Anne Hauberg

Take the NE 175th St. exit, (exit #176). Go east on NE 175th St. The Shoreline Library is on the right side of NE 175th, (on the corner of NE 175th St. and 5th Ave NE).

From Highway 520 or I-90 (Eastside): Go west to I-5 Northbound, then follow the instructions for I-5 N. Metro Bus Routes 347 and 348 go by the Shoreline Library. Visit Metro Transit's Online Trip Planner.

Northwest Designer craftsmen Membership Roster

Thanks, Rebecca for updating the membership roster!

For the time being, C

AROLYN

contact info is:

1660 Gatton Drive, EV28 San Jose, CA 95125 cell phone: 206-660-9118 email: none

P

RICE

D

YER

,

S

③

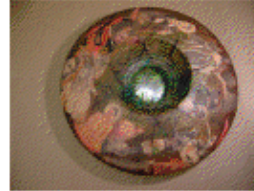
Member News:

4



INGE ROBERTS, ZIA GIPSON, and DANIELLE BODINE will be exhibiting work in "Saints and Sinners" at MUSEO Gallery on Whidbey Island. This group show that promises to push the limits and blur the lines between good and evil will be on display from January 22 to February 27, 2011.

MUSEO
215 First Street
P. O. Box 548
Langley, WA 98260
360.221.7737
museo@whidbey.com
<http://www.museo.cc>

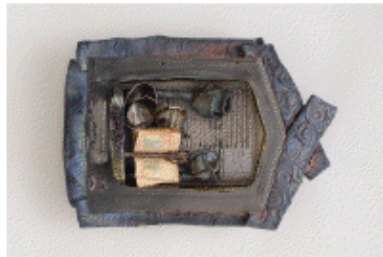


Danielle Bodine, "And you?"
Mixed media – Mulberry paper,
colored printed images,
paint, dyed, stamped, mirror.
15" D X 4"H

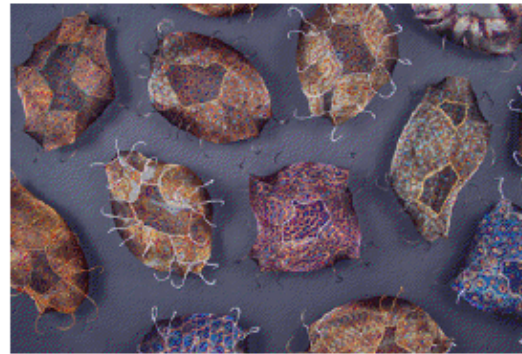


Zia Gipson, "Life's A Gamble series:
Traveling Dice Alter with Six Saints"
(pictured is St Dymphna)
From the top right:
Six Virtues, Heaven, Hell, or Limbo,
Lust x 6, Gluttony x 6, Six Sins
Each is 4" on a side. Felt casing
on foam cores with sewn labels jet
printed onto cotton.

LANNY BERGNER will be having a solo exhibition at the Anchor Art Space. "Bending Space" will open February 4th with a reception from 6:00 – 9:00 pm. The exhibition runs until February 27th. The gallery is at 216 Commercial Avenue, Anacortes, WA. Hours are 11:00 am – 4:00 pm Thursday – Sunday. Gallery website: <http://www.anchorartspace.org/index.html>



Lin Holley, "Maria's Retablo"
Raku
Photo by Roger Schreiber



Lanny Bergner, "A Gaggle of Baskets"
Stainless steel mesh, wire
H60" x W96" x D8"

LIN HOLLEY will be featured in a new Lark book, "500 Raku" with her piece, "Maria's Retablo". The book will be out this Spring.

How to submit information about what you've been up to, to the NWDC newsletter:

With the NWDC newsletter moving to a digital format, information that you'd like to have included in the newsletter needs to be ready to layout. Here's a Q & A to help you make sure that what you provide is ready to include:

What's appropriate to include? Anything recent or upcoming about you and/or your art that you want NWDC members to know. For instance exhibits, classes/workshops, art or studio sales, studio space, opportunities, etc. would all be appropriate. Be sure to include basic information, i.e. who, what, why, when (dates and times), where (include city and state), how, etc. Website addresses are especially welcome. The newsletter can now link directly to them if you hover the cursor over a website or e-mail address and then click on it.

How should the text be formatted? In plain text, Arial font, size 10. Format it so it's ready to copy and paste into the newsletter. Please don't make us have to distill your info down to its essence. Attached documents are better, rather than in the body of the e-mail. Please use .doc format if sending a Word document instead of .docx format. Not everyone has Office 2008 yet, so .docx files can't be opened by folks using an older version of Word. Use correct punctuation. If it's not formatted correctly it will not be included.

What about images? We want images, but they must be formatted correctly. All images must be no larger than 350 pixels wide and high, 72 dpi, and must be jpeg format. Please include titles, medium, dimensions, etc.,

When does it need to get to candy? By the 15th of the month. In the subject box of your emails, please use "newsletter item."

4

Member News:

I

NGE

R

OBERTS

, Z

IA

G

IPSON

, and D

ANIELLE

B

ODINE

will be exhibiting work in “Saints and Sinners” at MUSEO Gallery on Whidbey Island. This group show that promises to push the limits and blur the lines between good and evil will be

Zia Gipson, “Life’s A Gamble series: Traveling Dice Altar with Six Saints” (pictured is St. Dymphna) From the top right: Six Virtues, Heaven, Hell, or Limbo, Lust x 6, Gluttony x 6, Six Sins Each is 4” on a side. Felt casing on foam cores with sewn labels jet printed onto cotton.

how to submit information about what you’ve been up to, to the NWDC newsletter:

With the NWDC newsletter moving to a digital format, information that you’d like to have included in the newsletter needs to be ready to layout. Here’s a Q & A to help you make sure that what you provide is ready to include: What’s appropriate to include? Anything recent or upcoming about you and/or your art that you want NWDC members to know. For instance exhibits, classes/workshops, art or studio sales, studio space, opportunities, etc. would all be appropriate. Be sure to include basic information, i.e. who, what, why, when (dates and times), where (include city and state), how, etc. Website addresses are especially welcome. The newsletter can now link directly to them if you hover the cursor over a website or e-mail address and then click on it. How should the text be formatted? In plain text, Arial font, size 10. Format it so it’s ready to copy and paste into the newsletter. Please don’t make us have to distill your info down to its essence. Attached documents are better, rather than in the body of the e-mail. Please use .doc format if sending a Word document instead of .docx format. Not everyone has Office 2008 yet, so .docx files can’t be opened by folks using an older version of Word. Use correct punctuation. If it’s not formatted correctly it will not be included. What about images? We want images, but they must be formatted correctly. All images must be no larger than 350 pixels wide and high, 72 dpi, and must be jpeg format. Please include titles, medium, dimensions, etc., When does it need to get to candy? By the 15th of the month. In the subject box of your emails, please use “newsletter item.”

on display from January 22 to February 27, 2011. MUSEO 215 First Street P. O. Box 548 Langley, WA 98260 360.221.7737 museo@whidbey.com <http://www.museo.cc>

Danielle Bodine, “And you?” Mixed media – Mulberry paper, collaged printed images, painted, dyed, stamped, mirror. 15” D X 4”H

L

ANNY

B

ERGNER

will be having a solo exhibition at the Anchor Art Space. "Bending Space" will open February 4th with a reception from 6:00 – 9:00 pm. The exhibition runs until February 27th. The gallery is at 216 Commercial Avenue, Anacortes, WA. Hours are 11:00 am – 4:00 pm Thursday – Sunday. Gallery website: <http://www.anchorartspace.org/index.html>

Lin Holley, "Maria's Retablo" Raku Photo by Roger Schreiber

will L

IN

be featured in a new Lark book, "500 Raku" with her piece, "Maria's Retablo". The book will be out this Spring.

Lanny Bergner, "A Gaggle of Baskets" Stainless steel mesh, wire H60" x W96" x D8"

H

OLLEY

Opportunities:

Travel to ETHIOPIA

Travel to ETHIOPIA with LARS HUSBY on this once-in-a-life time adventure, August 24-September 16, 2011. This is your opportunity to visit this incredible country and see first hand stunning arts and crafts villages in the North and East that include rock hewn churches considered to be the 8th wonder of the world, spectacular waterfalls, ancient sites; game animals; a cavemous open air market; incredible food; and much more in the 1st leg of the trip. The 2nd leg of the trip, which can be included or not, is to traditional tribal villages in the South that produce fine textiles, jewelry, and ceramics, and where tribal peoples are living works of art. The trip can be done as a whole August 24-September 16, or it can be done in one or two parts. See the [attachment](#) or contact Lars Husby: lhusby@bellewecollege.edu to get more information or to sign up before the end of February.

(LYNN DINIHO is signed up to go on the first half of this trip, which, by the way, is very economically priced. Anyone else want to go? Lynn could use a room mate.)

5

Judy Zugish's 2ND ANNUAL HARDY CYCLAMEN SALE

Come visit her wonderful nursery and studio.

**Hardy
Cyclamen Sale**

Jan 29 and Feb 6
10am - 4pm



Bouquet Banque Nursery
8220 State Ave Marysville, Wa 98270
www.twigtwisters.com
ph 360-659-4938 fishsticks@clearwire.net

The Mysterious Content of Softness at BAM February 4th – June 26, 2011

Bringing together 12 national and international artists, *The Mysterious Content of Softness* is an exploration of the transformative power of fiber and its connection to the human body. Fiber techniques such as knitting, loom-weaving and crochet have long helped us to fashion personal identity, whether through the clothing we wear or our cultural traditions. In fact, the very nature of fiber – sometimes soft and flexible, while at other times rough and rigid – carries with it a unique metaphor for what it means to be human. It is these mysteriously soft, yet enduring qualities – the ability to adapt and shape – which gives fiber its immense potential for addressing who we are and for capturing the open-ended fluidity of life. The exhibition's title is inspired by Polish sculptor Magdalena Abakanowicz, whose enormous fiber sculptures made her one of the most celebrated artists of our time. Featured artists include: Diem Chau, Lauren DiCioccio, Angela Ellsworth, Aude Franjou, James Gobel, Angela Hennessey, Rock Hushka, Lisa Kellner, Miller & Shellabarger, Lacey Jane Roberts, Jeremy Sanders and Nathan Vincent. Organized by Bellevue Arts Museum, curated by Stefano Catalani.



Lauren DiCioccio
Two Dollar Bill (detail), 2010
Photo: Ben Premeaux

Opportunities:

Travel to ETHiOPIA

Travel to ETHIOPIA with L

ARS

on this once-in-a-life time adventure, August 24-September 16, 2011. This is your opportunity to visit this incredible country and see first hand stunning arts and crafts villages in the North and East that include rock hewn churches considered to be the 8th wonder of the world, spectacular waterfalls, ancient sites; game animals; a cavernous open air market; incredible food; and much more in the 1st leg of the trip. The 2nd leg of the trip, which can be included or not, is to traditional tribal villages in the South that produce fine textiles, jewelry, and ceramics, and where tribal peoples are living works of art. The trip can be done as a whole August 24-September 16, or it can be done in one or two parts. See the attachment or contact Lars Husby: lhusby@bellevuecollege.edu to get more information or to sign up before the end of February. (L

YNN

D I

N

INO

is signed up to go on the first half of this trip, which, by the way, is very economically priced. Anyone else want to go? Lynn could use a room mate.)

Judy Zugish's 2ND ANNUAL HARDY CYCLAMEN SALE

Come visit her wonderful nursery and studio.

The Mysterious content of Softness at BAM February 4th – June 26, 2011

Bringing together 12 national and international artists, The Mysterious Content of Softness is an exploration of the transformative power of fiber and its connection to the human body. Fiber techniques such as knitting, loom-weaving and crochet have long helped us to fashion personal identity, whether through the clothing we wear or our cultural traditions. In fact, the very nature of fiber – sometimes soft and flexible, while at other times rough and rigid – carries with it a unique metaphor for what it means to be human. It is these mysteriously soft, yet enduring qualities – the ability to adapt and shape – which gives fiber its immense potential for addressing who we are and for capturing the open-ended fluidity of life. The exhibition's title is inspired by Polish sculptor Magdalena Abakanowicz, whose enormous fiber sculptures made her one of the most celebrated artists of our time. Featured artists include: Diem Chau, Lauren DiCioccio, Angela Ellsworth, Aude Franjou, James Gobel, Angela Hennessey, Rock Hushka, Lisa Kellner, Miller & Shellabarger, Lacey Jane Roberts, Jeremy Sanders and Nathan Vincent. Organized by Bellevue Arts Museum, curated by Stefano Catalani.

H

USBY

Lauren DiCioccio Two Dollar Bill (detail), 2010 Photo: Ben Premeaux

⑤

Exhibition News *Delores Taylor, Exhibition Chair*

8



CALL FOR ART

**Northwest Designer Craftsmen Exhibit
at the Chase Gallery**

“Confluence”, a juried exhibition

September 7— October 29, 2011
Artists' Reception October 7, 5-9 p.m.

Chase Gallery

<http://www.spokanearts.org/chase.aspx>

Exhibition Specifics (Please read everything below carefully):

The Chase gallery (located in the city hall of Spokane) is located at the confluence of two tributaries of the Spokane River merging together. The theme of the exhibit is “Pairs” and we are encouraging diptychs. All 2D and 3D work will be considered for jurying.

Images should be 300 dpi, you may submit up to three pieces and include details shots. All submissions should be on a CD and are due February 1, 2011.

Notice of acceptance will be February 15, 2011.

Accepted artwork should arrive September 6, 2011 between 8 a.m. and 9 p.m., or one week before if shipped.

Any jewelry accepted for the exhibit should include its own fabric or hanging system to display.

Application Must Be Submitted by Mail and include the following documentation on the CD:

1. Artist Bio (one page)
2. Artist Statement (one page)
3. CV or Artist Resume (two pages)
4. Image list, including name, dimensions, year, media, methods, display info, retail price/value (indicate if NFS for insurance purposes)
5. Images (naming convention: lastnamefirstinitial.artname, for example: smithz.idress edmys elf)
6. Photography credit
7. Security needs for the artist's work

Mail CD To:

Delores Taylor
20411 NE 198th Street
Woodinville, WA 98077-8824
425 788-0817
delorestaylor@mac.com

8

Exhibition News

Delores Taylor, Exhibition Chair

September 7— October 29, 2011 Artists' Reception October 7, 5-9 p.m.

Chase Gallery <http://www.spokanearts.org/chase.aspx>

Exhibition Specifics (Please read everything below carefully): The Chase gallery (located in the city hall of Spokane) is located at the confluence of two tributaries of the Spokane River merging together. The theme of the exhibit is "Pairs" and we are encouraging diptychs. All 2D and 3D work will be considered for jurying.

Images should be 300 dpi, you may submit up to three pieces and include details shots. All submissions should be on a CD and are due February 1, 2011.

Notice of acceptance will be February 15, 2011.

Accepted artwork should arrive September 6, 2011 between 8 a.m. and 9 p.m., or one week before if shipped. Any jewelry accepted for the exhibit should include its own fabric or hanging system to display.

Application Must Be Submitted by Mail and include the following documentation on the CD:

Artist Bio (one page) 1. Artist Statement (one page) 2. CV or Artist Resume (two pages) 3. Image list, including name, dimensions, year, media, methods, display info, retail price/value 4.

(indicate if NFS for insurance purposes) Images (naming convention: lastnamefirstinitial.artname, for example: smithz.idressedmyself) 5. Photography credit 6. Security needs for the artist's work 7.

Mail cD To: Delores Taylor 20411 NE 198th Street Woodinville, WA 98077-8824 425 788-0817
delorestaylor@mac.com

cAll FOR ART Northwest Designer Craftsmen Exhibit at the Chase Gallery

"Confluence", a juried exhibition