



Northwest Designer Craftsmen

www.nwdc-online.org

Facebook: <https://www.facebook.com/pages/Northwest-Designer-Craftsmen-NWDC/355877767779930?sk=wall>

NWDC online calendar: <http://www.nwdc-online.org/calendar/>

Members' Only Site: <https://sites.google.com/site/nwdesignercraftsmen>

Meetings & Speakers

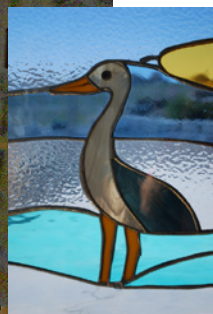


Phinney Neighborhood Center Program: 2nd Wed. of the month
Board meetings 5:30-7 (open to everyone) Speaker 7-8 pm / Social Time 8-9 pm

- Sept. 10 Cecilia Blomberg
- Oct. 8 Katherine Holzknacht
- Nov. 12 Larry Halvorsen

Cecilia Bomberg will present "Creation and Recreation" September 10 at the Phinney

Cecilia Blomberg grew up and was educated in Sweden, receiving the equivalent of an MFA, speciality Tapestry, in 1976. She came to Oregon temporarily in 1977 and to Gig Harbor in 1989. She has been participating in regional, national and international shows, and working on commissions for public and private clients, including the Washington State Arts Commission (WSAC). She will talk about the Unicorn Tapestry Project at Stirling Castle in Scotland where she worked for two years and her current project: a commission for the Air Force Academy Catholic Chapel involving 13 tapestries.



Oct. 8 at the Phinney:
Katherine Holzknacht will present visuals and speak about her recent commission for the WA State Art in Public Places program. She will talk about the selection process, design, fabrication, and installation of four large stained glass windows for an elementary school in Moses Lake. The public is invited to attend.

Reaching Beyond: Northwest Designer Craftsmen at 60

Exhibition Update - RSVP Request for Reception



There will be a special reception exclusively for members of NWDC, and members of the Whatcom Museum.

WHEN: Saturday evening, September 13, 2014, 5-7 pm.

WHERE: Whatcom Museum Lightcatcher Building, 250 Flora Street, Bellingham, WA 98225.

WHO: Members of NWDC and their spouses or significant others.*

Members of the Whatcom Museum.

Special Guests (By invitation only).

RSVP: If you plan to attend the opening, please RSVP the Whatcom Museum at museuminfo@cob.org by Monday, September 8, 2014. In the subject line of an email, please put NWDC RSVP, followed by your name, and whether 1 or 2 people will be in your party e.g, NWDC RSVP, B. Smith 2.

The museum will provide a nametag for each NWDC member attending the reception.

* For logistical reasons, the museum has requested that attendance at this event be restricted to these 2 membership groups, plus the special guests invited by either organization. We very much encourage you and your spouse/significant other to attend the opening, but ask that you consider a different date to visit the show with your friends and extended family. The show opens to the public the next day, September 14th.

President's Letter

With good weather and a spectacular setting, NWDC celebrated our 60th Anniversary. What a glorious party!

Our program began with toasts to the organization. The value of NWDC and the experience of making things were the underlying themes.

We were thrilled to have founder Russell Day and his wife, Marjorie, with us.

We marveled at our new catalog: "Reaching Beyond: Northwest Designer Craftsmen at 60." NWDC tradition calls for a beautiful catalog and what a relief that we produced one! I acknowledged the membership:

"Your work is the foundation. Thank you for making the work that only you can make. And thank you for participating. Your work is beautiful. It makes NWDC NWDC."

Still, we needed someone to make that work into a catalog. Exhibition Chair Ron Pascho was up for kudos for that endeavor.

"When you make a catalog that involves 121 artists and I don't even know how many art entries, and you have text from all contributing members, plus text from the curator, museum people, NWDC commentators...to manage all that, you need a General.

Ron Pascho was that General."

I noted that Ron had the skill set for the job coupled with a commitment to a professional result. I noted, as General, he generated every step while being so generous with his time and energy. In keeping with this metaphor, Ron was presented with paper medals.

Ron in turn, acknowledged contributors to the Catalog: the Latham's generous financial help, Lynn DiNino's interview, Jill Clark's hospitality, Larry Metcalf and Dan Fox's work on the Founder's section. For my participation, he dubbed me "relentless" and I felt flattered -- even as I thought "I'm being compared to a tugboat."

Finally, we celebrated Larry Metcalf's forty plus years of service to NWDC. The NWDC Board designed the Lifetime Achievement Award with Larry in mind: multiple decades of membership in NWDC, service on the board, extraordinary and sustained contribution to NWDC. Long term members Ron Adams and Lynn DiNino recalled earlier days of NWDC and also Larry's contributions to the wider art scene -- not just NWDC. Lynn DiNino presented a vest with epaulets and "Love to Larry Metcalf xoxox" embroidered on the pockets.

After our exhaustive lists of all the things Larry has done -- the years as President, the exhibitions designed, the parties thrown, the connections made, the burgers flipped, Larry responded with the message of how much one grows with service. You get back what you put in. And then the even more stunning, totally memorable, and beautiful comment (speaking to the membership):

"I didn't do all that work just to do things; I did it to be with you."

Lastly, on behalf of NWDC, David French gave Larry not just a memento-- but an actual piece. His intention was to "floor" Larry. And he did more than that -- he floored us all.

Thank you to everyone who participated in this program.



Northwest Designer Craftsmen
Lectures Series presents
Katherine Holzkecht



Katherine Holzkecht will present visuals and speak about her recent commission for the WA State Art in Public Places program. She will talk about the selection process, design, fabrication, and installation of four large stained glass windows for an elementary school in Moses Lake, Washington.



Wednesday, October 8th, 2014, 7pm to 8pm
Phinney Ridge Neighborhood Center, Lower Brick Building
6532 Phinney Avenue North, Seattle, Washington
Free and Open to the Public

A Special Tribute



NWDC President Lois Harbaugh presented Exhitions Chair Ron Pascho with a special tribute. Ron has been working endlessly to ensure our 60th Anniversary Show is a success. Lois created this “General” Badge to honor his hard work and dedication. Thank you, Ron! An extra “Thank You” goes to Lois Harbaugh for her endless efforts on behalf of NWDC, too. (We should have had a crown for her.)

Special “Thank You’s”

Thank you, Vickie Holland and Paul Arons for sharing your amazing home and big trees with NWDC! Your design abilities astound us!

Thank you to our new Hospitality Czarina, Crista Matteson. You have a lot of experience throwing parties and it showed. NWDC is in good hands for the future, party-wise! Thank you also to Crista’s family for your extraordinary support of her!

Thank you to my family: husband, Weston Nishimura, and daughter, April Nishimura, and her partner Christine Guiao for working behind the scenes for the entire party, doing whatever needed to be done. Your support means everything to me.

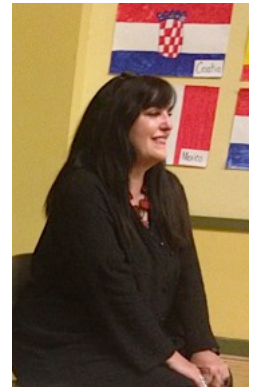
From Lois Harbaugh

Judy Tuohy and Carie Collver at our June Phinney Members' Meeting



Judy Tuohy

Judy Tuohy, executive director, and Carie Collver, gallery director, of the Schack Art Center in Everett were guest speakers at the June meeting. Judy explained that plans for the Art Center started in the 1990's as the Snohomish County Arts Council, founded in 1974, began to focus on its educational programs. A major donation from Weyerhaeuser in 2000 fueled a \$6 million funding campaign that ultimately resulted in the opening of the Schack Art Center in May 2010. The center is named for John and Idamee Schack, who over the years donated millions to community programs in Snohomish County.



Carie Collver

The Schack hosted about 32,000 visitors last year. Just over 80% attend exhibitions in the gallery space with others attending a full schedule of art classes and other community events. Among other events, the Schack sponsors the annual Artists' Garage Sale, the Fresh Paint artist-in-action festival on the Marina, Schack-tober-fest, and summer art camps for kids.

The Schack is now fund-raising for a \$1.9 million expansion to open in the Fall of 2015. The expansion will include a 1500 sq. ft. gallery space (watch for the inaugural show featuring the Chuck Close) and 3 additional studio spaces. The new studios will include a new print shop, an additional space for painting and drawing, and a studio for metalsmithing and lapidary. Also included will be an area for glass casting and a completion of the cold shop to complement the existing hot shop.

If you have ideas for exhibitions, contact Carie Collver. If you are interested in teaching, contact Shannon Tipple-Leen. You can also go on the website schack.org for information about calls for entry or for further information about supporting the Center. Membership is \$50 annually. A \$100 annual membership includes entry to museums across the country through the North American Reciprocal Museums Program.

NWDC Board Retreat At BIMA

We had the NWDC board retreat at Bainbridge Island Art Museum. We talked about recruiting a new board for next year. Board members are standing in an exhibit by David Eisenhower. BIMA is emphasizing artists from the Olympic Peninsula, whom the director feels have been under-represented in the state's museums.



NWDC President Lois Harbaugh with BIMA director Greg Robinson.

A Chihuly sculpture was dedicated in June at Panorama City (retirement community) in honor of Russell Day (NWDC's last living Founder) and his wife Marjorie live. Several NWDC guests attended.

Russell Day was an early glass artist (working in stained glass) and was very helpful to Dale Chihuly when he started his career. Russell founded the art dept. at Everett Community College and had a big impact on many artists of the region.



All members will be asked to approve this nomination in the New Membership Voting in November

Nomination of Stefano Catalani for NWDC Honorary Membership by Larry Metcalf

It is with pleasure and confidence that I nominate Stefano Catalani for Honorary Membership to NWDC. He is in the category of former Honorary Member LaMar Harrington and the present Honorary Members Lloyd Herman and Michael Monroe. All were and are leaders in the art and craft movement in the Northwest and the United States. Stefano has established his presence in their tradition.

He has brought back the exhibitions that were one time the exclusive tradition of the Henry Gallery. He has carried this on through the exhibitions on clay and fiber and future exhibitions. His innovative selection of exhibitions has included Mary Lee Hu and David Chatt, members of NWDC. He was a major input to their catalogues. His curation of Patti Warashina's exhibition was one of the highlights of the year.

His work with the local galleries and their Northwest artists shows his research into the local arena. He is not afraid of confronting social issues when curating an exhibition. He brings ideas and thought to the viewer. His variety of exhibitions from out of the region has inspired the artists of the Northwest and given much to the intellectual question of art vs craft.

His collaborative input to NWDC through our support of lectures at the Museum has been innovative in the lecture series. Stefano's input into the Northwest art scene has been outstanding. He has also reached a national status for the Bellevue Arts Museum and their mission.

In nominating him, I thought about how significant a collaboration between our two organizations could be. Stefano has fresh and innovative ideas.

Summert Social & 60th Anniversary Catalog Party
At the beautiful home of Vicki Holland & Paul Arons



Lynn Di Nino and Larry Metcalf

At right: Larry Metcalf received this David French sculpture from NWDC in recognition of his decades of dedication to our organization. Presenting the commemorative gift is the artist himself - David French.



Larry Metcalf, Lois Harbaugh, Cal Killgore and Russell Day



Lois Harbaugh with Russell and Margorie Day



Ron Pascho



Lloyd Herman



Dona Anderson and Russell Day



Hosts Vickie Holland and Paul Arons



Cal Killgore, Larry Metcalf and Lynn Di Nino



Summer
Social &
Catalog
Party



Julie Conway



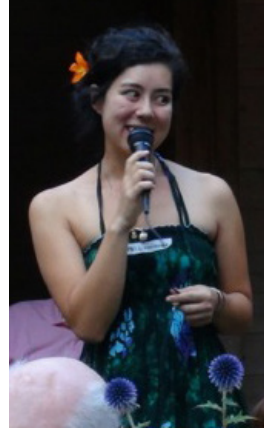
Anne Praczukowski, Ed Praczukowski and Agnes McLin



Dina Barzel & Katherine Holzknacht



Barbara Walker



April Nishimura



Crista Matteson



Laurie Hall, David French & Nancy Loorem



Patti Shaw and Carol Milne



Always - such wonderful food!



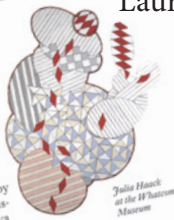
Lloyd Herman, Carol Guthro, Liza Halvorsen and Rosette Gault



In American Craft Magazine Aug. / Sept. 2014 issue:



At Bellingham
Museum
aching Beyond: Northwest
signer Craftsmen at 60
P. 14 - Jan. 4
atmuseum.org
Northwest Designer
aftsmen celebrate six
ades of supporting craft in
e Pacific Northwest with a
ried show of glass, metal,
y, fiber, and mixed media by
artists who bookend its his-
ry: 31-year-old ceramist Eva
nderburgh is the NWDC's
ungest current member, and
rattle artist and teacher
ussell Day, at 102, is its last
ring founder.



LEFT:
Seth Roland
at the Whatcom
Museum

Page 19: Seth Roland and Julia Haack's work is shown in reference to our upcoming 60th Anniversary Show at the Whatcom.

Thank you to Marge Levy, Ron Ho, and the Whatcom's Laura Johanson for helping us get this national publicity.

On Page 34: Many of us will recognize Leo Adam's house from a year ago when he hosted NWDC for an afternoon in September. The next day was our opening in Richland. Many of us were able to visit his inspiring home. Please read Deborah Bishop's wonderful article about Leo's home.

The Materialist

Painter, designer, maker, and master
recycler Leo Adams has built and
furnished his century Washington
home from the ground up.

INTERVIEW WITH
Leo Adams



New Newsletter Editor Needed

Jan Koutsky will retire from being the newsletter editor at the end of this year (December issue) after nearly four years of service to our organization. If you would like more information about what is involved, such as time commitment, skills, etc., please contact Jan at: jankoutsky@comcast.net or at 206-935-2306

Revision of New Membership Application

The Membership Committee has been working all summer to streamline the New Membership Application process. Voting members won't notice any changes, but applicants will now email their images and supporting documents, instead of using the old time-consuming and resource-intensive paper and CD method. We will still be available by phone or email to help applicants who are having difficulties.

The application is on our website www.nwdc-online.org under "How to Join" in the left sidebar menu. Applications are due by midnight Saturday, October 25, 2014. Members will vote online in November, with the results announced in early December. Many thanks to the members who helped us make this important change.

NWDC Web Site Update

Calling all NWDC members to submit images for the website. You can submit up to two: one for the homepage slideshow and one for the members' gallery of your choice. If you would like to be included in the member's gallery, we will also need your artist statement (125 words or less), the gallery you would like to be included in, and your personal website address (optional). Images may be in .jpg or .tif format, at least 72dpi, and a minimum of 400 pixels wide/tall. These are minimum requirements. Feel free to send larger images, which will be formatted accordingly. Please email your files directly to the Website Liaison, Trudee Hill: trudee@trudeehill.com Questions regarding digital image formatting may be sent to Trudee as well.

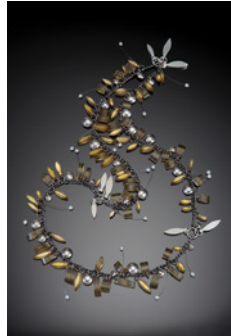
“Head to Toe-A Body of Adornment”
Northwest Designer Craftsmen at the Art Stop Gallery, Tacoma, WA
was held July 12 to August 30, 2014



Barbara Walker



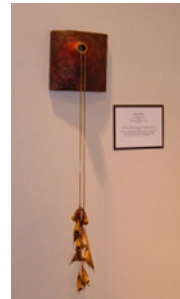
Bobbi Goodboy



Candace Beardslee



Candyce Anderson



Danielle Bodine



Inge Roberts



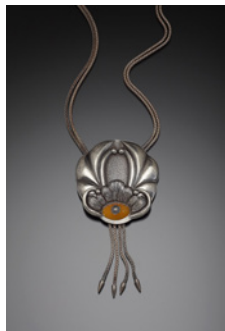
Cynthia Toops



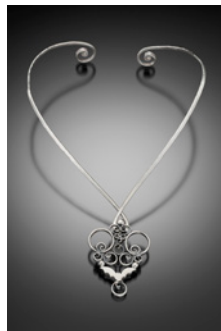
Summer Van Horn



Lynn Di Nino



Joan Hammond



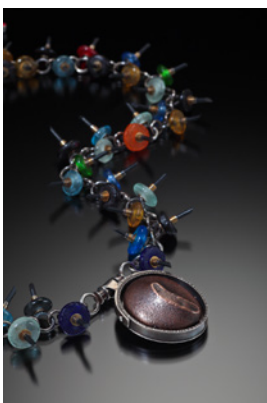
Julia Lowther



Lois Harbaugh



Nanz Aalund



Ron Pascho



Gale Lurie



Trudee Hill



Virginia Causey

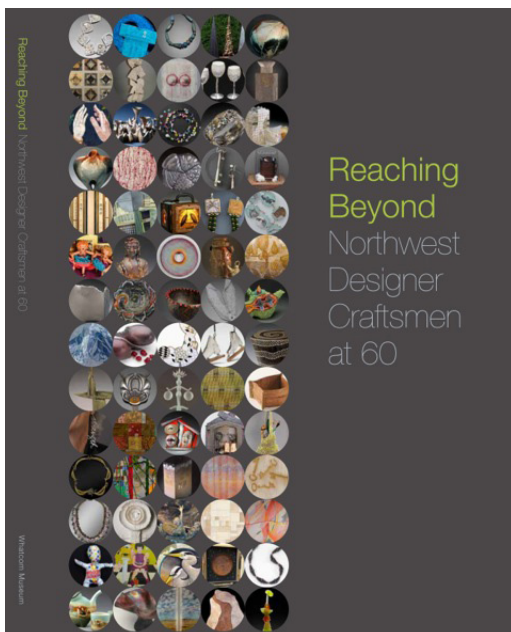
“Member Alert”



Port Townsend
Voted *one of the coolest* small towns in America

NWDC Show Opportunity
Details Coming in Your October Newsletter

Want a Copy of the 60th Anniversary Catalog?



There are 2 options:

First, you may be eligible for a free copy. Why? If you are one of the artists in the catalog, you are automatically qualified for a complimentary copy. Simply contact Loren Lukens: loren.d.lukens@gmail.com, (206) 935-6740

Second, you may purchase one, or more, copies for \$25 + tax each. This option is open to all NWDC members. Again, contact Loren Lukens.

P.S. The plan is to have the catalog available at the September 10 monthly meeting, and at the September 13 museum reception.

NWDC MEMBERS' NEWS

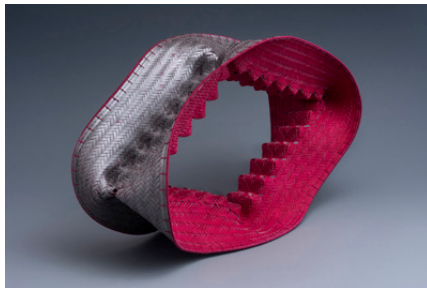
Jean Tudor had two enamel works included in the 48th International Exhibition of the Japan Enamelling Artist Association. The exhibition was held in July in the Tokyo Metropolitan Art Museum. The two pieces both combined raku-fired enamels with smaller sifted enameled pieces applied on the surface of the raku.



At Left: "Raku Enmeshed" is 10" x 10", raku-fired enamel on copper backplate with embedded copper screen, Round insert is liquid flux sgraffito with embedded copper screen on copper.



At Right: "Raku Enmeshed" is 10" x 10", raku-fired enamel on copper backplate with embedded copper screen, Round insert is liquid flux sgraffito with embedded copper screen on copper.



"Threshold," Materials: watercolor paper, acrylic paint, Size: 10 x 16 x 6"

Dorothy McGuinness' piece "Threshold," won 3D Second place, in the 19th Juried Art Show at the Schack Art Center, Everett, <http://www.schack.org/>.

Dorothy McGuinness had a solo show, "Unexpected Weavings," at the Jansen Art Center in Lynden, WA. from July 3rd – August 1st, 2014.



"Double," Materials: watercolor paper, acrylic paint, Size: 9.5 x 7.5 x 9.5"

Carol Milne, Cameron Mason and Julia Haack, have work in the Bellwether Connect 2014 exhibit in Bellevue. The show consists of 33 indoor and outdoor sculptures in Bellevue City Hall and environs. Carol's piece, "Made to Measure," is shown at right. The show runs through October 12th. The show comes with an excellent catalog. Make sure to go on weekdays when City Hall is open.



NWDC MEMBERS' NEWS



"This Land Was Your Land"



"Before The Storm"



"Northwest Passage"

Three of Annette Tamm's fused glass dimensional landscapes are included in the 19th Juried Art Show at the Schack Art Center in Everett, running through August 2nd.



Patricia's image: "Life Goes On (Stanza 561)," cotton, rayon and polyester thread on tulle, 6.5"x6.5" image, 14"x14" framed.

Patricia Resseguie and Brian O'Neill were among five featured artists in The Allen Family Focus Gallery at the Anacortes Arts Festival in late July. The focus exhibition, "Air, Earth, Water," was part of Arts At the Port.



Brian's image: "Untitled," stoneware

NWDC MEMBERS' NEWS



Lin Holley was recently awarded "Juror's Choice" for her brass / clay / found objects wall piece, "Some People Don't Know They Are Angels," shown at Pratt Fine Arts Studio.

Jan Hopkins is included in an exhibition at Fuller Art Museum, 455 Oak Street, Brockton, MA, July 5, 2014 - November 23, 2014, ["Game Changers: Fiber Art Masters and Innovators."](#) Featuring Artists, both past and present, who are recognized for continuously renewing or experimenting with traditional techniques and materials as well as developing revolutionary approaches in the realm of fiber art. The exhibition focuses on the energy and breadth of vision that continues to shape the future of fiber art.



At Left: "Oh Canada" - 22"x10"x7", 2013, grapefruit peel, big leaf maple, philadendrone leaves, ostrich shell beads, yellow cedar bark and waxed linen, hand sewn with buttonhole stitch and looping technique.



At Right: "Odd Pair" 2013, cat: 11.5"x10"x4", mouse 2"x8".2.5", wasp nest fiber, hydrangea petals, money plant pods, melon rind, cedar bark and waxed linen

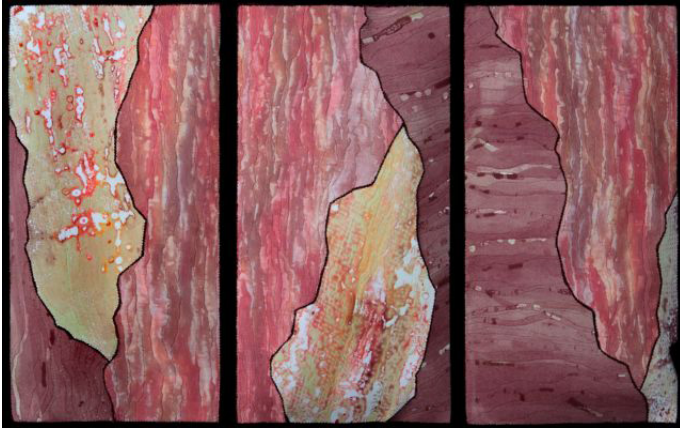


Three raku fires vessels By Ruth E. Allan were included in the Gallery One Invitational Exhibit "Celebrating 25 Years, Ellensburg Fire and Washington Statehood". July 4-27, 2014.

NWDC MEMBERS' NEWS

From Cameron Mason:

I have work up in a number of shows either currently or coming up. The images below each announcement are in those shows.



Soft Sculpture: Soft Sculptures by Cameron Anne Mason and Larry Calkins, Aljoia Thornton Place through September 22nd "Cambium," 2013



Bellwether 2014: Connect Sculpture Biennial in Bellevue (my piece is at Bellevue City Hall through October 12th) Blade Twelve: "Chemise," 2010



My big project this summer was an installation at the Burning Man Festival in August, "Playastan Crossroads," sample at left.



Forming: The Synergy Between Basketry and Sculpture Midland Center for the Arts Midland, Michigan July 8 through September 7th "Earth Form Eight: Sprout" 2014



Polly Adams Suttons has work in "Game Changers: Fiber Art Masters and Innovators," Fuller Craft Museum, Brockton, MA July 5, 2014 - November 23, 2014

Game Changers: Fiber Art Masters and Innovators are those artists, both past and present, who are recognized for continuously experimenting with traditional techniques and materials as well as developing revolutionary approaches in the realm of fiber art. The exhibition focuses on the energy and breadth of vision that continues to shape the future of fiber art.

NWDC MEMBERS' NEWS

NWDC member Danielle Bodine has work in the "Small Expressions" exhibition at the Fuller Craft Museum in Brockton, MA. This international exhibition is sponsored by the Handweavers Guild of America and was juried by Gerhardt Knodel.

Show runs July 12, 2014 - October 5, 2014

Fuller Craft Museum
455 Oak Street
Brockton, MA. 02301
508.588.6000

<http://fullercraft.org/event/small-expressions/>

At Right: "The Wizards" 10"HX6"WX1.5"D Coiled figures, oil can lids.
Photo credit - Michael Stadler



Joan Hammond's neckpiece, "Pursued," appears in "Animal Instincts," an exhibition celebrating the creative inspiration that animals provide. The 2014 Juried Exhibition in Print, sponsored by the Society of North American Goldsmiths and produced by Metalsmith magazine, was published in August.

"Pursued" also will be on view in "Metal Extinction; Using Metal to Honor and Make Permanent Our Vanishing World," a national juried exhibition sponsored by the Metal Arts Society of Southern California. The exhibition runs from September 8 through October 2 at the Saddleback College Art Gallery, 28000 Marguerite Parkway, Mission Viejo, CA.

Don't forget our online calendar and the new links to our exhibitions!

<http://www.nwdc-online.org/calendar/index.php?/exhibitions/>

Take a look! The NWDC Website now has an exhibitions page with individual galleries for each show.

How to submit information to the NWDC newsletter

The deadline is the 15th of the month for the next month's newsletter. What is appropriate to submit? Anything in your professional life you would like to share with NWDC members: exhibits, awards, classes, art or studio sales, call for entries, etc. Be sure to include all the information: who, what, when, where & why.

How should text be formatted? Please send your information in an attached "Word" document, or in the body of an e-mail. The newsletter editor will copy / paste. Please, do NOT send your text in PDF files or jpeg copies of gallery postcards! The text in jpegs and PDFs cannot be copied and pasted.

What about Images? We want images! They need to be in jpeg format, 72 dpi, about 400 pixels on the longest side. Please include name, title, medium, dimensions, etc. Website addresses are great too.

The deadline is the 15th of the month. Send to Jan Koutsky: jankoutsky@comcast.net

Please put "NWDC Newsletter" in the subject line.

President - Lois Harbaugh - Lois.harbaugh@gmail.com 425-454-0098

Vice President - Joan Hammond - joan@haysys.com 425-391- 5045

Secretary - Katherine Holznecht - khartiste@hotmail.com 425-481-7788
2nd secretary - **VACANT**

Treasurer - Loren Lukens - loren.d.lukens@gmail.com 206-935-6740

Archivist - Gretchen Echols - gfechols@comcast.net 206-781-5041

Education - Lin Holley - lin@palmstogether.net 206-322-7593

Education Support - Gale Lurie galeluriepotttery@comcast.net
Steph Mader steph@toltriverstudios.co ,
Patricia Resseguie fibergal@wavecable.com

Education Outreach - Eva Funderburgh - Bellevue Arts Museum lecture and workshop series

Exhibitions - Ron Pascho rpjh1@frontier.com 425-488-3404

Exhibition Support - **VACANT**

Hospitality - **VACANT**

Hospitality Support-Crista Matteson cristamatteson@gmail.com

Membership - Lin McJunkin lin@mcjunkinglass.com 360-941-6742

E-Mail Blasts - Annette Tamm a.tamm@frontier.com 360-299-0323

Roster Manager - Delores Taylor delores@artglassconcepts.com 425-788-0817

Newsletter - Jan Koutsky - jankoutsky@comcast.net 206-935-2306

Publicity - **VACANT**

Roster / Data Base - Delores Taylor - delores@artglassconcepts.com 425-788-0817

Social Media - CJ Hurley - cj@cjhurley.com 503-234-4167

Web Liaison - Trudee Hill - trudee@trudeehill.com 310-908-6675

Image Bank - Lanny Bergner - lbergner@wavecable.com 360-229-0514

NWDC
VOLUNTEERS

Don't forget to say
"thank you" to these
people who make
NWDC work for you.