

[View this email in your browser](#)



Northwest Designer Craftsmen Newsletter

September 2021

---

Remember if you have **member news to submit for the October newsletter the deadline is September 15th**. Please send information in the body of an email (not a pdf or postcard image) to **Judy** at [NWDCeditor@gmail.com](mailto:NWDCeditor@gmail.com). Images need to be in a **jpg format around 600 pixels** on the longest side. Please include titles and media for artworks.

---

## A horizontal banner with a yellow background and a green-to-yellow gradient on the left side. The word 'Deadlines' is written in a large, black, sans-serif font.

September 30th Deadline to submit to NWCraft21

October 30th Deadline for new member submission applications

## A horizontal banner with a yellow background and a brown-to-yellow gradient on the left side. The text 'President's Note' is written in a large, black, sans-serif font.

---

With this edition NWDC resumes our monthly newsletters. Be sure to send in your membership news about exhibitions you are in, grants, honors and accolades you receive by the 15<sup>th</sup> of each month to [nwdceditor@gmail.com](mailto:nwdceditor@gmail.com) to be published in the next newsletter.

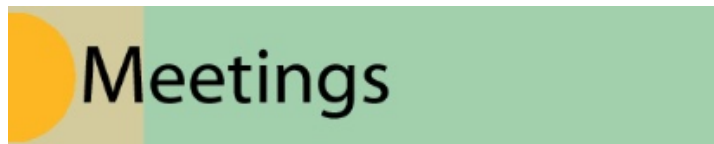
With September our annual effort to invite artists to join NWDC is underway. Deadline for application submissions is October 15th. With this new video brochure: *NWDC: Our Story* <https://www.youtube.com/watch?v=E9t1UKKdPKk&t=7s> and the eblast recently sent to your inbox, you have supporting information to let prospective members know about NWDC and the benefits of membership. Please encourage artists to consider joining. Membership application information is available at the NWDC website: <https://www.nwdesignercraftsmen.org/apply-for-membership>.

This October 24<sup>th</sup> the NWDC Board will hold an in-person retreat with two major goals. The first, to identify how to carry on the leadership of our organization. Several board roles are open including the presidency, vice-presidency, secretary, membership, and social chair positions. Each time members are asked to volunteer for leadership roles we most often do not receive a response to the inquiry, or the answer is no. We are in a difficult position to maintain the model of volunteer governance our non-profit is designed around. *How shall we address this challenge?*

The second retreat goal is to look to the future of NWDC with plans for the next two years--from exhibitions, to invited lectures, member artist talks and educational programs to Living Treasures Projects we will design a plan with the associated budget to support it.

Your thoughts and willingness to participate are welcomed and encouraged. A report on our way forward will be included in the November newsletter.

---

A horizontal banner with a green background and a yellow semi-circle on the left side. The word "Meetings" is written in a bold, black, sans-serif font in the center.

**NWDC Board Meetings second Tuesday of each month from 5:30 to 7 pm. Contact President Nancy Loorem Adams at [nwdcpresident@gmail.com](mailto:nwdcpresident@gmail.com) with topics you would like the Board to consider.**

---

A horizontal banner with a yellow background and a grey semi-circle on the left side. The word "Exhibitions" is written in a bold, black, sans-serif font in the center.

### **NWCraft21 Benefit Exhibition**

November 8, 2021-January 3, 2022

This year our virtual exhibition will benefit the Allied Arts Association/Gallery at the Park in Richland, WA. The exhibition will be presented in the format used last year on the NWDC web site with links to the Gallery at the Park store to handle sales. The form to enter your pieces will be open September 1<sup>st</sup> and the deadline to enter is September 30<sup>th</sup>. All artist members will have one piece selected. You must enter two pieces, so the jury board can choose one and you can enter three. The prospectus can be found [here](#).

*Important dates:*

September 1, 2021	Call for NWCraft21 entry opens
September 30, 2021	Last date to enter by midnight
October 4 – 5, 2021	Jurying
October 8, 2021	Artist notification of selected work
November 8, 2021	Exhibition open at the NWDC website homepage
January 3, 2022	Show Closes

*When photoing new artwork for NWCraft exhibitions photos should be taken with 4:3 aspect ratio because photos with a **width** of 1200 pixels and a **height** of 900 pixels (4:3 ratio) displays **optimally** in the online web gallery. When photoing your own art, there is a setting usually in the Menu section of cameras where 4:3 aspect ratio is an option or you can edit your photos in programs on your computer. If you use a photographer instruct him or her to use a 4:3 ratio.*

*For the NWCraft21 exhibition, if you are unable to successfully change your **priorly** photoed works to a 4:3 ratio following the instructions provided on the NWDC members only section of the website, please go ahead and submit your images as you have them-- ensuring that the file size of 5 mb or less.*

## Allied Arts Association Juror Panel

### Marlene Kingman

- Allied Arts Association Featured Artist Chair
- Educated in Fine Arts, Commercial Design and Architecture
- Studied under multiple plein air and studio art instructors
- Experience in multiple Annual Open Studio Tours, ArtWalks and Pop-Ups

### Judith Loomis

- Allied Arts Association Historian and prior President Board of Directors
- Bachelor of Arts in French and Art
- Board member since 1992 with responsibilities in sales, exhibition planning and installation, coordination of meetings and events

### Rose Quirk

- Allied Arts Association Gallery Display Chair
  - Practicing ceramic artist
  - Educated as biochemist
  - Allied Arts Association board member since 2005
- 

## Tip Toland: Empathy In Clay

Bellevue Arts Museum

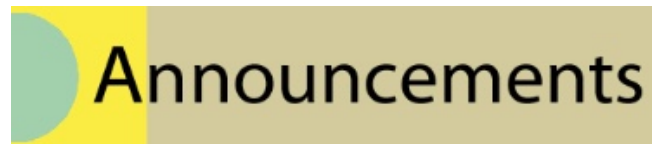
July 23, 2021 — January 2, 2022

Co-Sponsored with NWDC

Plan your visit: [Http://www.bellevuearts.org](http://www.bellevuearts.org)



---



## Announcements

**NWDC Russell and Majorie Day Invited Lecture Series: Sequoia Miller Chief Curator and Deputy Director of the Gardiner Museum of Ceramic Art in Toronto and Former NWDC Ceramic Artist Member**

Bellevue Arts Museum

**Sunday, October 31st 2 PM ( Subject to change to ZOOM talk depending upon pandemic protocols)**

RSVP to Bellevue Arts Museum to come



---

**“Playing with Mud and Fire”**

NWDC Zoom Artist Talk with Ken Turner

September 12, 3:00 – 4:15 PM



**Equinox**

To quote the American singer-songwriter David Byrne, "Well how did I get here"! Ken Turner reflects on his past and embraces the present in his Artist Talk - Playing with Mud and Fire.

No RSVP is needed for this talk, please join us using the Zoom link below:

Ken Turner Artist Talk Zoom Meeting

Sep 12, 2021 03:00 PM Pacific Time (US and Canada)

Join Zoom Meeting

<https://us02web.zoom.us/j/81859447679?pwd=Mm5xOTV3aEtWQzN6WnFHSovVHQ0dz09>

Meeting ID: 818 5944 7679

Passcode: 796207

One tap mobile

+12532158782,,81859447679#,,,,\*796207# US (Tacoma)

+16699006833,,81859447679#,,,,\*796207# US (San Jose)

Dial by your location

+1 253 215 8782 US (Tacoma)

+1 669 900 6833 US (San Jose)

+1 346 248 7799 US (Houston)

+1 312 626 6799 US (Chicago)

+1 929 436 2866 US (New York)

+1 301 715 8592 US (Washington DC)

Meeting ID: 818 5944 7679

Passcode: 796207

Find your local number: <https://us02web.zoom.us/j/81859447679>

Photographer: Ken Turner

---

## Calendar of Events

**September 12, 2021 - Ken Turner, Ceramics Zoom Artist Talk**

**NWCraft21 Exhibition November 8th 2021 — January 3rd 2022**

**Sequoia Miller, PhD BAM Lecture October 31 2021**

**Kristi Kun Zoom Artist Talk January, 2022.**

**Lanny Bergner Zoom Artist Talk March, 2022**

**Lynn DiNino Zoom Artist Talk June, 2022**

---



***NWDC Member Application Period Open Through October 15***

***Do you know a fine craft artist to invite to join NWDC? See the qualifications below and please encourage them to apply.***

***The application is available at the NWDC website: <https://www.nwdesignercraftsmen.org/apply-for-membership>***

### ***All Fine Craft Artists Are Welcome to Apply--Qualifications:***

- Be a fine craft artist demonstrating advanced skill working in clay, wood, glass, metal, fiber, mixed media or some combination of these media.
- Present a strong and consistent body of original work completed in the last 3 years, represented by 10 professional-quality images.
- Submit a list demonstrating your participation over the last five years in: regional and/or national galleries, and invitational or juried exhibitions at both the regional and national or international levels.



**Winged Hive**

2019

stainless steel mesh mounted on painted board

18 x 49 x 1.75 in.

Lanny Berger

My piece “Winged Hive” won the Philip McCracken Memorial Award at the Anacortes Arts Festival, Arts at the Port Exhibition. It was such an honor to have been selected by Peregrine O’Gormley for the award. What folks might not know is that I had the privilege of being Phil’s studio assistant for five months back in 1976. It is hard to believe it has been 45 years since that apprenticeship. I probably learned more during those five months working for him than I did in all of my later BFA and MFA college art classes. I will always be grateful for that. Phil passed away this year – his kindness, wisdom, meticulous attention to craft and his search for the spirit behind the art will be what I remember about artist Phillip McCracken.





Seeking Nature's Balance, 2021  
stainless steel & copper mesh, copper wire, glass frit  
22 x 22 x 4.5  
Lanny Bergner

Lanny Bergner will be having a solo exhibition at i.e gallery, Edison, WA. <https://www.ieedison.com/>

Wings & Leaves opens September 3 and closes on September 26, 2021  
Artist reception: Saturday, September 4, 3:00 - 5:00 pm  
Artist talk: Saturday, September 18 at 4 pm at etcetera (a block from the gallery)

---

### **HGA Small Expressions 2021 Exhibition**

The Handweavers Guild of America (HGA) announced its 2021 annual juried exhibit of small works. "Small Expressions 2021". Featuring 36 contemporary small-scale art works by artists from 21 states and 2 countries. *Small Expressions* opened in July 2021 at the Pacific Northwest Quilt & Fiber Arts Museum in La Conner WA and then will tour museums and galleries in the United States through June 2022. The show's juror was Madelyn van der Hoogt, a professional fiber artist and teacher over 50 years.

NWDC members Danielle Bodine, Dorothy McGuinness and Barbara J. Walker have artwork in the show.



Spring Flight  
15x5x6"  
Mixed Media - Mulberry and recycled papers, waxed linen, wire, stamped tissue paper  
Danielle Bodine



Chocolate Mint

6" x 7" x 7"

watercolor paper, acrylic paint, polyester thread

Dorothy Mc Guinness



Le Treillis

Ply-splitting

Artist-made 4-ply linen cords

7.25"H x 6"W x 6"D

Barbara J. Walker

---



Barbara J. Walker's mixed media piece, *Sheltering in Place*, was selected for Vol. 2 of Dab Art's "Art in the Time of Corona: A Global Art Project" [ART IN THE TIME OF CORONA™ | Vol. 2 | Artsy](#).

*Sheltering in Place*:  
8 ¾" H x 13"W x 13"D

Techniques: ply-splitting, papier-mâché, needle felting, knotting, cross-knit looping, wire twisting, wrapping, stitching

Materials: artist-made 4-ply cotton cords, brown paper grocery bags, salvaged metal basket, hardware cloth, beverage can strips, wire, washers, buttons, various oddments

Please let me know you've received this – I've recently had some email problems. Thanks!

Barbara

*Barbara J. Walker*

*Fiber Artist, Author*

*Master Weaver*

<https://www.barbarajwalker.com>

*Earth without Art is just "Eh"*

*(source unknown)*

---



### **West Side Artists Studio Tour Sept. 25 & 26**

NWDC Members Jan Koutsky, Loren Lukens, Kelly Lyles, Deb Schwartzkopf and Ken Turner are showing their work in the West Side Artists Studio Tour September 25 & 26. Nine studios are on the tour. There are multiple artist at each stop. Come make a day of touring studios, seeing art, and connecting with friends. This year's event is mostly outdoors to keep compliant with COVID restrictions. A map to the studios and all the information is available at the web

site: <https://www.westsidartists.org/>

---

**Barbara Matthews** was the featured artist for Create Whimsy  
see <https://createwhimsy.com/projects/spotlight-barbara-matthews-fiber-artist/>

---



**Naoko Morisawa**

Receives **Eve Deisher Creative Excellence Award**

Anacortes Art Fair 2021

<https://anacortesartsfestival.com/festival-activities/arts-at-the-port/juried-art/>

---



**Tanka**

Small sculptural weave, made with corn husk fiber.

10x10x10

Tieton, Tieton, WA.

August 7-October 10

Gabi Nirino



**Chunche**

Won 2nd prize in 3D category.

Small sculptural weave, made with corn husk fiber.  
Edmonds Art Festival, Edmonds, WA. August 27-29  
Gabi Nirino



### How to Make Your Own Sanctuary

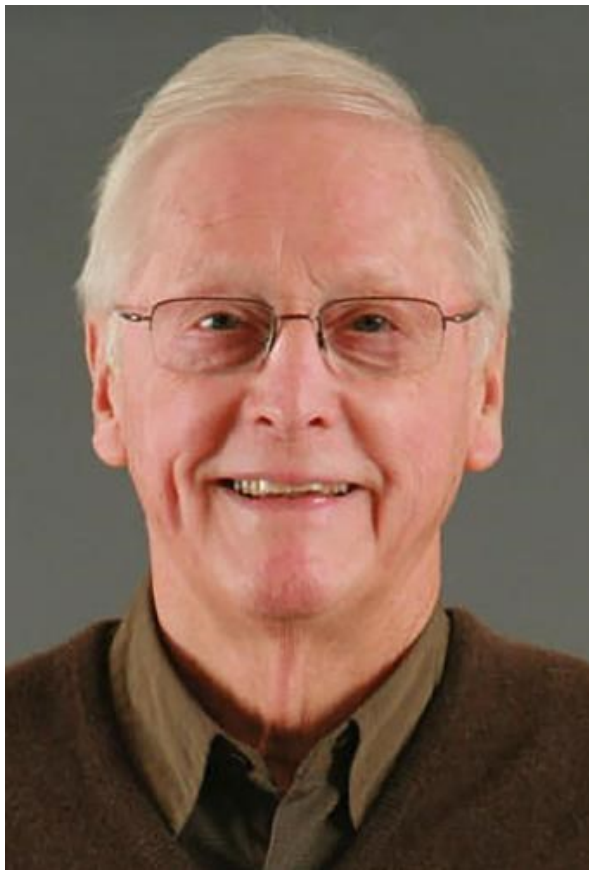
10 wood pieces based on the argentine popular devotion of Gauchito Gil.  
Shifting Tides, 14th Juried Art Exhibition. Columbia City Gallery, Seattle, WA.  
August 11-September 19  
Gabi Nirino



### Small Objects to Sow in a New World

Installation of 22 pieces created with corn husk fiber.  
Earth Matters. Watermark Art Center, Bemidji, Minnesota.  
September 3-October 30





### **Robert “Bob” Anderson 1929 - 2021**

We were saddened to hear of the passing Bob Anderson, long time NWDC advocate and loving husband of NWDC member Dona Anderson.

Memorial services are scheduled in Everett for September 11th 2021

See the link below to the Everett Herald Obituary for more information and to read about Bob’s important role in arts advocacy in our region.

<https://www.legacy.com/us/obituaries/heraldnet/name/robert-anderson-obituary?pid=199471479>

---

**Anne Praczukowski** — Long time NWDC member and renowned metal smith and reposes’ master passed this summer.

# ANNE PRACZUKOWSKI



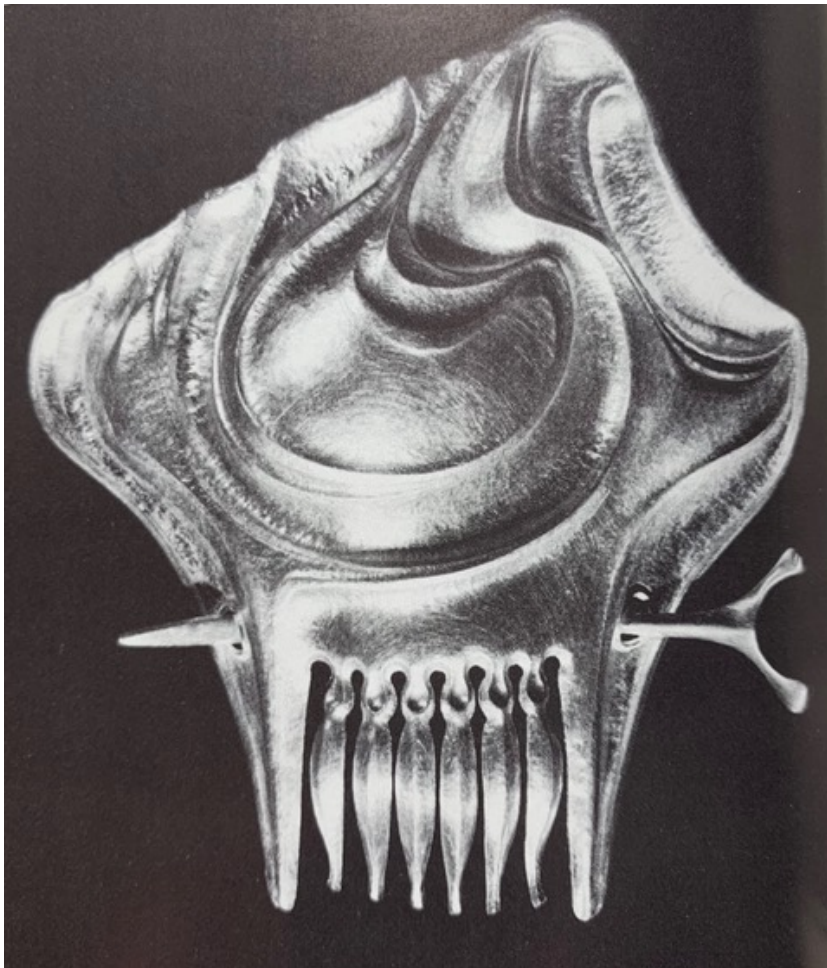
## Education:

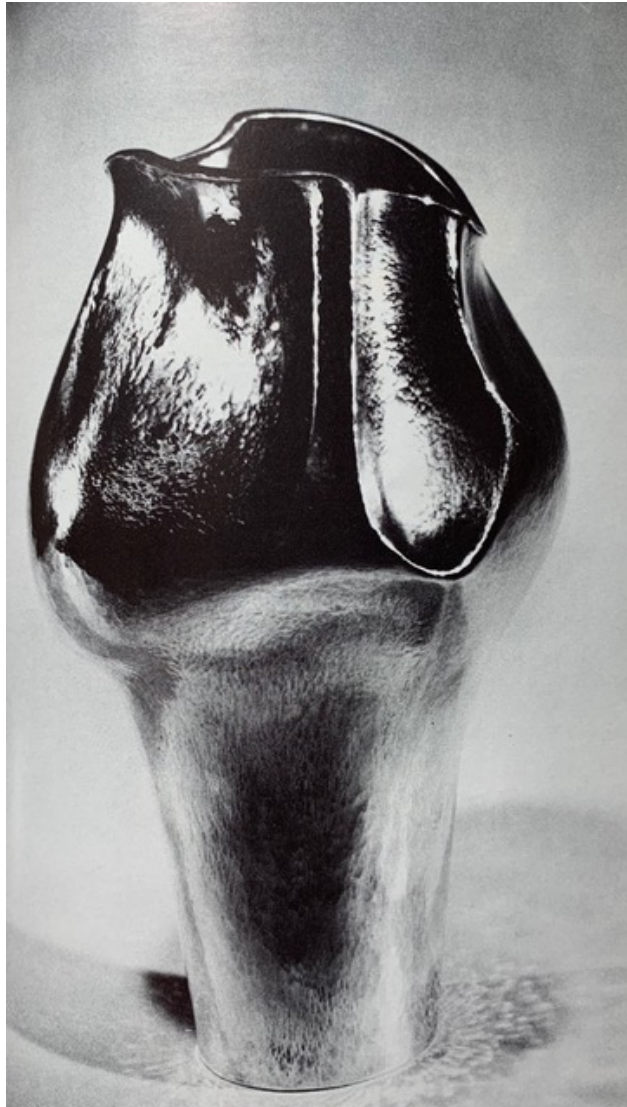
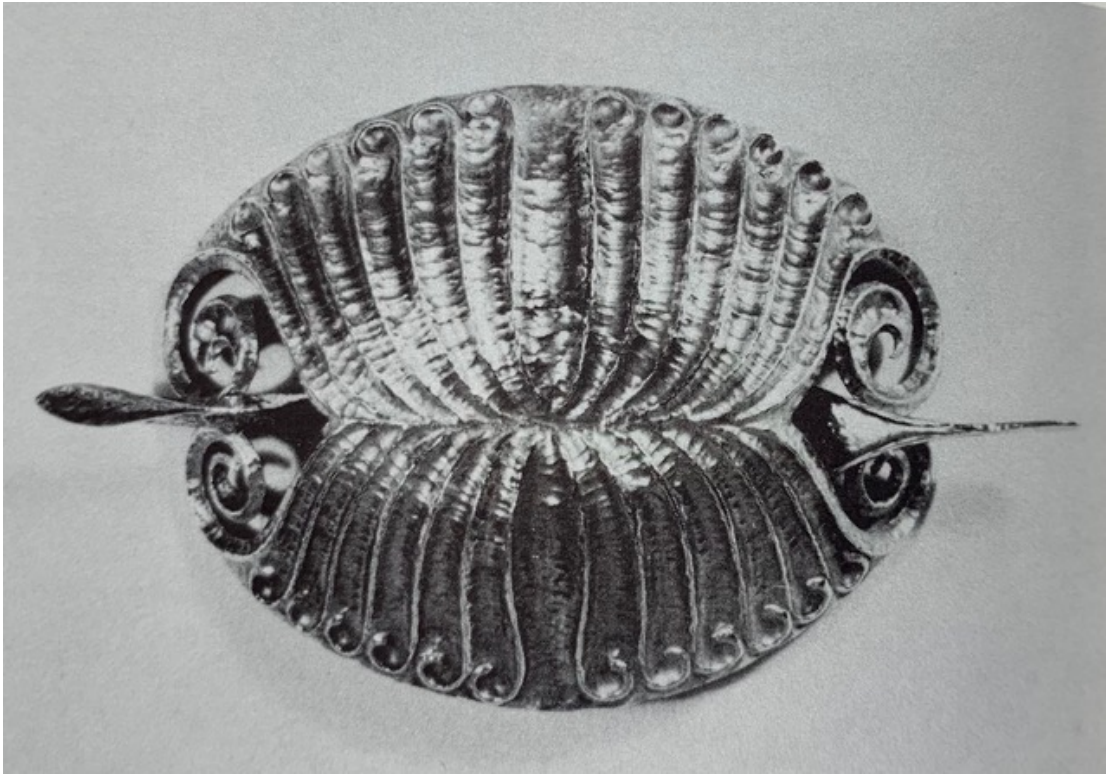
Massachusetts College of Art - Boston - B.S.  
Museum School of Fine Arts -  
University of Washington - Seattle - MFA

## Faculty:

Cornish School of Allied Arts - Seattle.

Exhibited regionally and nationally since  
1959.





---

---

# Member Links

[NWDC Board of Directors](#)

[Living Treasures Videos, Information and Donation Form](#)

## MEMBERS:

[MEMBERS ONLY](#) portion of the NWDC website

PASSWORD: Your personal ID and password

[Members Directory](#)

[Log-in to your Member Profile](#)

You can edit your information on the website, change images, pay dues

## FACEBOOK:

### **[NWDC Facebook Public Page:](#)**

Send short, focused content, links and photos to Barbara De Pirro.

### **[NWDC Facebook Members Group Page:](#)**

This page is set-up so that each member can post directly themselves. An excellent way to reach out to members about exhibitions, workshops, call to artists, resources, questions, etc.

## INSTAGRAM:

[NWDC Instagram:](#)

Send short, focused content, links and photos to Barbara De Pirro.



[NWDC Website](#) [NWDC Page](#) [NWDC Members Group](#) [Instagram](#)

---

Copyright © 2021 Northwest Designer Craftsmen, All rights reserved.

Want to change how you receive these emails?  
You can [update your preferences](#) or [unsubscribe from this list](#).

